

## Baildon Ward Profile Supplement

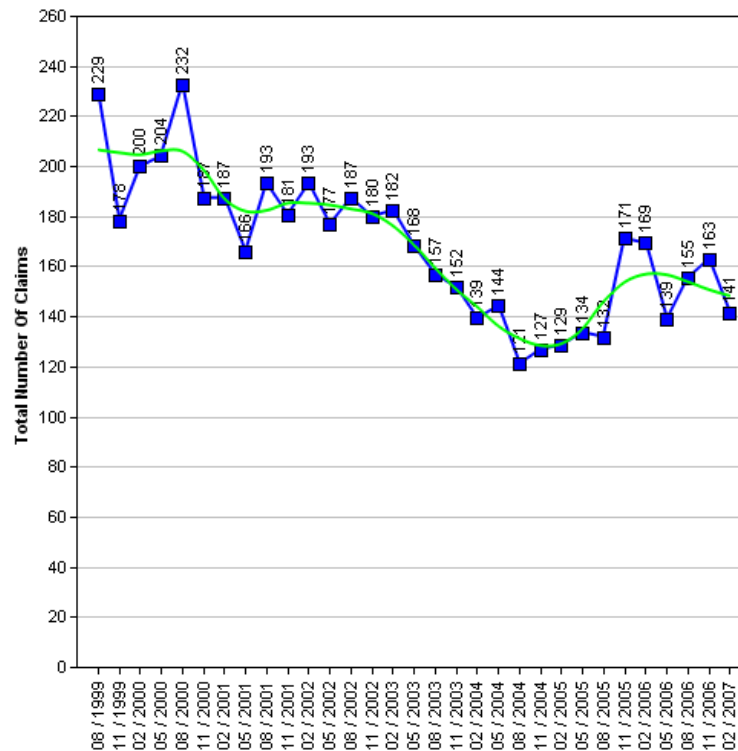
The Census is a survey of all people and households in the country that takes place every 10 years. The Census was last carried out in 2001, with results published in 2003. The next Census is due in 2010, with results expected in 2013. Consequently the actual data cannot be updated in intervening years.

Work has been underway for some time to produce a range of alternative datasets for Bradford to supplement the 2001 Census data with more current and relevant information, which will better describe conditions and progress across the District. This supplement provides a taster of that work.

It is the intention to consult Elected Members on themes and priorities. Regular data updates will then be incorporated into the intranet 'Members Information System' supported by improved analysis and narrative. Periodic snapshots in paper document form will continue to be available.

### Job Seekers Allowance

The 1991 to 2006 Job Seekers Allowance data give an insight into the number of claimants under pensionable age who are available for, and actively seeking work of at least 40 hours a week.



### Job Seekers Allowance Claimants

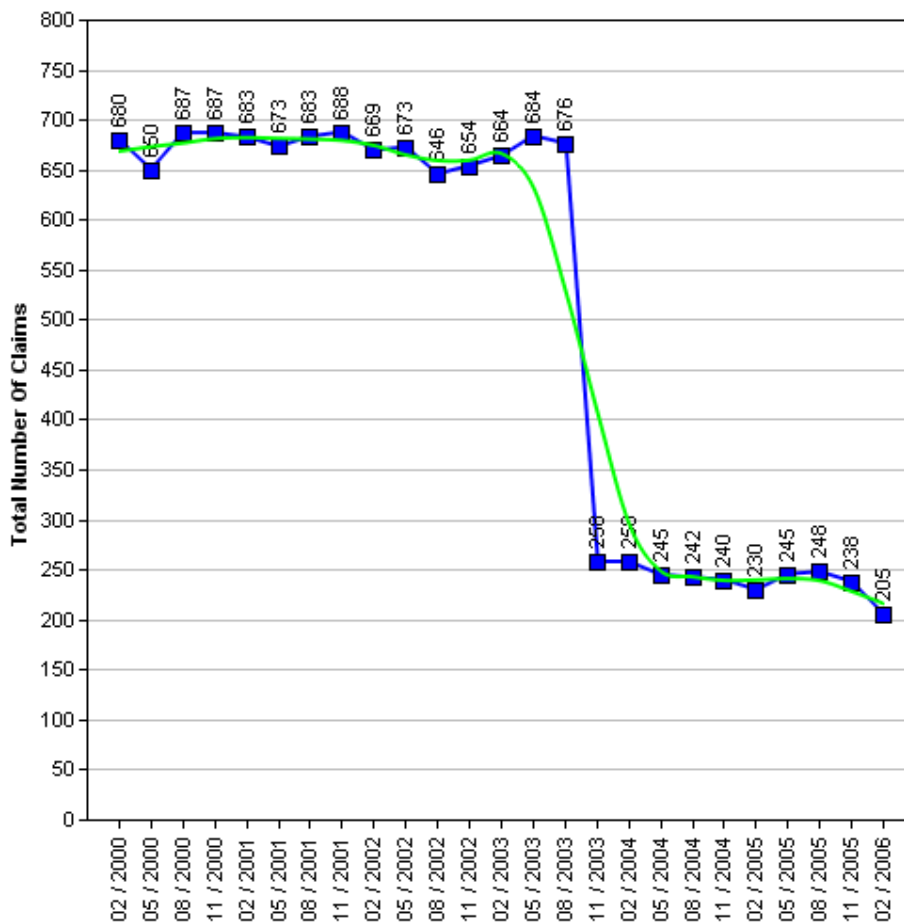
	1999	2000	2001	2002	2003	2004	2005	2006	2007
Quarter 1 (February)	-	200	187	193	182	139	129	169	141
Quarter 2 (May)	-	204	166	177	168	144	134	139	-
Quarter 3 (August)	229	232	193	187	157	121	132	155	-
Quarter 4 (November)	178	187	181	180	152	127	171	163	-



## Income Support

The 2000 to 2006 Income Support data give an insight into the number of claimants between the age of 16-59 who have a low income, don't have savings of £16,000 or more, are not working, work on average less than 16 hours a week, or are unable to work because they are:

- A Lone parent
- Registered sick or disabled
- A student and either a lone parent or disabled
- Or caring for someone who is sick or elderly



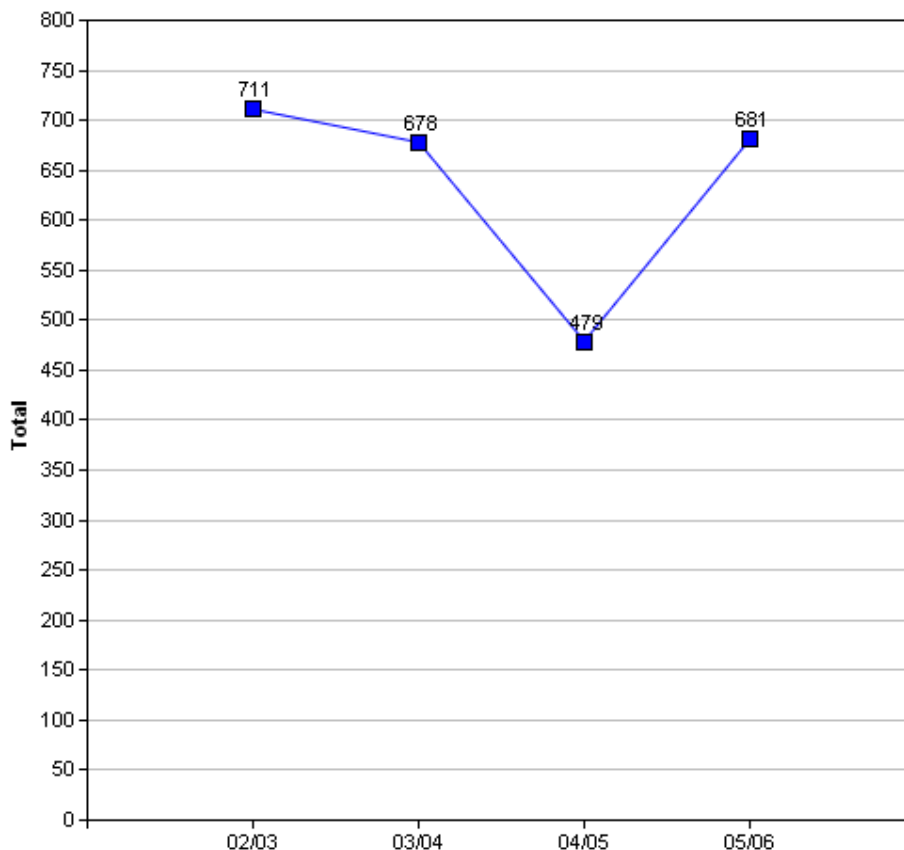
**WARNING:** In the Income Support table there is a drop in the number of claimants between the months of August 2003 and November 2003. The explanation for this is because "from October 2003, Income Support for pensioners was replaced by 'Pension Credit'." (Source: [www.mind.org.uk](http://www.mind.org.uk)).

### Income Support Claimants

	2000	2001	2002	2003	2004	2005	2006
Quarter 1 (February)	680	683	669	664	258	230	205
Quarter 2 (May)	650	673	673	684	245	245	-
Quarter 3 (August)	687	683	646	676	242	248	-
Quarter 4 (November)	687	688	654	258	240	238	-

## Crime

The Crime data is based on the Crime Domain from the Indices of Deprivation 2004. The Crime Domain consists of 33 categories of recorded crime which are then grouped to form 4 composite indicators: burglary, criminal damage, theft and violence. This report gives an insight into the number of offences committed within the selected area and compares this with the Bradford district. The data is displayed for each year by composite indicator.

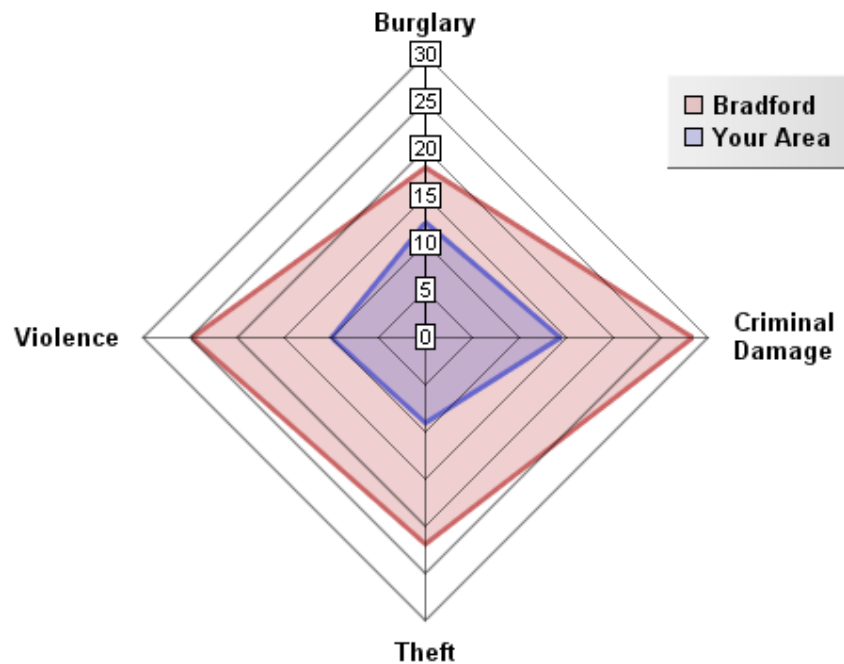


### Overall Crimes per Year

Year	Selected Area			Bradford District		
	No.Offences	Change	% Change	No.Offences	Change	% Change
2002/03	711			49,264		
2003/04	678	-33	-4.6%	48,973	-291	-0.6%
2004/05	479	-199	-29.4%	40,747	-8,226	-16.8%
2005/06	681	+202	+42.2%	43,562	+2,815	+6.9%

The pattern of crime in the Baildon Ward has broadly followed a similar trend to the district. In 2004/05 numerous district wide initiatives from West Yorkshire Police and the District Crime and Disorder Reduction Partnership yielded significant reductions in crime across most categories. This was an exceptional year for crime reduction and such significant reductions have proven to be unsustainable in the following years. There has still been a 4.2% decrease in crime between 2002 and 2006. It is important to note that ID2004 Crime Domain definition of crime is limited to a subset of crime. A more accurate picture can be obtained by looking at Overall Crime Levels in the district.

## 05/06 Comparison with District (Rate per 1000 population)

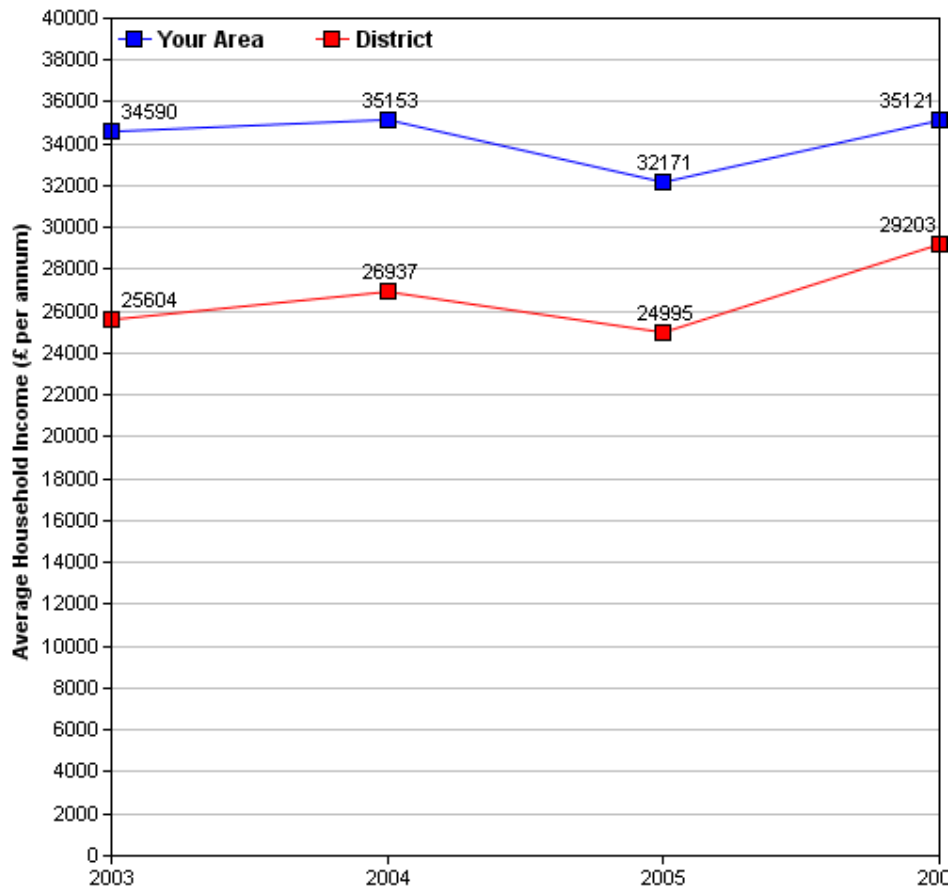


The above crime radar graph compares four variables of crime, per thousand population for your area, with that of the Bradford district. The pink line indicates the Bradford District rate per thousand population and the blue line represents the per thousand population rate for your area. The radar graph allows us to see that all four crime variables in your area are well below those of the district average. The radar graph also allows you to see which crime variables are closer or further from the district rate, by comparing the gap between the blue and pink lines. Burglary (12.5 per thousand population) for your area is well below the district rate (17.5 per thousand population). Burglary is closer to the district average, as the gap between the pink and blue lines are shortest for this variable, when compared to the other crime variables for your area. The gaps between the district rate and your area are longer for Violence, Criminal Damage and theft. This indicates that these crime rate variables are less frequent in your area compared to the district rate.

## Income

Information relating to income is derived from data supplied by CACI called 'PayCheck', which provides estimates of mean household income for every postcode in the UK. Unfortunately, it is not possible to use PayCheck data to examine changes in income over time, due to changes in data collection methods. However, it is possible to compare figures from different geographic areas (i.e. Ward and District) for the same time period, as they are derived using the same data collection method.

(For more information on PayCheck data please see [www.caci.co.uk](http://www.caci.co.uk).)



### Overall Income by Year

	2003	2004	2005	2006
Mean per Annum	£34,590.42	£35,153.29	£32,171.13	£35,121.17
Mean per Annum (District)	£25,604.05	£26,936.70	£24,995.30	£29,203.12

## Ethnic Diversity

This data comes from the 1991 and 2001 Censuses and shows the diversity of ethnic groups within the Bradford District. By comparing the 1991 Census with the 2001 Census we are able to compare the area over time. At both the 1991 (99.1%) and 2001 (97.9%) Census the Baildon ward was almost completely White.

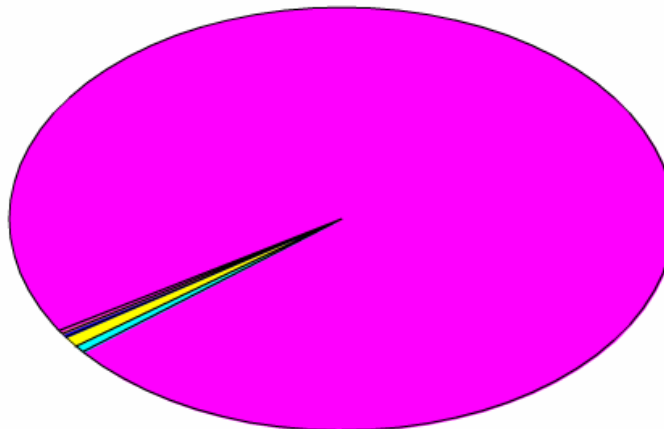
### Ethnic Diversity 1991

	Number	Percentage
White	14,749	99.1 %
Asian	56	0.4 %
Black	26	0.2 %
Other	45	0.3 %

### Ethnic Diversity 2001

	Number	Percentage
White	14,638	97.9 %
Mixed	117	0.8 %
Asian	142	0.9 %
Black	15	0.1 %
Other	33	0.2 %

■ Bangladeshi	0(0%)
■ Black or Black British	15(0%)
■ Indian	59(0%)
■ Mixed(1)	117(1%)
■ Pakistani	81(1%)
■ White	14,637(98%)
■ Other ethnic group	32(0%)



## Travel to Work (Census 2001)

This data comes from the 2001 Census. It has details about the people who travel to and from the area to go to work, and their method of getting there.

### Travel from Baildon

#### Totals

Total People travelling from Area	Distance Travelled (in Km)					
	Average (mean)	Maximum	Standard Deviation	Standard Deviation (of the population)	Variance	Variance (of the population)
7,473	11	394	40	40	1,591,790	1,591,698
<b>Method of travel to work</b>						
Works mainly at or from home	Public Transport			Bicycle	On Foot	Other
	Train	Bus etc	Taxi			
686	408	405	28	42	556	27
<b>By Car</b>				<b>Motorcycle etc</b>		
<b>As driver</b>		<b>As passenger</b>				
4,830		426		54		

#### By Local Authority

Destination Local Authority	Total People travelling from Area	Distance Travelled (in Km)	
		Average (mean)	Maximum
Bradford	5,562	4	15
Leeds	1,201	12	31
Kirklees	117	18	30
Calderdale	107	16	24
Wakefield	87	28	43
Harrogate	63	23	39
Craven	50	21	35
York	27	47	51
Sheffield	18	55	56
Pendle	15	27	29
Hillingdon	12	278	279
Barnsley	9	36	39
Angus	8	N/A	N/A
City of London	6	283	284
Manchester	6	50	52

## Travel to Baildon

### Totals

Total People travelling to Area	Distance Travelled (in Km)					
	Average (mean)	Maximum	Standard Deviation	Standard Deviation (of the population)	Variance	Variance (of the population)
4,572	6	191	15	15	227,173	227,160
<b>Method of travel to work</b>						
Works mainly at or from home	Public Transport			Bicycle	On Foot	Other
	Train	Bus etc	Taxi			
686	45	250	12	39	488	12
<b>By Car</b>				<b>Motorcycle etc</b>		
<b>As driver</b>		<b>As passenger</b>				
2,671		309		59		

### By Local Authority

Origin Local Authority	Total People travelling from Area	Distance Travelled (in Km)	
		Average (mean)	Maximum
Bradford	3,781	3	16
Leeds	463	10	27
Calderdale	90	16	25
Kirklees	55	20	27
Harrogate	50	22	33
Craven	28	19	30
Wakefield	21	28	31
Hambleton	6	51	57
Middlesbrough	6	86	89
York	6	45	46
Pendle	6	27	27
Burnley	3	34	34
Blyth Valley	3	140	140
Halton	3	86	86
Manchester	3	56	56

Of the people who travel to work from Baildon, over 70.3% travel by car (64.6% as drivers and 5.7% as passengers), 7.2% by motorcycle and 0.2% travel by other means (including train, buses, taxis, bicycle, on foot and other modes). The remaining 9.2% work predominantly from home.

Over 39% more people travel from Baildon than those that travel to Baildon.

Of the people who travel to work in Baildon, over 65.1% travel by car (58.4% as drivers and 6.8% as passengers), 1.3% by motorcycle and 18.5% travel by other means (including train, buses, taxis, bicycle, on foot and other modes). The remaining 15% work predominantly from home.

## Indices of Deprivation 2004 (ID2004)

The Index of Multiple Deprivation 2004 (IMD 2004) is a Super Output Area (SOA) level measure of multiple deprivation. England is divided into 32,482 SOAs, which are small areas containing an average of 1,500 residents. The IMD 2004 project gives a score and rank to each SOA for seven areas of deprivation:

- Income deprivation
- Employment deprivation
- Health deprivation and disability
- Education, skills and training deprivation
- Barriers to Housing and Services
- Living environment deprivation
- Crime

Also, each SOA has been given an overall score and rank which takes into account all seven indices, and this is known as the Index of Multiple Deprivation 2004.

Ranks vary from 1 to 32,482, with 1 being the most deprived. Higher scores indicate that areas are more deprived. When comparing the deprivation of different areas, it is better to look at the rank than the score. Bradford Council has been able to use the Maps and Stats web-based GIS system ([www.mapsandstats.com](http://www.mapsandstats.com)) to combine scores for the SOAs that fall within the wards, and hence estimate the Indices of Deprivation at ward level.

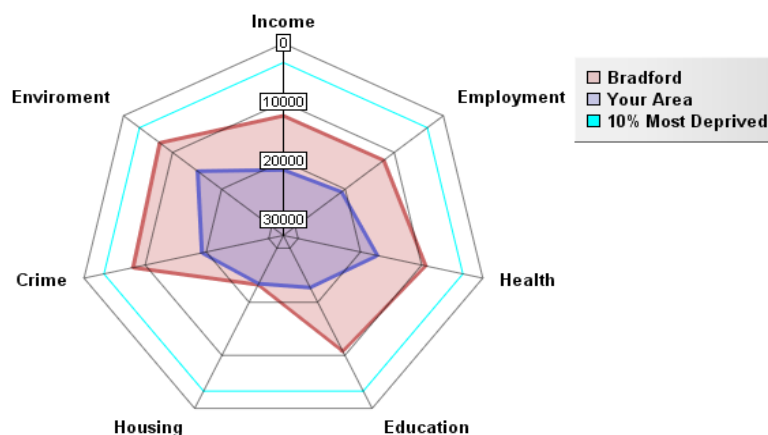
### Index of Multiple Deprivation 2004

	ID 2004 Overall Rank (Average)	ID 2004 Overall Score
E01005361 in Oldham LA	22408	11.2
<b>Baildon Ward</b>	<b>22408.18</b>	<b>12.38</b>
E01020557 in Weymouth and Portland LA	22409	11.2
<b>Average for the Bradford District</b>	<b>10656.03</b>	<b>32.93</b>

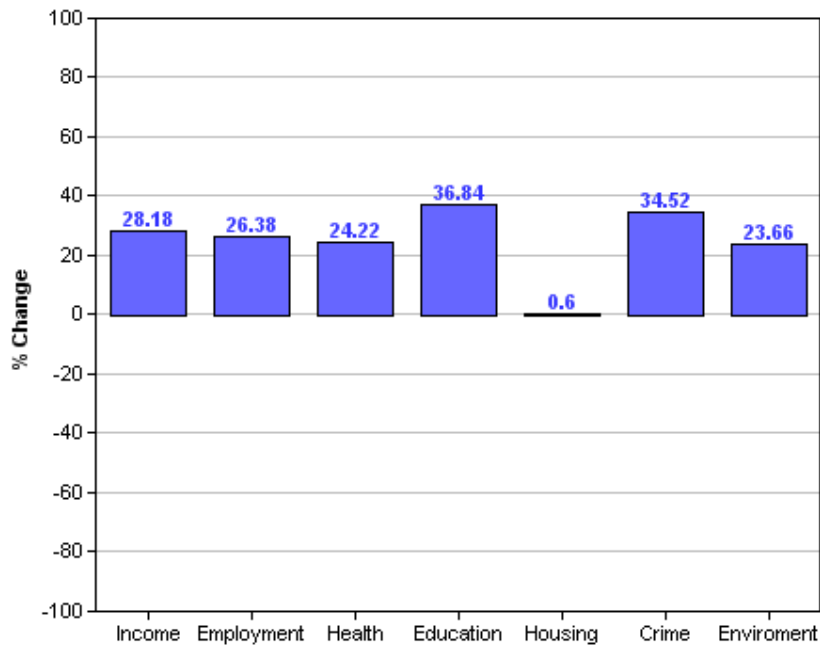
This table shows the average ranks and scores for the Baildon ward. The rows above and below Baildon show which SOAs in England have the most similar ranks to this ward, and are therefore considered to have the most similar levels of deprivation. It is important to note, however, that these areas may be deprived for different reasons.

### Area Rank against Average Bradford Rank

The following radar graph and bar chart indicate that the Baildon ward is relatively less-deprived compared to the rest of the District on all domain indices of deprivation. Only in the Housing domain of the Index of Deprivation 2004 is Baildon at a similar level of deprivation to that of the Bradford District, although this is likely to reflect the low level of deprivation within Bradford for this domain. This is due mainly to the urban nature of Bradford, which means that there are amenities relatively close to where people live and is not necessarily due to a high standard of house stock. The difference between the Bradford District average and Baildon is greatest for both Education (36.8) and Crime (34.5) domains. This indicates that on Education and Crime Baildon is least deprived compared to the rest of the district. Overall Baildon has is reasonably balanced in terms of deprivation with only the Environment and Health being slightly higher than the rest of the deprivation domains for this area, these may of course be linked.



## Percentage Difference between Area Rank and Average Bradford Rank



### Other dataset currently being investigated/acquired

#### Health

Low birth weight  
 Death Rates  
 Smoking attributable health admissions  
 Perception Surveys (Speak-out)

#### Education

%5 A – C GCSE's (Inc. Maths and English)  
 Key Stage Results  
 Adult qualifications  
 Truancy

#### Economy

Benefit measures & Incapacity benefit  
 Income levels (Household)  
 NEET's  
 Business start-up survival rates

#### Crime

Criminal damage  
 Burglary  
 ASB (Needs clarifying)  
 Youth offending  
 Road traffic accidents (RTA)


#### Liveability

House prices  
 Void properties  
 Cleanliness  
 Open spaces  
 Housing condition

#### Stronger Communities

Voting rates

**Plus many other council datasets as they become available through the GIS strategy.**

	<p>All 30 Ward profiles and supplements can be found at:  <a href="http://www.bradfordinfo.com/census/WardProfiles.cfm">http://www.bradfordinfo.com/census/WardProfiles.cfm</a></p> <p>This bulletin was produced by the <b>Research and Consultation Service</b>,              City of Bradford Metropolitan District Council.              Email: <a href="mailto:stephen.elves@bradford.gov.uk">stephen.elves@bradford.gov.uk</a> Tel: 01274 43 7269              August 2007</p>
---	--