

Bingley Ward Profile Supplement

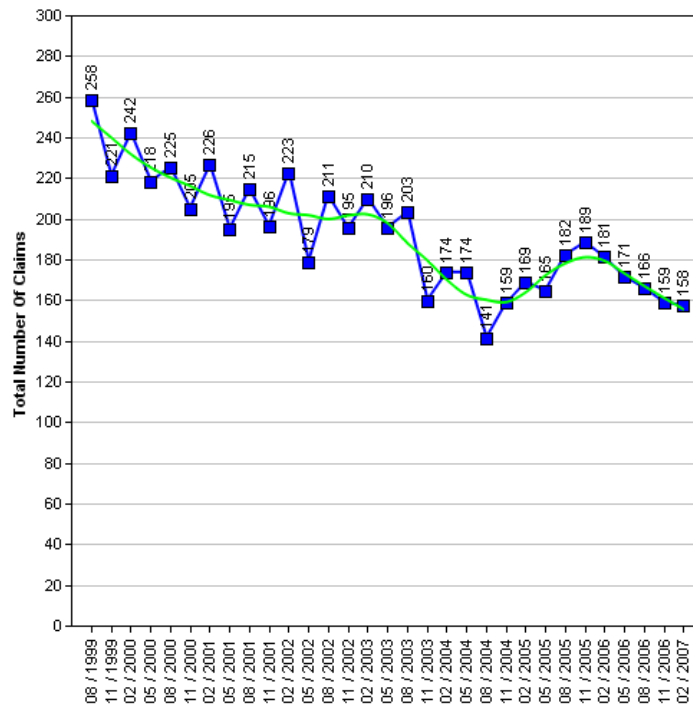
The Census is a survey of all people and households in the country that takes place every 10 years. The Census was last carried out in 2001, with results published in 2003. The next Census is due in 2010, with results expected in 2013. Consequently the actual data cannot be updated in intervening years.

Work has been underway for some time to produce a range of alternative datasets for Bradford to supplement the 2001 Census data with more current and relevant information, which will better describe conditions and progress across the District. This supplement provides a taster of that work.

It is the intention to consult Elected Members on themes and priorities. Regular data updates will then be incorporated into the intranet 'Members Information System' supported by improved analysis and narrative. Periodic snapshots in paper document form will continue to be available.

Job Seekers Allowance

The 1991 to 2006 Job Seekers Allowance data give an insight into the number of claimants under pensionable age who are available for, and actively seeking work of at least 40 hours a week.



Job Seekers Allowance Claimants

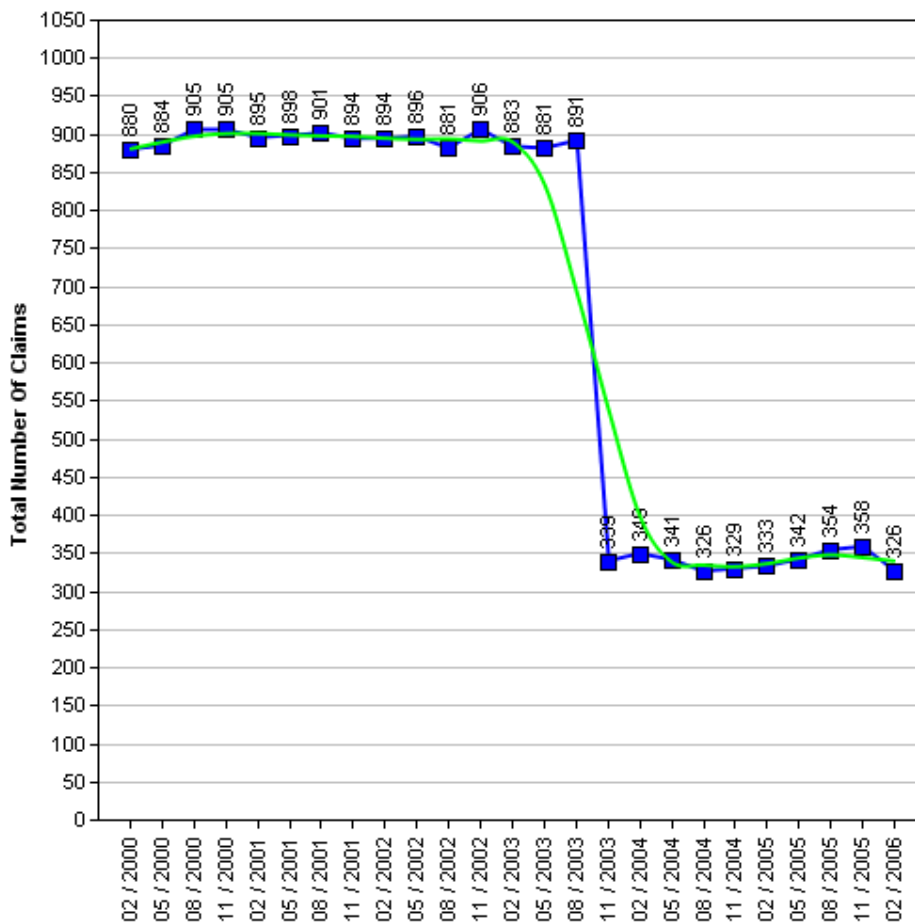
	1999	2000	2001	2002	2003	2004	2005	2006	2007
Quarter 1 (February)	-	242	226	223	210	174	169	181	158
Quarter 2 (May)	-	218	195	179	196	174	165	171	-
Quarter 3 (August)	258	225	215	211	203	141	182	166	-
Quarter 4 (November)	221	205	196	195	160	159	189	159	-



Income Support

The 2000 to 2006 Income Support data give an insight into the number of claimants between the age of 16-59 who have a low income, don't have savings of £16,000 or more, are not working, work on average less than 16 hours a week, or are unable to work because they are:

- A Lone parent
- Registered sick or disabled
- A student and either a lone parent or disabled
- Or caring for someone who is sick or elderly



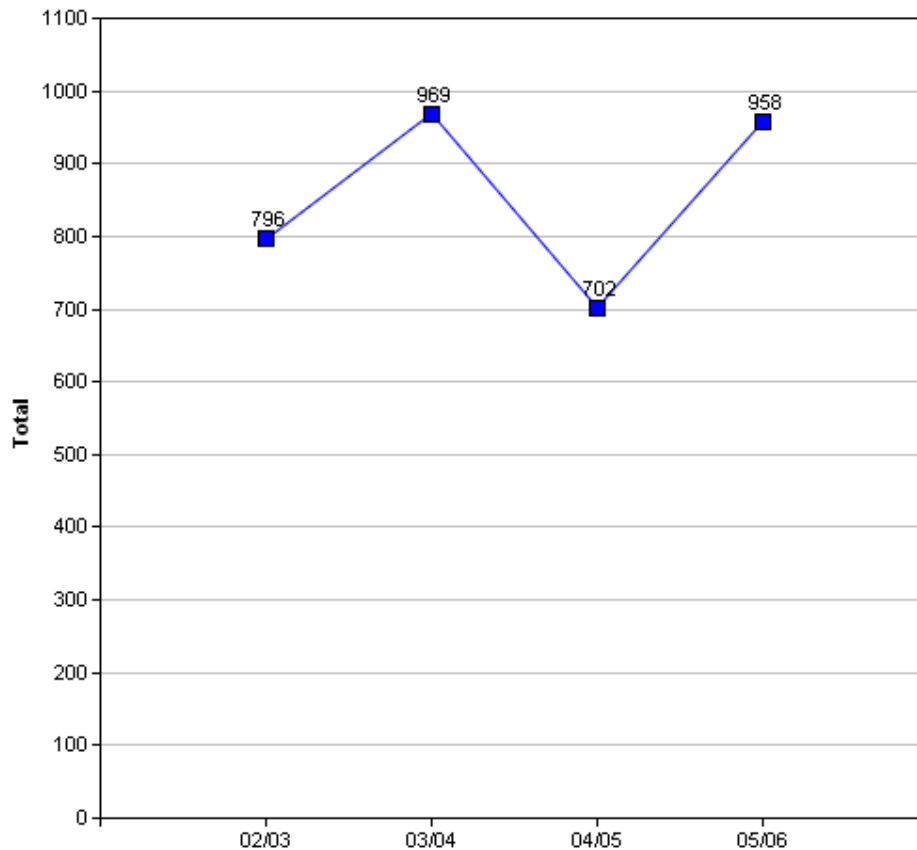
WARNING: In the Income Support table there is a drop in the number of claimants between the months of August 2003 and November 2003. The explanation for this is because "from October 2003, Income Support for pensioners was replaced by 'Pension Credit'" (Source: www.mind.org.uk).

Income Support Claimants

	2000	2001	2002	2003	2004	2005	2006
Quarter 1 (February)	-	895	894	883	349	333	326
Quarter 2 (May)	880	898	896	881	341	342	-
Quarter 3 (August)	884	901	881	891	326	354	-
Quarter 4 (November)	905	894	906	339	329	358	-

Crime

The Crime data is based on the Crime Domain from the Indices of Deprivation 2004. The Crime Domain consists of 33 categories of recorded crime which are then grouped to form 4 composite indicators: burglary, criminal damage, theft and violence. This report gives an insight into the number of offences committed within the selected area and compares this with the Bradford district. The data is displayed for each year by composite indicator.

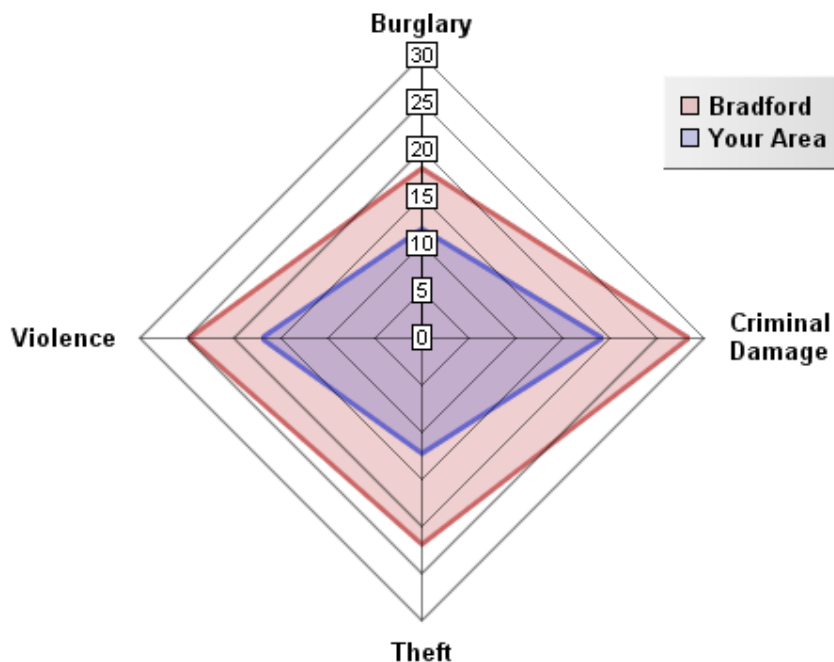


Overall Crimes per Year

Year	Selected Area			Bradford District		
	No.Offences	Change	% Change	No.Offences	Change	% Change
2002/03	796			49,264		
2003/04	969	+173	+21.7%	48,973	-291	-0.6%
2004/05	702	-267	-27.6%	40,747	-8,226	-16.8%
2005/06	958	256	36.5%	43,562	+2,815	+6.9%

The pattern of crime in the Bingley Ward has broadly followed a similar trend to the district. In 2004/05 numerous district wide initiatives from West Yorkshire Police and the District Crime and Disorder Reduction Partnership yielded significant reductions in crime across most categories. This was an exceptional year for crime reduction and such significant reductions have proven to be unsustainable in the following years. There has been a 20.3% increase in crime between 2002 and 2006. It is important to note that ID2004 Crime Domain definition of crime is limited to a subset of crime. A more accurate picture can be obtained by looking at Overall Crime Levels in the district.

05/06 Comparison with District (Rate per 1000 population)

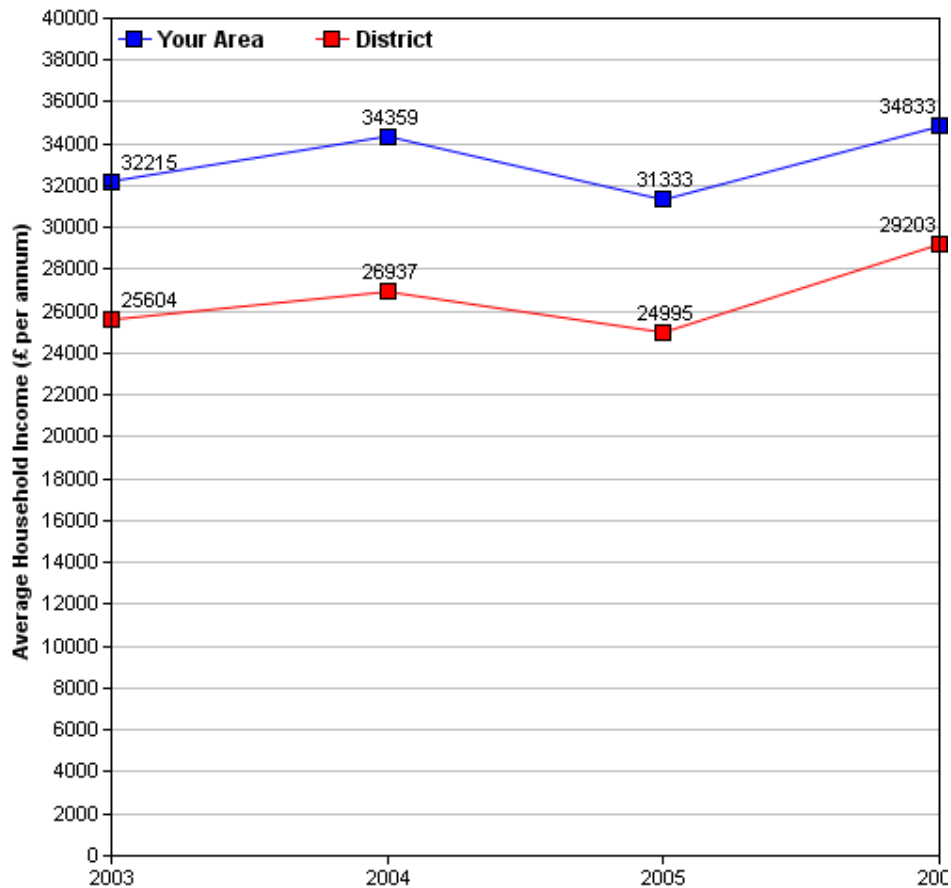


The above crime radar graph compares four variables of crime, per thousand population for your area, with that of the Bradford district. The pink line indicates the Bradford District rate per thousand population and the blue line represents the per thousand population rate for your area. The radar graph allows us to see that all four crime variables in your area are well below those of the district average. The radar graph also allows you to see which crime variables are closer or further from the district rate, by comparing the gap between the blue and pink lines. Burglary (10.5 per thousand population) for your area is well below the district rate (17.5 per thousand population). However burglary is still the closest crime variable to the district average, as the gap between the pink and blue lines are shortest for this variable, when compared to the other crime variables for your area. The gaps between the district rate and your area are longer for Theft and Criminal Damage. This radar graph indicates that these all four crime rate variables are less frequent in your area compared to the district average.

Income

Information relating to income is derived from data supplied by CACI called 'PayCheck', which provides estimates of mean household income for every postcode in the UK. Unfortunately, it is not possible to use PayCheck data to examine changes in income over time, due to changes in data collection methods. However, it is possible to compare figures from different geographic areas (i.e. Ward and District) for the same time period, as they are derived using the same data collection method.

(For more information on PayCheck data please see www.caci.co.uk.)



Overall Income by Year

	2003	2004	2005	2006
Mean per Annum	£32,215.00	£34,359.00	£31,333.00	£34,833.00
Mean per Annum (District)	£25,604.05	£26,936.70	£24,995.30	£29,203.12

The graph above clearly shows your ward has a considerably higher (approximately 16%) household income than the average of the district. This has been maintained between 2003 and 2006.

Ethnic Diversity

The data comes from the 1991 and 2001 Censuses and shows the diversity of ethnic groups within the Bradford District. By comparing the 1991 Census with the 2001 Census we are able to compare the area over time. Both the 1991 (99%) and 2001 (97.4%) Census indicates that the Bingley ward was almost completely White.

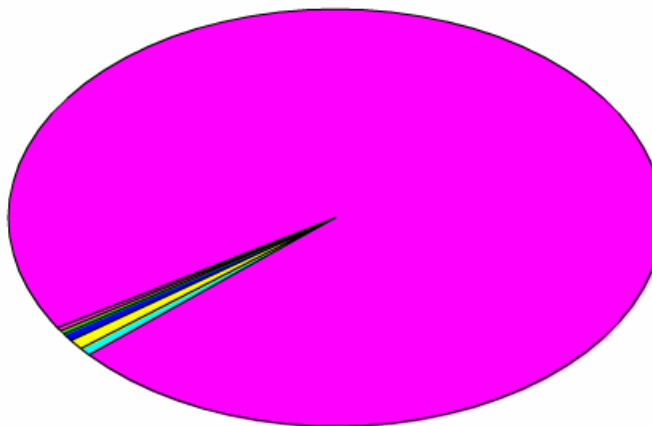
Ethnic Diversity 1991

	Number	Percentage
White	15,174	99%
Asian	44	0.3%
Black	41	0.3%
Other	76	0.5%

Ethnic Diversity 2001

	Number	Percentage
White	15,527	97.0%
Mixed	131	0.8%
Asian	175	1.1%
Black	52	0.3%
Other	64	0.4%

■ Bangladeshi	11(0%)
■ Black or Black British	51(0%)
■ Indian	78(0%)
■ Mixed(1)	130(1%)
■ Pakistani	84(1%)
■ White	15,526(97%)
■ Other ethnic group	63(0%)



Travel to Work (Census 2001)

This data comes from the 2001 Census. It has details about the people who travel to and from the area to go to work, and their method of getting there.

Travel from Bingley

Totals

Total People travelling from Area	Distance Travelled (in Km)					
	Average (mean)	Maximum	Standard Deviation	Standard Deviation (of the population)	Variance	Variance (of the population)
7,651	11	363	32	32	1,027,233	1,027,176
Method of travel to work						
Works mainly at or from home	Public Transport			Bicycle	On Foot	Other
	Train	Bus etc	Taxi			
666	537	519	36	57	715	21
By Car				Motorcycle etc		
As driver		As passenger				
4,591		462		36		

By Local Authority

Destination Local Authority	Total People travelling from Area	Distance Travelled (in Km)	
		Average (mean)	Maximum
Bradford	6,013	4	15
Leeds	892	17	33
Kirklees	196	15	26
Calderdale	126	16	24
Wakefield	108	20	25
Harrogate	48	30	40
Craven	22	29	42
York	21	23	27
Sheffield	12	50	51
Pendle	12	56	59
Hillingdon	9	269	270
Barnsley	9	57	58
Angus	9	287	287
City of London	6	46	47
Manchester	6	43	43

Travel to Bingley

Totals

Total People travelling to Area	Distance Travelled (in Km)					
	Average (mean)	Maximum	Standard Deviation	Standard Deviation (of the population)	Variance	Variance (of the population)
6,613	9	404	32	32	1,030,397	1,030,346
Method of travel to work						
Works mainly at or from home	Public Transport			Bicycle	On Foot	Other
	Train	Bus etc	Taxi			
666	328	570	30	51	726	21
By Car				Motorcycle etc		
As driver		As passenger				
3,710		458		47		

By Local Authority

Origin Local Authority	Total People travelling from Area	Distance Travelled (in Km)	
		Average (mean)	Maximum
Bradford	5,669	4	14
Leeds	280	16	33
Craven	179	16	46
Calderdale	105	15	23
Kirklees	92	20	32
Harrogate	58	24	28
Wakefield	29	34	41
Pendle	21	23	26
York	20	51	54
Bristol, City of	9	271	275
Barnsley	9	42	46
Rochdale	9	32	36
Berwick-upon-Tweed	8	210	211
East Riding of Yorkshire	6	70	73
Staffordshire Moorlands	6	94	102

Of the people who travel to work from Bingley, over 66% travel by car (60% as drivers and 6% as passengers), 4.7% by motorcycle and 0.3% travel by other means (including train, buses, taxis, bicycle, on foot and other modes). The remaining 8.7% work predominantly from home.

Over 14% more people travel from Bingley than those that travel to Bingley.

Of the people who travel to work in Bingley, over 63% travel by car (56.1% as drivers and 6.9% as passengers), 0.7% by motorcycle and 26.1% travel by other means (including train, buses, taxis, bicycle, on foot and other modes). The remaining 10.07% work predominantly from home.

Indices of Deprivation 2004 (ID2004)

The Index of Multiple Deprivation 2004 (IMD 2004) is a Super Output Area (SOA) level measure of multiple deprivation. England is divided into 32,482 SOAs, which are small areas containing an average of 1,500 residents. The IMD 2004 project gives a score and rank to each SOA for seven areas of deprivation:

- Income deprivation
- Employment deprivation
- Health deprivation and disability
- Education, skills and training deprivation
- Barriers to Housing and Services
- Living environment deprivation
- Crime

Also, each SOA has been given an overall score and rank which takes into account all seven indices, and this is known as the Index of Multiple Deprivation 2004.

Ranks vary from 1 to 32,482, with 1 being the most deprived. Higher scores indicate that areas are more deprived. When comparing the deprivation of different areas, it is better to look at the rank than the score. Bradford Council has been able to use the Maps and Stats web-based GIS system (www.mapsandstats.com) to combine scores for the SOAs that fall within the wards, and hence estimate the Indices of Deprivation at ward level.

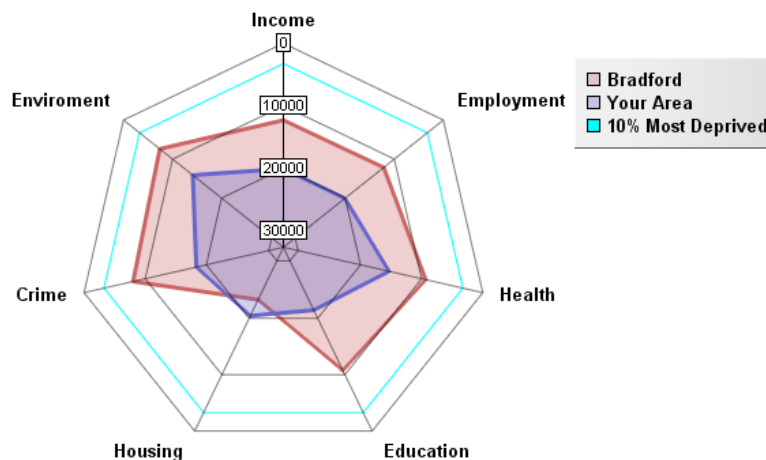
Index of Multiple Deprivation 2004

	ID 2004 Overall Rank (Average)	ID 2004 Overall Score
E01011353 in Leeds LA	20028	13.23
Bingley ward	22408.18	12.38
E01006384 in Wigan LA	20029	13.23
Average for Bradford	10656.03	32.93

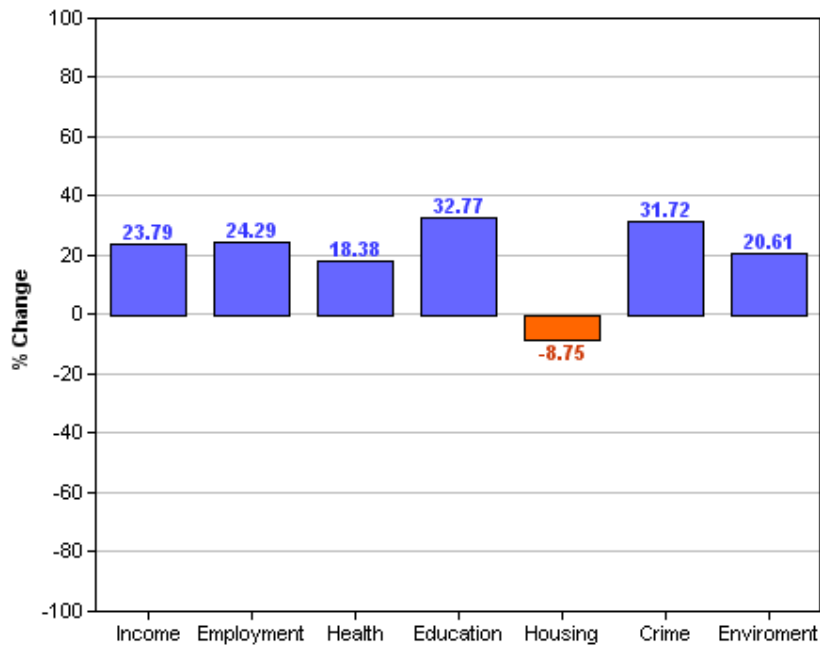
This table shows the average ranks and scores for the Bingley ward. The rows above and below Bingley show which SOAs in England have the most similar ranks to this ward, and are therefore considered to have the most similar levels of deprivation. It is important to note, however, that these areas may be deprived for different reasons.

Area Rank against Average Bradford

The following radar graph and bar chart indicate that your area is relatively less-deprived, compared to the rest of the Bradford District on all, but one, domain indices of deprivation. Only in the Housing domain of the Index of Deprivation 2004 is Bingley at a below district average. This could be a reflection of Bingley's more rural characteristic compared to other parts of the district. The difference between the Bradford District average and Bingley is greatest for both Education (32.7) and Crime (31.7) Index of Deprivation 2004 domains. This indicates that on Education and Crime Bingley is least deprived compared to the rest of the district. Overall, Bingley is reasonably balanced in terms of deprivation with only the Environment and Health being slightly higher than the rest of the deprivation domains for this area, these may of course be linked.



Percentage Difference between Area Rank and Average Bradford Rank



Other dataset currently being investigated/acquired

Health

Low birth weight
 Death Rates
 Smoking attributable health admissions
 Perception Surveys (Speak-out)

Education

%5 A – C GCSE's (Inc. Maths and English)
 Key Stage Results
 Adult qualifications
 Truancy

Economy

Benefit measures & Incapacity benefit
 Income levels (Household)
 NEET's
 Business start-up survival rates

Crime

Criminal damage
 Burglary
 ASB (Needs clarifying)
 Youth offending
 Road traffic accidents (RTA)

Liveability

House prices
 Void properties
 Cleanliness
 Open spaces
 Housing condition

Stronger Communities

Voting rates

Plus many other council datasets as they become available through the GIS strategy.



All 30 Ward profiles and supplements can be found at:
<http://www.bradfordinfo.com/census/WardProfiles.cfm>

This bulletin was produced by the **Research and Consultation Service**,

City of Bradford Metropolitan District Council.
 Email: stephen.elves@bradford.gov.uk Tel: 01274 43 7269
 August 2007