

Bowling and Barkerend Ward Profile Supplement

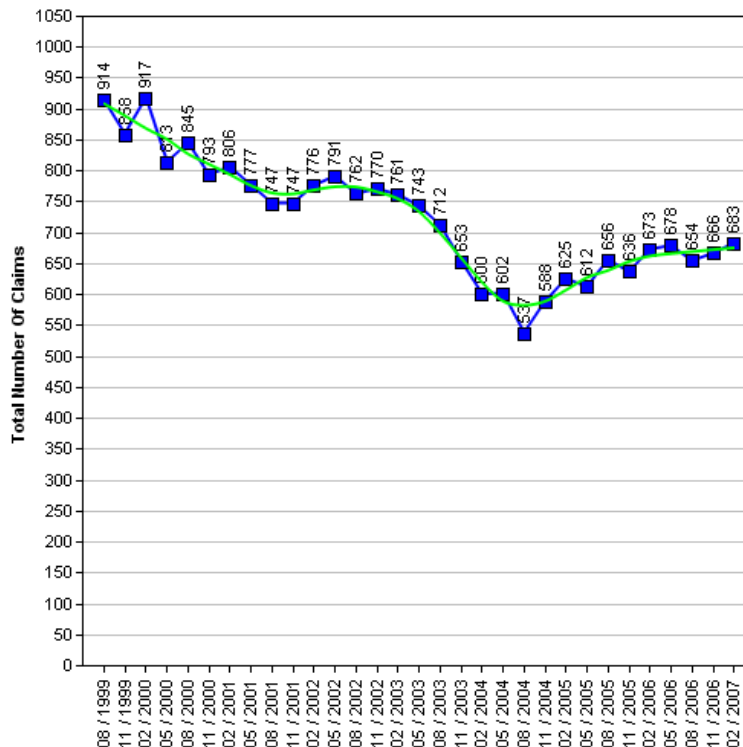
The Census is a survey of all people and households in the country that takes place every 10 years. The Census was last carried out in 2001, with results published in 2003. The next Census is due in 2010, with results expected in 2013. Consequently the actual data cannot be updated in intervening years.

Work has been underway for some time to produce a range of alternative datasets for Bradford to supplement the 2001 Census data with more current and relevant information, which will better describe conditions and progress across the District. This supplement provides a taster of that work.

It is the intention to consult Elected Members on themes and priorities. Regular data updates will then be incorporated into the intranet 'Members Information System' supported by improved analysis and narrative. Periodic snapshots in paper document form will continue to be available.

Job Seekers Allowance

The 1991 to 2006 Job Seekers Allowance data give an insight into the number of claimants under pensionable age who are available for, and actively seeking work of at least 40 hours a week.



Job Seekers Allowance Claimants

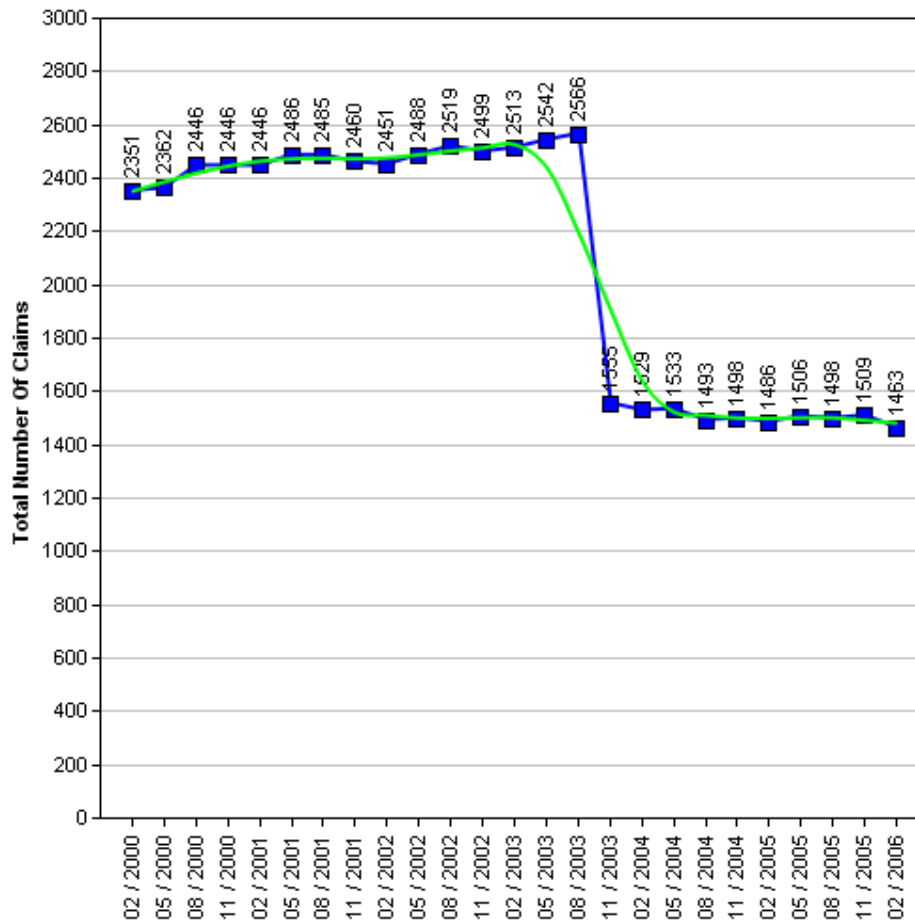
	1999	2000	2001	2002	2003	2004	2005	2006	2007
Quarter 1 (February)	-	917	806	776	761	600	625	673	683
Quarter 2 (May)	-	813	777	791	743	602	612	678	-
Quarter 3 (August)	914	845	747	762	712	537	656	654	-
Quarter 4 (November)	858	793	747	770	653	588	636	666	-



Income Support

The 2000 to 2006 Income Support data give an insight into the number of claimants between the age of 16-59 who have a low income, don't have savings of £16,000 or more, are not working, work on average less than 16 hours a week, or are unable to work because they are:

- A Lone parent
- Registered sick or disabled
- A student and either a lone parent or disabled
- Or caring for someone who is sick or elderly



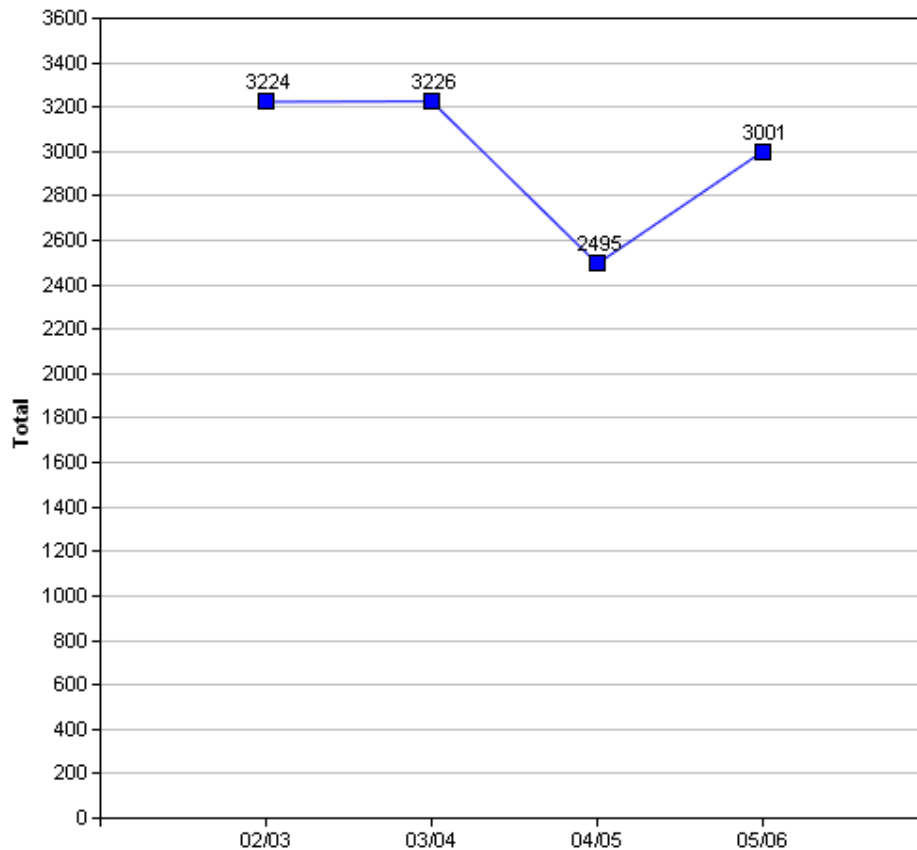
WARNING: In the Income Support table there is a drop in the number of claimants between the months of August 2003 and November 2003. The explanation for this is because "from October 2003, Income Support for pensioners was replaced by 'Pension Credit'" (Source: www.mind.org.uk).

Income Support Claimants

	2000	2001	2002	2003	2004	2005	2006
Quarter 1 (February)	-	2,446	2,451	2,513	1,529	1,486	1,463
Quarter 2 (May)	2,351	2,486	2,488	2,542	1,533	1,506	-
Quarter 3 (August)	2,362	2,485	2,519	2,566	1,493	1,498	-
Quarter 4 (November)	687	688	654	258	240	238	-

Crime

The Crime data is based on the Crime Domain from the Indices of Deprivation 2004. The Crime Domain consists of 33 categories of recorded crime which are then grouped to form 4 composite indicators: burglary, criminal damage, theft and violence. This report gives an insight into the number of offences committed within the selected area and compares this with the Bradford district. The data is displayed for each year by composite indicator.



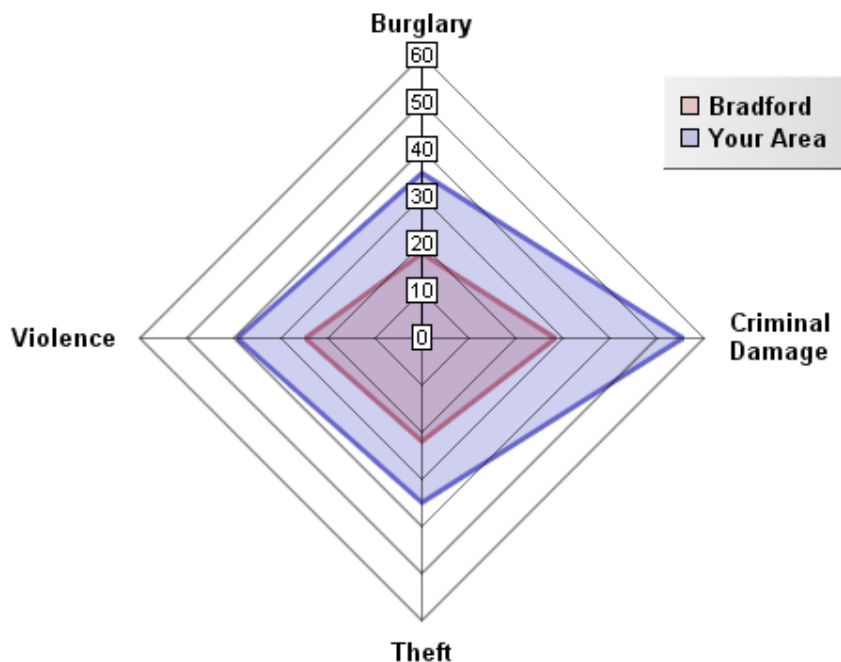
Overall Crime per Year

Year	Bowling and Barkerend Ward			Bradford District		
	No.Offences	Change	% Change	No.Offences	Change	% Change
2002/03	3,224			49,264		
2003/04	3,226	+2	+0.1%	48,973	-291	-0.6%
2004/05	2,495	-731	-22.7%	40,747	-8,226	-16.8%
2005/06	3,001	+506	+20.3%	43,562	+2,815	+6.9%

The pattern of crime in the Bowling and Barkerend Ward has broadly followed a similar trend to the district. In 2004/05 numerous district wide initiatives from West Yorkshire Police and the District Crime and Disorder Reduction Partnership yielded significant reductions in crime across most categories. This was an exceptional year for crime reduction and such significant reductions have proven to be unsustainable in the following years. There has been a 7% reduction in crime in the Bowling and Barkerend Ward between 2002/03 and 2005/06.

It is important to note that ID2004 Crime Domain definition of crime is limited to a subset of crime. A more accurate picture can be obtained by looking at Overall Crime Levels in the district.

05/06 Comparison with District (Rate per 1000 population)

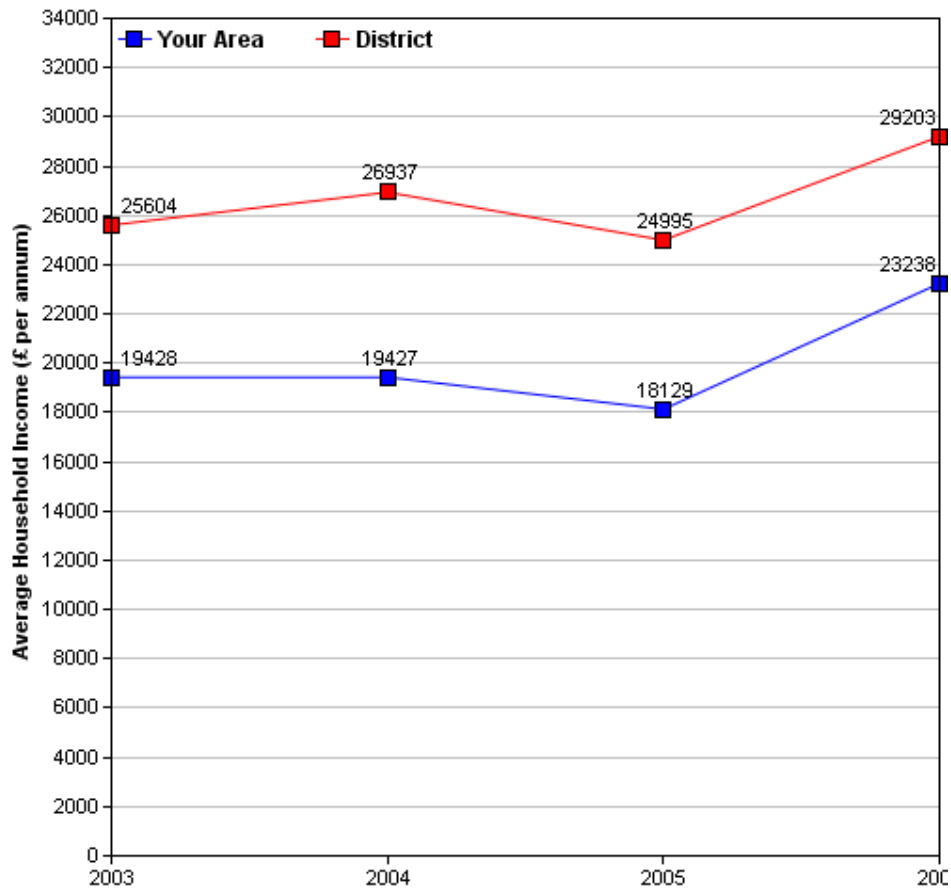


The above crime radar graph compares four variables of crime, per thousand population for your area, with that of the Bradford district. All four crime variables are above those of the district average for your area. The pink line indicates the Bradford District rate per thousand population and the blue line represents the per thousand population rate for your area. The radar graph allows us to see that all four crime variables in your area are well above those of the district average. The radar graph also allows you to see which crime variables are closer or further from the district average, by comparing the gap between the blue and pink lines. Criminal Damage in Bowling and Barkerend (56 per thousand population) is much higher than the district rate (28 per thousand population). Criminal Damage is the furthest from the district average. Higher crime levels in the Bowling and Barkerend ward are a reflection of the higher levels of overall deprivation and urban characteristic of the area.

Income

Information relating to income is derived from data supplied by CACI called 'PayCheck', which provides estimates of mean household income for every postcode in the UK. Unfortunately, it is not possible to use PayCheck data to examine changes in income over time, due to changes in data collection methods. However, it is possible to compare figures from different geographic areas (i.e. Ward and District) for the same time period, as they are derived using the same data collection method.

(For more information on PayCheck data please see www.caci.co.uk.)



Overall Income by Year

	2003	2004	2005	2006
Mean per Annum	£19,428.05	£19,426.51	£18,129.00	£23,237.73
Mean per Annum (District)	£25,604.05	£26,936.70	£24,995.30	£29,203.12

Ethnic Diversity

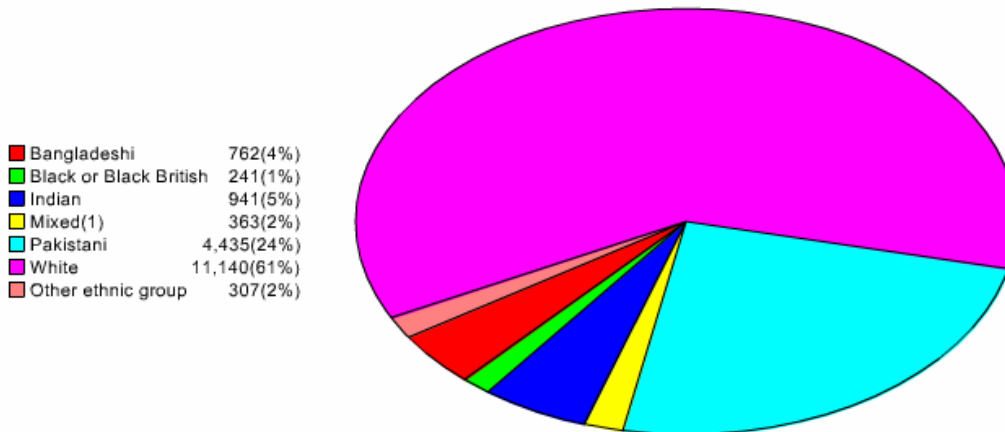
This data comes from 1991 and 2001 Censuses and shows the diversity of ethnic groups within the Bradford District. By comparing the 1991 Census with the 2001 Census we are able to compare the area over time. At both the 1991 (70.6%) and 2001 (61.2%) Census the Bowling and Barkerend ward was almost completely White.

Ethnic Diversity 1991

	Number	Percentage
White	12,901	70.6%
Asian	4,764	26.1%
Black	340	1.9%
Other	267	1.5%

Ethnic Diversity 2001

	Number	Percentage
White	11,141	61.2%
Mixed	363	2%
Asian	6,139	33.7%
Black	241	1.3%
Other	307	1.7%



Travel to Work (Census 2001)

This data comes from the 2001 Census. It has details about the people who travel to and from the area to go to work, and their method of getting there.

Travel from Bowling & Barkerend

Totals

Total People travelling from Area	Distance Travelled (in Km)					
	Average (mean)	Maximum	Standard Deviation	Standard Deviation (of the population)	Variance	Variance (of the population)
5,831	6	343	23	23	513,816	513,771
Method of travel to work						
Works mainly at or from home	Public Transport			Bicycle	On Foot	Other
	Train	Bus etc	Taxi			
451	64	1083	52	44	925	32
By Car				Motorcycle etc		
As driver		As passenger				
2,532		618		25		

By Local Authority

Destination Local Authority	Total People travelling from Area	Distance Travelled (in Km)	
		Average (mean)	Maximum
Bradford	4,958	2	20
Leeds	509	10	25
Kirklees	79	10	22
Calderdale	75	11	15
Wakefield	40	23	37
Harrogate	14	35	47
Craven	12	38	44
York	11	47	49
Sheffield	10	46	48
Pendle	9	96	116
Hillingdon	7	28	33
Barnsley	7	50	60
Angus	6	N/A	N/A
City of London	6	47	52
Manchester	6	30	31

Travel to Bowling & Barkerend

Totals

Total People travelling to Area	Distance Travelled (in Km)					
	Average (mean)	Maximum	Standard Deviation	Standard Deviation (of the population)	Variance	Variance (of the population)
14,670	9	359	22	22	471,653	471,643
Method of travel to work						
Works mainly at or from home	Public Transport			Bicycle	On Foot	Other
	Train	Bus etc	Taxi			
451	154	1945	99	103	1093	23
By Car				Motorcycle etc		
As driver		As passenger				
9,520		1,127		136		

By Local Authority

Origin Local Authority	Total People travelling from Area	Distance Travelled (in Km)	
		Average (mean)	Maximum
Bradford	10,469	5	22
Leeds	1,575	9	29
Kirklees	1,062	12	26
Calderdale	644	12	26
Wakefield	210	23	35
Harrogate	99	28	40
Barnsley	72	32	39
Craven	68	25	37
Selby	50	38	52
Sheffield	31	45	54
Rotherham	29	50	58
York	26	46	50
Rochdale	23	36	40
Pendle	23	30	34
East Riding of Yorkshire	22	67	107

Of the people who travel to work from Bowling & Barkerend, over 54% travel by car (43.4% as drivers and 0.1% as passengers), 4.3% by motorcycle and 0.4% travel by other means (including train, buses, taxis, bicycle, on foot and other modes). The remaining 7.7% work predominantly from home.

Over 60% more people travel to Bowling & Barkerend than those that travel from Bowling & Barkerend.

Of the people who travel to work in Bowling & Barkerend, over 72.6% travel by car (64.9% as drivers and 7.7% as passengers), 0.9% by motorcycle and 23.3% travel by other means (including train, buses, taxis, bicycle, on foot and other modes). The remaining 3.1% work predominantly from home.

Indices of Deprivation 2004 (ID2004)

The Index of Multiple Deprivation 2004 (IMD 2004) is a Super Output Area (SOA) level measure of multiple deprivation. England is divided into 32,482 SOAs, which are small areas containing an average of 1,500 residents. The IMD 2004 project gives a score and rank to each SOA for seven areas of deprivation:

- Income deprivation
- Employment deprivation
- Health deprivation and disability
- Education, skills and training deprivation
- Barriers to Housing and Services
- Living environment deprivation
- Crime

Also, each SOA has been given an overall score and rank which takes into account all seven indices, and this is known as the Index of Multiple Deprivation 2004.

Ranks vary from 1 to 32,482, with 1 being the most deprived. Higher scores indicate that areas are more deprived. When comparing the deprivation of different areas, it is better to look at the rank than the score. Bradford Council has been able to use the Maps and Stats web-based GIS system (www.mapsandstats.com) to combine scores for the SOAs that fall within the wards, and hence estimate the Indices of Deprivation at ward level.

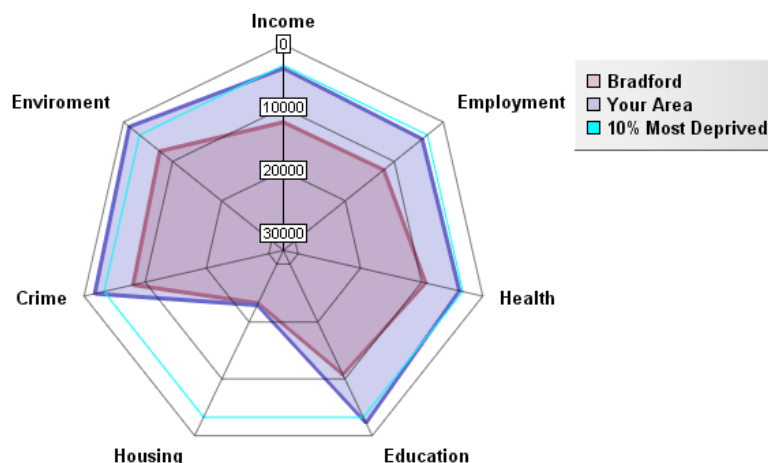
Index of Multiple Deprivation 2004

	ID 2004 Overall Rank (Average)	ID 2004 Overall Score
E01020885 in Wear Valley LA	2340	49.82
Bowling and Barkerend Ward	2340.58	53.63
E01001220 in Ealing LA	2341	49.82
Average for Bradford	10656.03	32.93

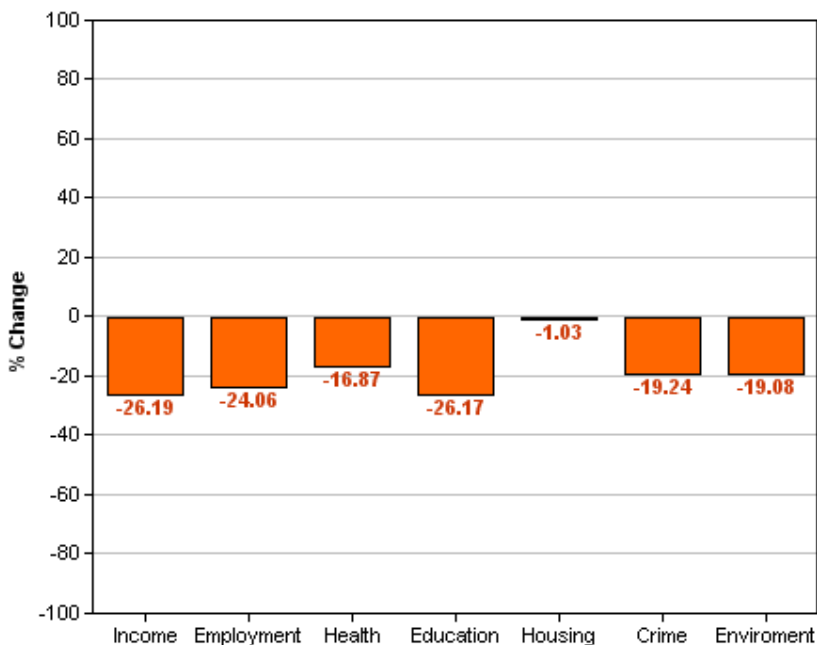
This table shows the average ranks and scores for the Bowling and Barkerend ward. The rows above and below Bowling and Barkerend show which SOAs in England have the most similar ranks to this ward, and are therefore considered to have the most similar levels of deprivation. It is important to note, however, that these areas may be deprived for different reasons.

Area Rank against Average Bradford

The following radar graph and bar chart indicate Bowling and Barkerend ward is significantly more deprived compared to the rest of the District on all domain indices of deprivation. Only in the Housing domain of the Index of Deprivation 2004 is Bowling and Barkerend at a similar level of deprivation to that of the Bradford District, although this is likely to reflect the low level of deprivation within Bradford for this domain. This is due mainly to the urban nature of Bradford, which means that there are amenities relatively close to where people live and is not necessarily due to a high standard of house stock. The difference between the Bradford District average and Bowling and Barkerend is greatest for Income (-26.1), Education (-26.1) and Employment (-24.0) domains. This indicates that on Income, Education and Employment Bowling and Barkerend is more deprived compared to the rest of the district. Overall Bowling and Barkerend is significantly deprived with only Housing being closest to approaching that of the Bradford District for this domain.



Percentage Difference between Area Rank and Average Bradford Rank



Other dataset currently being investigated/acquired

Health

Low birth weight
 Death Rates
 Smoking attributable health admissions
 Perception Surveys (Speak-out)

Education

%5 A – C GCSE’s (Inc. Maths and English)
 Key Stage Results
 Adult qualifications
 Truancy

Economy

Benefit measures & Incapacity benefit
 Income levels (Household)
 NEET’s
 Business start-up survival rates

Crime

Criminal damage
 Burglary
 ASB (Needs clarifying)
 Youth offending
 Road traffic accidents (RTA)


Liveability

House prices
 Void properties
 Cleanliness
 Open spaces
 Housing condition

Stronger Communities

Voting rates

Plus many other council datasets as they become available through the GIS strategy.

	<p>All 30 Ward profiles and supplements can be found at: http://www.bradfordinfo.com/census/WardProfiles.cfm</p> <p>This bulletin was produced by the Research and Consultation Service, City of Bradford Metropolitan District Council. Email: stephen.elves@bradford.gov.uk Tel: 01274 43 7269 August 2007</p>
---	--