

Bradford Moor Ward Profile Supplement

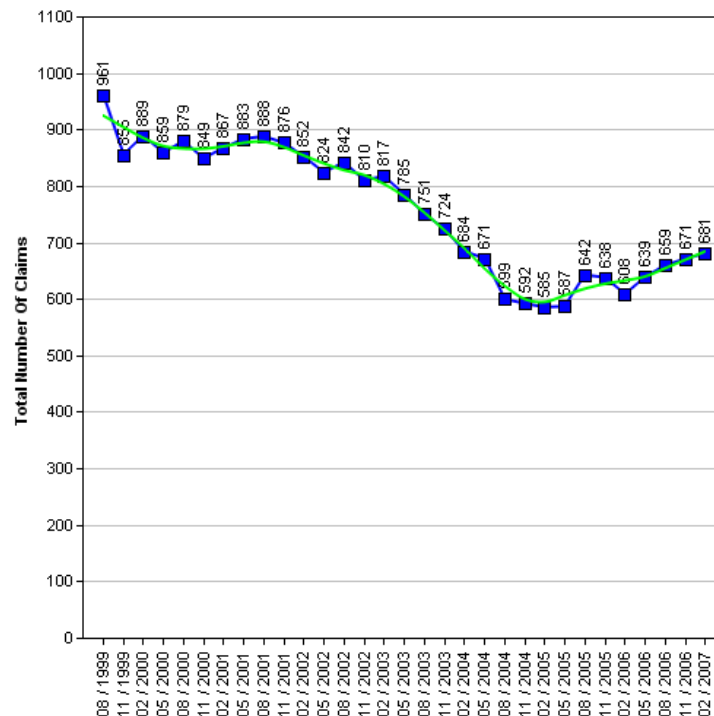
The Census is a survey of all people and households in the country that takes place every 10 years. The Census was last carried out in 2001, with results published in 2003. The next Census is due in 2010, with results expected in 2013. Consequently the actual data cannot be updated in intervening years.

Work has been underway for some time to produce a range of alternative datasets for Bradford to supplement the 2001 Census data with more current and relevant information, which will better describe conditions and progress across the District. This supplement provides a taster of that work.

It is the intention to consult Elected Members on themes and priorities. Regular data updates will then be incorporated into the intranet 'Members Information System' supported by improved analysis and narrative. Periodic snapshots in paper document form will continue to be available.

Job Seekers Allowance

The 1991 to 2006 Job Seekers Allowance data give an insight into the number of claimants under pensionable age who are available for, and actively seeking work of at least 40 hours a week.



Job Seekers Allowance Claimants

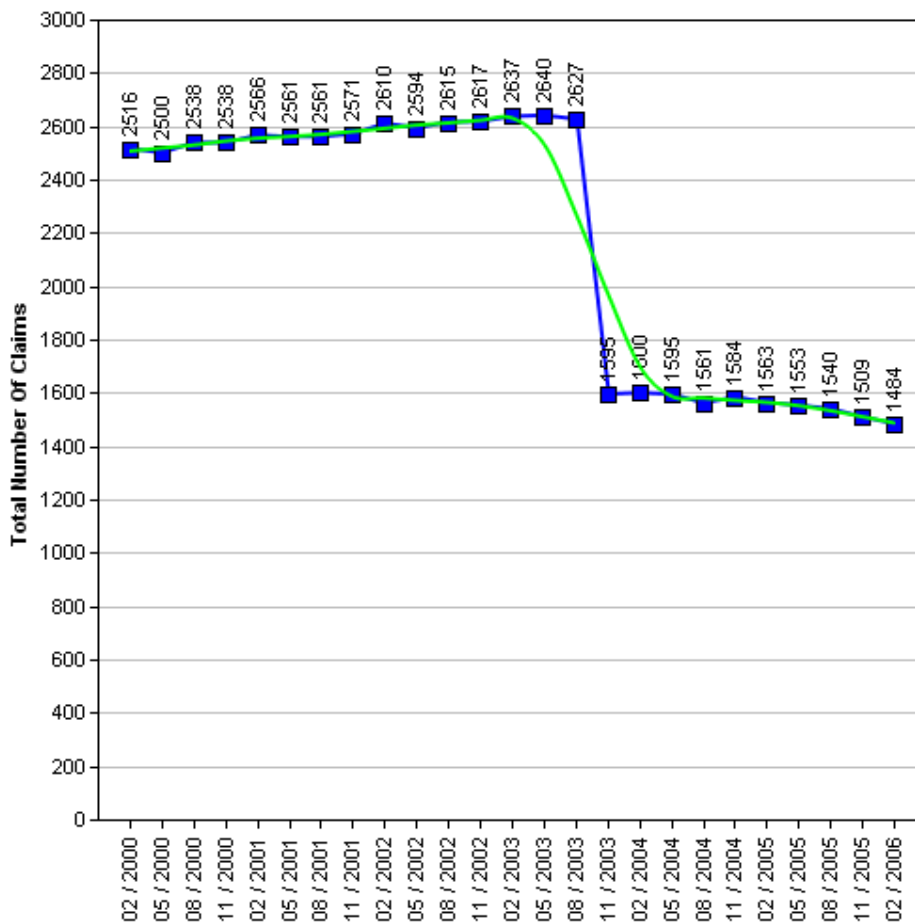
	1999	2000	2001	2002	2003	2004	2005	2006	2007
Quarter 1 (February)	-	889	867	852	817	684	585	608	681
Quarter 2 (May)	-	859	883	824	785	671	587	639	-
Quarter 3 (August)	961	879	888	842	751	599	642	659	-
Quarter 4 (November)	859	849	876	810	724	592	638	671	-



Income Support

The 2000 to 2006 Income Support data give an insight into the number of claimants between the age of 16-59 who have a low income, don't have savings of £16,000 or more, are not working, work on average less than 16 hours a week, or are unable to work because they are:

- A Lone parent
- Registered sick or disabled
- A student and either a lone parent or disabled
- Or caring for someone who is sick or elderly



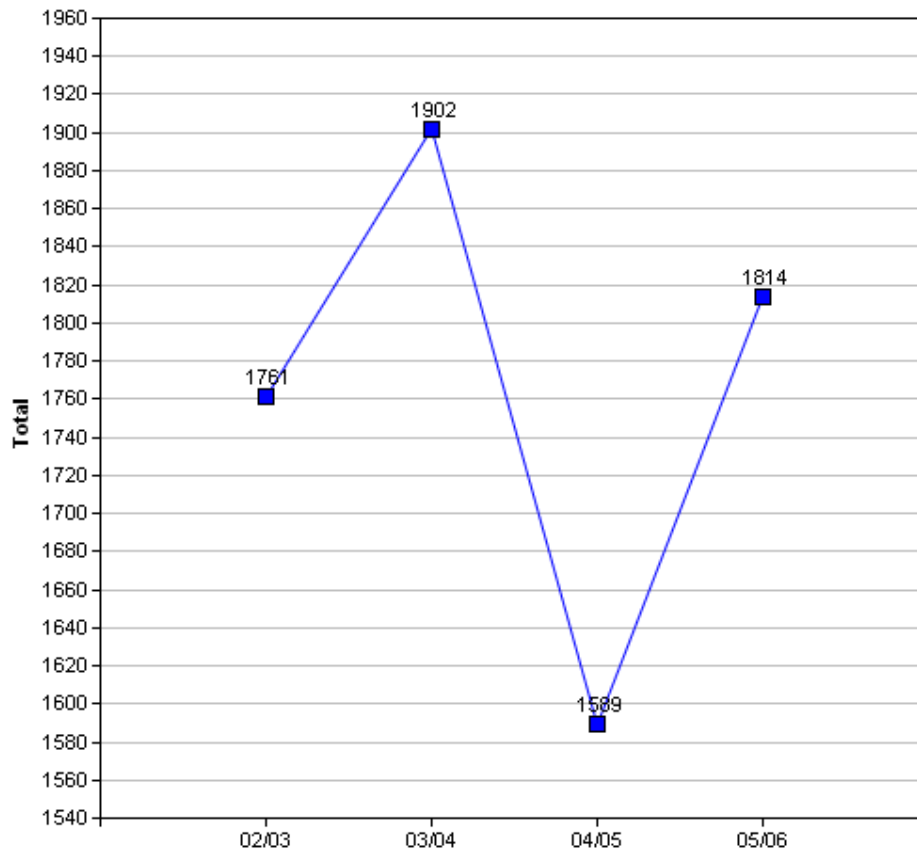
WARNING: In the Income Support table there is a drop in the number of claimants between the months of August 2003 and November 2003. The explanation for this is because "from October 2003, Income Support for pensioners was replaced by 'Pension Credit'" (Source: www.mind.org.uk).

Income Support Claimants

	2000	2001	2002	2003	2004	2005	2006
Quarter 1 (February)	2,516	2,566	2,610	2,637	1,600	1,563	1484
Quarter 2 (May)	2,500	2,561	2,594	2,640	1,595	1,553	-
Quarter 3 (August)	2,538	2,561	2,615	2,627	1,561	1,540	-
Quarter 4 (November)	2,538	2,571	2,617	1,595	1,584	1,509	-

Crime

The Crime data is based on the Crime Domain from the Indices of Deprivation 2004. The Crime Domain consists of 33 categories of recorded crime which are then grouped to form 4 composite indicators: burglary, criminal damage, theft and violence. This report gives an insight into the number of offences committed within the selected area and compares this with the Bradford district. The data is displayed for each year by composite indicator.

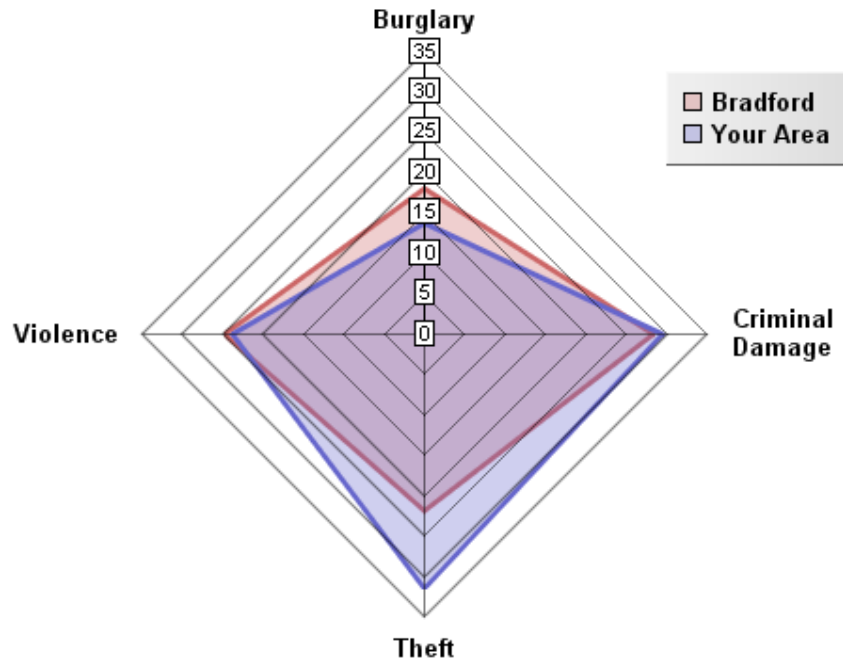


Overall Crimes per Year

Year	Selected Area			Bradford District		
	No.Offences	Change	% Change	No.Offences	Change	% Change
2002/03	1,761			49,264		
2003/04	1,902	+141	+8.0%	48,973	-291	-0.6%
2004/05	1,589	-313	-16.6%	40,747	-8,226	-16.8%
2005/06	1,814	+225	+14.0%	43,562	+2,815	+6.9%

The pattern of crime in the Bradford Moor Ward has broadly followed a similar trend to the district. In 2004/05 numerous district wide initiatives from West Yorkshire Police and the District Crime and Disorder Reduction Partnership yielded significant reductions in crime across most categories. This was an exceptional year for crime reduction and such significant reductions have proven to be unsustainable in the following years. There has been a 3% increase in crime between 2002 and 2006. Bradford Moor has been a hotspot for abandoned vehicles for some time. This increase is probably due to the vehicle crime being recorded in this area. However this does not mean that more vehicles are being stolen, or broken into in this area. It is important to note that ID2004 Crime Domain definition of crime is limited to a subset of crime. A more accurate picture can be obtained by looking at Overall Crime Levels in the district.

05/06 Comparison with District (Rate per 1000 population)

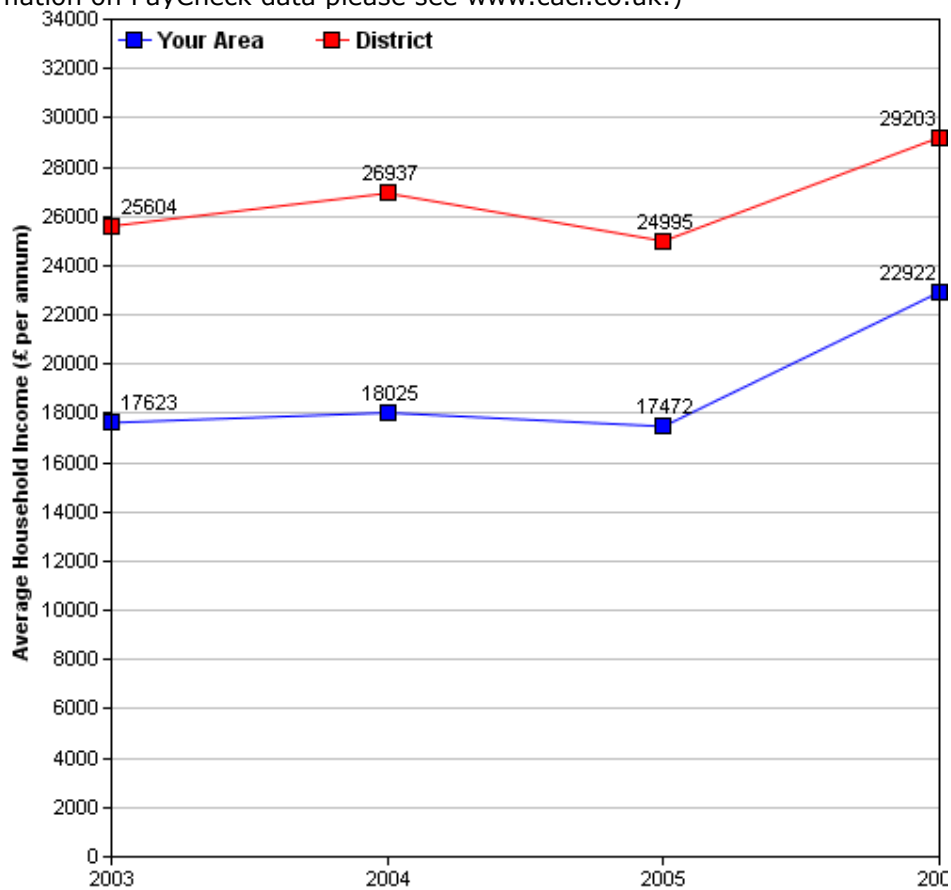


The above crime radar graph compares four variables of crime, per thousand population for your area, with that of the Bradford district. The pink line indicates the Bradford District average rate and the blue line represents the average rate for your area. The radar graph indicates that for your area Theft is significantly above the district average. Violence and Criminal Damage rates for your area are similar to those of the Bradford District. The radar graph also allows you to see which crime variables are closer or further from the district rate, by comparing the gap between the blue and pink lines. Burglary for your area is well below the district average. Overall, the crime levels in Bradford Moor reflect the general higher levels of both deprivation and unemployment experienced by this ward.

Income

Information relating to income is derived from data supplied by CACI called 'PayCheck', which provides estimates of mean household income for every postcode in the UK. Unfortunately, it is not possible to use PayCheck data to examine changes in income over time, due to changes in data collection methods. However, it is possible to compare figures from different geographic areas (i.e. Ward and District) for the same time period, as they are derived using the same data collection method.

(For more information on PayCheck data please see www.caci.co.uk.)



Overall Income by Year

	2003	2004	2005	2006
Mean per Annum	£17,623.78	£18,025.95	£17,472.83	£22,922.09
Mean per Annum (District)	£25,604.05	£26,937.70	£24,995.30	£29,203.12

Ethnic Diversity

This data comes from the 1991 and 2001 Censuses and shows the diversity of ethnic groups within the Bradford District. By comparing the 1991 Census with the 2001 Census we are able to compare the area over time. The Bradford Moor ward appears to have become less diverse, because there has been an increase in the percentage of Asians 64.4% (2001) from 47.5% (1991) and the percentage of Whites has decreased from 47.5% (1991) to 30.5% (2001).

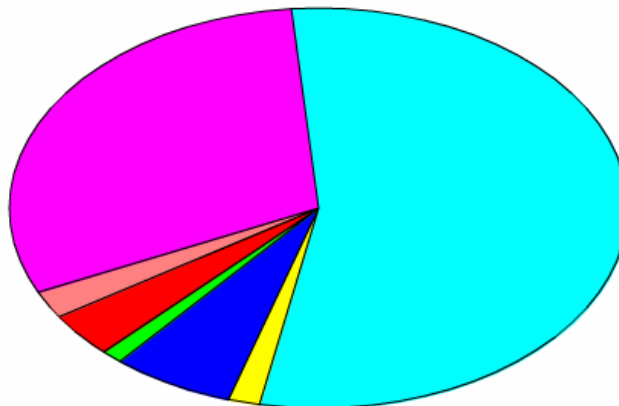
Ethnic Diversity 1991

	Number	Percentage
White	8,150	47.5%
Asian	8,152	47.5%
Black	309	1.8%
Other	535	3.1%

Ethnic Diversity 2001

	Number	Percentage
White	5,596	30.5 %
Mixed	311	1.7 %
Asian	11,830	64.4 %
Black	198	1.1 %
Other	438	2.4 %

■ Bangladeshi	645(4%)
■ Black or Black British	198(1%)
■ Indian	1,192(6%)
■ Mixed(1)	311(2%)
■ Pakistani	9,992(54%)
■ White	5,596(30%)
■ Other ethnic group	437(2%)



Travel to Work (Census 2001)

This data comes from the 2001 Census. It has details about the people who travel to and from the area to go to work, and their method of getting there.

Travel from Bradford Moor

Totals

Total People travelling from Area	Distance Travelled (in Km)					
	Average (mean)	Maximum	Standard Deviation	Standard Deviation (of the population)	Variance	Variance (of the population)
4,445	7	306	25	25	601,212	601,133
Method of travel to work						
Works mainly at or from home	Public Transport			Bicycle	On Foot	Other
	Train	Bus etc	Taxi			
378	56	804	63	30	756	24
By Car				Motorcycle etc		
As driver		As passenger				
1,897		413		12		

By Local Authority

Destination Local Authority	Total People travelling from Area	Distance Travelled (in Km)	
		Average (mean)	Maximum
Bradford	3,446	2	19
Leeds	619	8	23
Kirklees	117	11	19
Wakefield	66	23	36
Calderdale	39	13	19
Harrogate	32	29	40
Craven	12	23	28
Westminster	9	277	278
Ryedale	6	60	60
Manchester	6	49	49
Liverpool	6	92	94
Doncaster	6	50	50
Oldham	6	39	39
Selby	6	37	43
Sheffield	6	50	50

Travel to Bradford Moor

Totals

Total People travelling from Area	Distance Travelled (in Km)					
	Average (mean)	Maximum	Standard Deviation	Standard Deviation (of the population)	Variance	Variance (of the population)
5,364	7	312	18	18	306,649	306,627
Method of travel to work						
Works mainly at or from home	Public Transport			Bicycle	On Foot	Other
	Train	Bus etc	Taxi			
378	52	652	79	42	762	15
By Car				Motorcycle etc		
As driver		As passenger				
2,939		414		31		

By Local Authority

Origin Local Authority	Total People travelling from Area	Distance Travelled (in Km)	
		Average (mean)	Maximum
Bradford	4,048	4	21
Leeds	818	7	24
Kirklees	209	13	26
Calderdale	94	12	22
Wakefield	58	21	34
Harrogate	23	26	34
Barnsley	17	30	37
Craven	14	26	37
Mid Bedfordshire	9	212	215
Sheffield	8	42	47
Selby	6	42	47
Pendle	6	31	34
Sunderland	6	119	125
Rotherham	5	52	55
Oldham	5	37	39

Of the people who travel to work from Bradford Moor, over 52% travel by car (42.7% as drivers and 9.3% as passengers), 2.7% by motorcycle and 0.4% travel by other means (including train, buses, taxis, bicycle, on foot and other modes). The remaining 8.5% work predominantly from home.

Over 17% more people travel to Bradford Moor than those that travel from Bradford Moor.

Of the people who travel to work in Bradford Moor, over 62.5% travel by car (54.8% as drivers and 7.7% as passengers), 0.6% by motorcycle and 29.9% travel by other means (including train, buses, taxis, bicycle, on foot and other modes). The remaining 7.1% work predominantly from home.

Indices of Deprivation 2004 (ID2004)

The Index of Multiple Deprivation 2004 (IMD 2004) is a Super Output Area (SOA) level measure of multiple deprivation. England is divided into 32,482 SOAs, which are small areas containing an average of 1,500 residents. The IMD 2004 project gives a score and rank to each SOA for seven areas of deprivation:

- Income deprivation
- Employment deprivation
- Health deprivation and disability
- Education, skills and training deprivation
- Barriers to Housing and Services
- Living environment deprivation
- Crime

Also, each SOA has been given an overall score and rank which takes into account all seven indices, and this is known as the Index of Multiple Deprivation 2004.

Ranks vary from 1 to 32,482, with 1 being the most deprived. Higher scores indicate that areas are more deprived. When comparing the deprivation of different areas, it is better to look at the rank than the score. Bradford Council has been able to use the Maps and Stats web-based GIS system (www.mapsandstats.com) to combine scores for the SOAs that fall within the wards, and hence estimate the Indices of Deprivation at ward level.

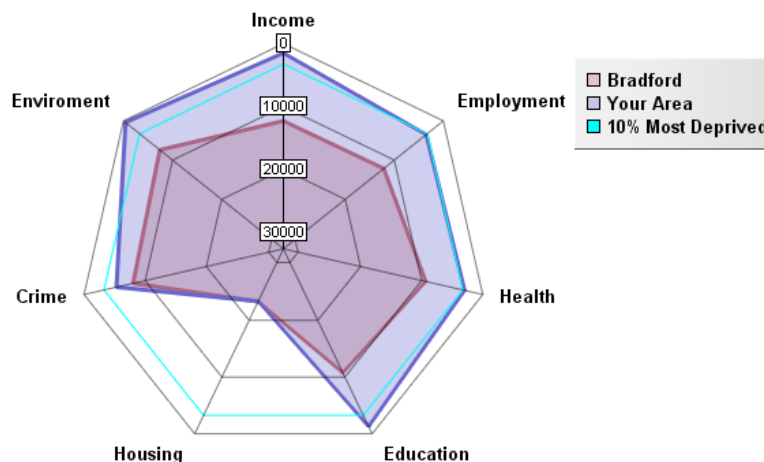
Index of Multiple Deprivation 2004

	ID 2004 Overall Rank (Average)	ID 2004 Overall Score
E01010680 in Bradford LA	1518	54.7
Bradford Moor Ward	1518.29	57.23
E01005564 in Rochdale LA	1519	54.7
Average for Bradford	10656.03	32.93

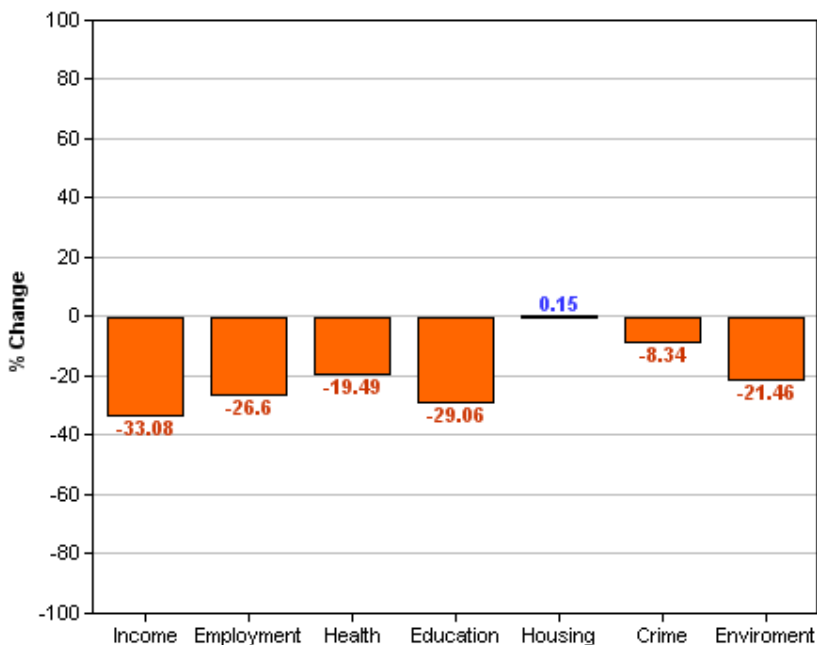
This table shows the average ranks and scores for the Bradford Moor ward. The rows above and below Bradford Moor show which SOAs in England have the most similar ranks to this ward, and are therefore considered to have the most similar levels of deprivation. It is important to note, however, that these areas may be deprived for different reasons.

Area Rank Against Average Bradford Rank

The following radar graph and bar chart indicate that Bradford Moor ward is significantly more deprived compared to the rest of the District on all domain indices of deprivation. Only in the Housing domain of the Index of Deprivation 2004 is Bradford Moor at a similar level of deprivation to that of the Bradford District, although this is likely to reflect the low level of deprivation within Bradford for this domain. This is due mainly to the urban nature of Bradford, which means that there are amenities relatively close to where people live and is not necessarily due to a high standard of house stock. The difference between the Bradford District average and Bradford Moor is greatest for Income (-33.0), Education (-29.0) and Employment (-26.6) domains. This indicates that on Income, Education and Employment Bradford Moor is significantly more deprived compared to the rest of the district. Employment and Health domains for Bradford Moor indicate they fall into the 10% most deprived areas in the district. Education, Environment and Income domains fall into the bottom 3% of deprivation rankings for the district. Overall Bradford Moor is significantly deprived with only Housing being slightly above that of the Bradford District average.



Percentage Difference Between Area Rank And Average Bradford Rank



Other dataset currently being investigated/acquired:

Health

- Low birth weight
- Death Rates
- Smoking attributable health admissions
- Perception Surveys (Speak-out)

Education

- %5 A – C GCSE’s (Inc. Maths and English)
- Key Stage Results
- Adult qualifications
- Truancy

Economy

- Benefit measures & Incapacity benefit
- Income levels (Household)
- NEET’s
- Business start-up survival rates

Crime

- Criminal damage
- Burglary
- ASB (Needs clarifying)
- Youth offending
- Road traffic accidents (RTA)


Liveability

- House prices
- Void properties
- Cleanliness
- Open spaces
- Housing condition

Stronger Communities

- Voting rates

Plus many other council datasets as they become available through the GIS strategy.

	<p>All 30 Ward profiles and supplements can be found at: http://www.bradfordinfo.com/census/WardProfiles.cfm</p> <p>This bulletin was produced by the Research and Consultation Service, City of Bradford Metropolitan District Council. Email: stephen.elves@bradford.gov.uk Tel: 01274 43 7269 August 2007</p>
---	--