

## City Ward Profile Supplement

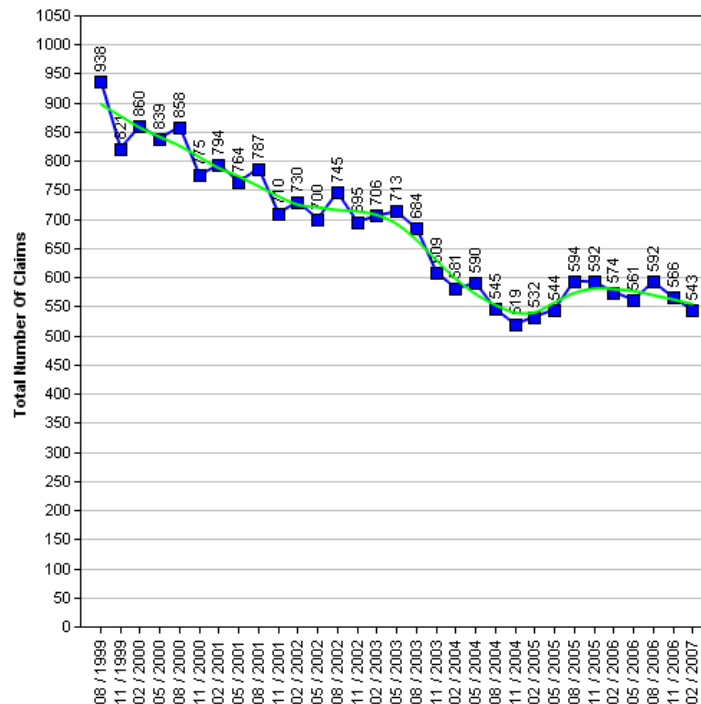
The Census is a survey of all people and households in the country that takes place every 10 years. The Census was last carried out in 2001, with results published in 2003. The next Census is due in 2010, with results expected in 2013. Consequently the actual data cannot be updated in intervening years.

Work has been underway for some time to produce a range of alternative datasets for Bradford to supplement the 2001 Census data with more current and relevant information, which will better describe conditions and progress across the District. This supplement provides a taster of that work.

It is the intention to consult Elected Members on themes and priorities. Regular data updates will then be incorporated into the intranet 'Members Information System' supported by improved analysis and narrative. Periodic snapshots in paper document form will continue to be available.

### Job Seekers Allowance

The 1991 to 2006 Job Seekers Allowance data give an insight into the number of claimants under pensionable age who are available for, and actively seeking work of at least 40 hours a week.



### Job Seekers Allowance Claimants

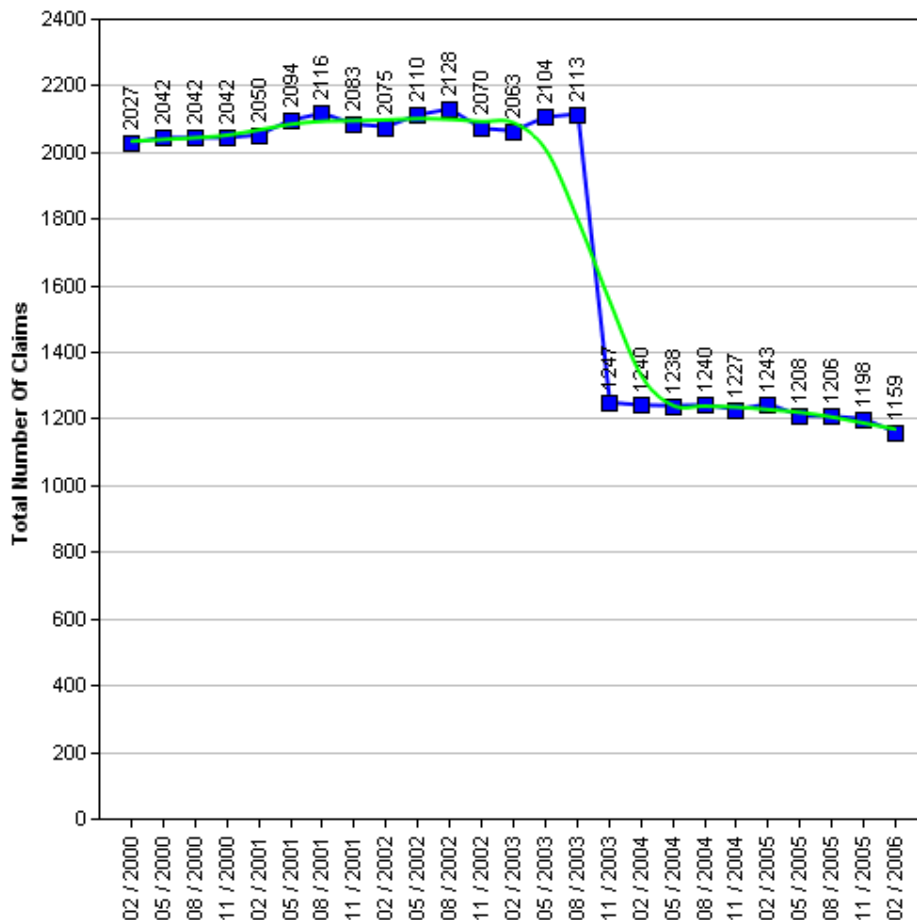
|                    | 1999 | 2000 | 2001 | 2002 | 2003 | 2004 | 2005 | 2006 | 2007 |
|--------------------|------|------|------|------|------|------|------|------|------|
| Quarter (February) |      | 860  | 794  | 730  | 706  | 581  | 532  | 574  | 543  |
| Quarter (May)      |      | 839  | 764  | 700  | 713  | 590  | 544  | 561  |      |
| Quarter (August)   | 938  | 858  | 787  | 745  | 684  | 545  | 594  | 592  |      |
| Quarter November   | 821  | 775  | 710  | 695  | 609  | 519  | 592  | 566  |      |



## Income Support

The 2000 to 2006 Income Support data give an insight into the number of claimants between the age of 16-59 who have a low income, don't have savings of £16,000 or more, are not working, work on average less than 16 hours a week, or are unable to work because they are:

- A Lone parent
- Registered sick or disabled
- A student and either a lone parent or disabled
- Or caring for someone who is sick or elderly



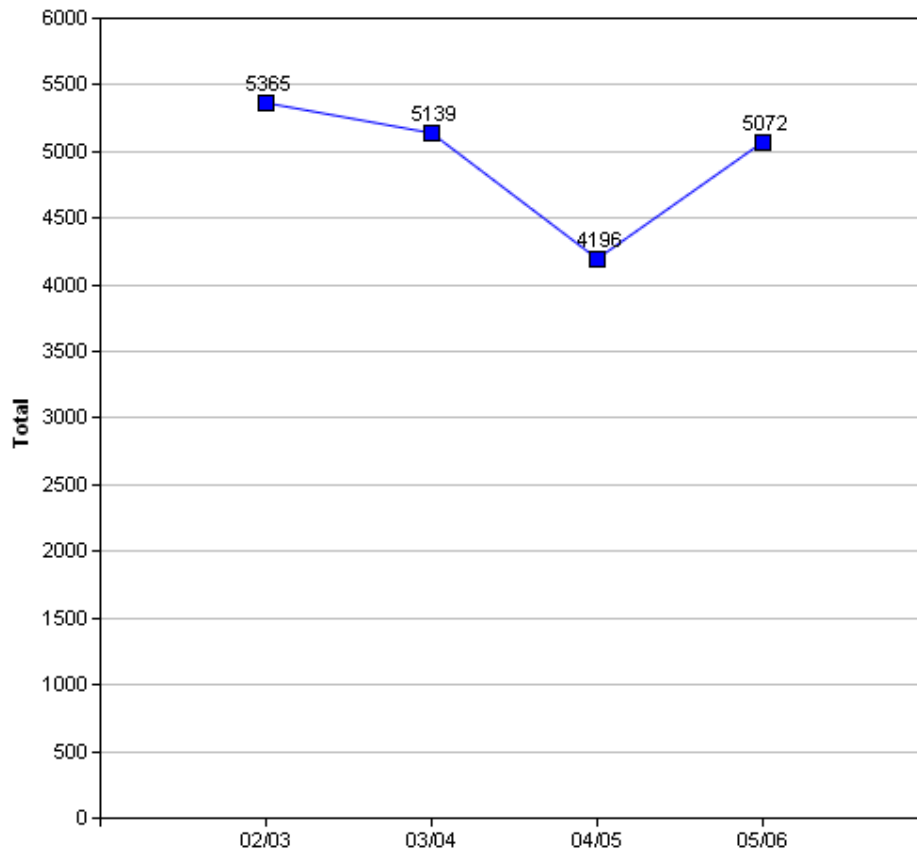
**WARNING:** In the Income Support table there is a drop in the number of claimants between the months of August 2003 and November 2003. The explanation for this is because "from October 2003, Income Support for pensioners was replaced by 'Pension Credit'" (Source: [www.mind.org.uk](http://www.mind.org.uk)).

### Income Support Claimants

|                    | 2000  | 2001  | 2002  | 2003  | 2004  | 2005  | 2006  |
|--------------------|-------|-------|-------|-------|-------|-------|-------|
| Quarter (February) | 2,027 | 2,050 | 2,075 | 2,063 | 1,240 | 1,243 | 1,159 |
| Quarter (May)      | 2,042 | 2,094 | 2,110 | 2,104 | 1,238 | 1,208 | -     |
| Quarter (August)   | 2,042 | 2,116 | 2,128 | 2,113 | 1,240 | 1,206 | -     |
| Quarter November   | 2,042 | 2,083 | 2,070 | 1,247 | 1,227 | 1,198 | -     |

## Crime

The Crime data is based on the Crime Domain from the Indices of Deprivation 2004. The Crime Domain consists of 33 categories of recorded crime which are then grouped to form 4 composite indicators: burglary, criminal damage, theft and violence. This report gives an insight into the number of offences committed within the selected area and compares this with the Bradford district. The data is displayed for each year by composite indicator.

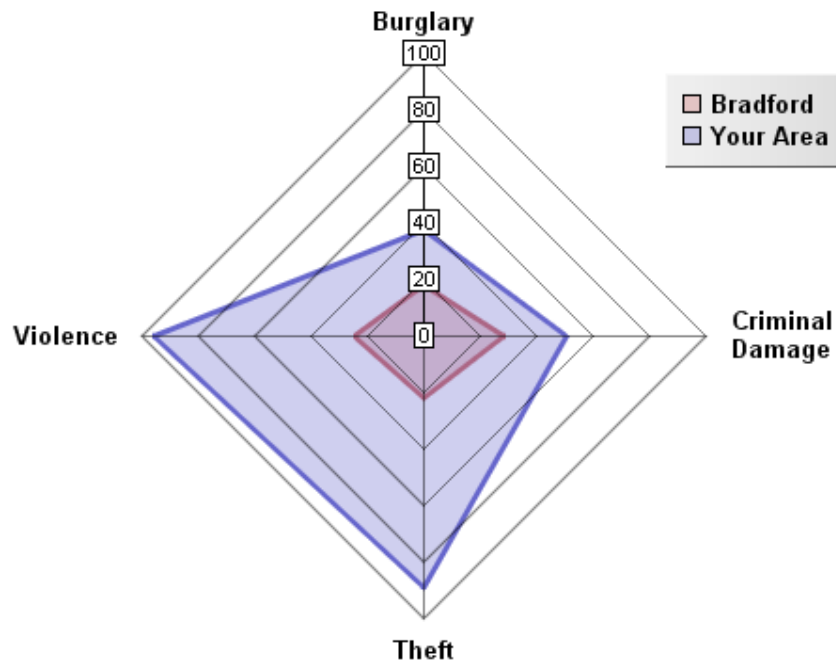


### Overall Crimes per Year

| Year    | Selected Area |        |          | Bradford District |        |          |
|---------|---------------|--------|----------|-------------------|--------|----------|
|         | No.Offences   | Change | % Change | No.Offences       | Change | % Change |
| 2002/03 | 5,365         |        |          | 49,264            |        |          |
| 2003/04 | 5,139         | -226   | -4.2%    | 48,973            | -291   | -0.6%    |
| 2004/05 | 4,196         | -943   | -18.3%   | 40,747            | -8,226 | -16.8%   |
| 2005/06 | 5,072         | +876   | +20.9%   | 43,562            | +2,815 | +6.9%    |

The pattern of crime in the City Ward has broadly followed a similar trend to the district. In 2004/05 numerous district wide initiatives from West Yorkshire Police and the District Crime and Disorder Reduction Partnership yielded significant reductions in crime across most categories. This proved to be an exceptional year for crime reduction for the district. Further significant crime reductions have proven to be unsustainable in the following years. In 2005/06 crime in your area increased significantly more than that of the district, this may be due to the concentration of violent offences and theft in the city centre, which increased at a similar rate district wide. However, Crime has decreased by 46% between 2002 and 2006 in this area. It is important to note that ID2004 Crime Domain definition of crime is limited to a subset of crime. A more accurate picture can be obtained by looking at Overall Crime Levels in the district.

## 05/06 Comparison with District (Rate per 1000 population)

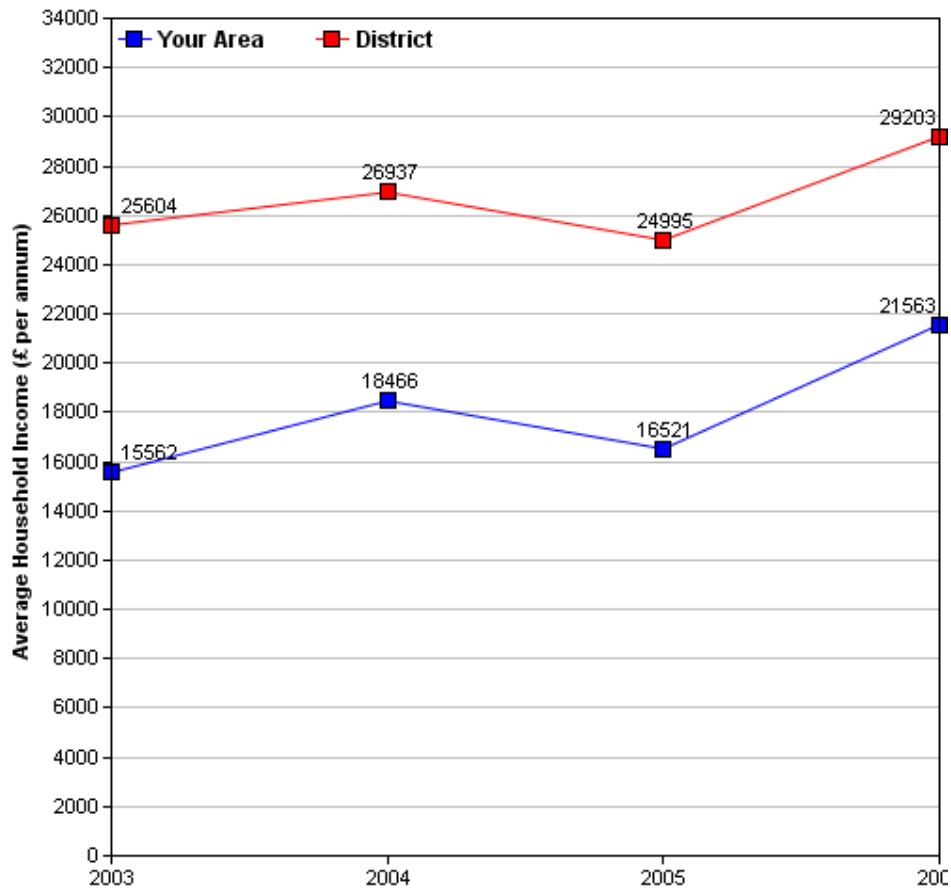


The above crime radar graph compares four variables of crime, per thousand population for your area, with that of the Bradford district. The pink line indicates the Bradford District rate per thousand population and the blue line represents the rate for your area. The radar graph allows us to see that three crime variables in your area are similar to those of the district, with the exception of Violence, as the rate per thousand population significantly exceeds that of the District for this variable. The radar graph also allows you to see which crime variables are closer or further from the district rate, by comparing the gap between the blue and pink lines. Violence (46 per thousand population) for your area is higher than the district rate (22 per thousand population). Burglary is closer to the district average, as the gap between the pink and blue lines are shortest for this variable, when compared to the other crime variables for your area. The gaps between the district rate and your area are longer for Violence. The high rate of violent crime for Keighley Central may well reflect the town centre characteristics of late night entertainment and high concentration of premises selling alcohol.

## Income

Information relating to income is derived from data supplied by CACI called 'PayCheck', which provides estimates of mean household income for every postcode in the UK. Unfortunately, it is not possible to use PayCheck data to examine changes in income over time, due to changes in data collection methods. However, it is possible to compare figures from different geographic areas (i.e. Ward and District) for the same time period, as they are derived using the same data collection method.

(For more information on PayCheck data please see [www.caci.co.uk](http://www.caci.co.uk).)



### Overall Income by Year

|                           | 2003       | 2004       | 2005       | 2006       |
|---------------------------|------------|------------|------------|------------|
| Mean per Annum            | 15,562.47  | £18,466.49 | £16,521.97 | £21,563.85 |
| Mean per Annum (District) | £25,604.05 | £26,937.70 | £24,995.30 | £29,203.12 |

## Ethnic Diversity

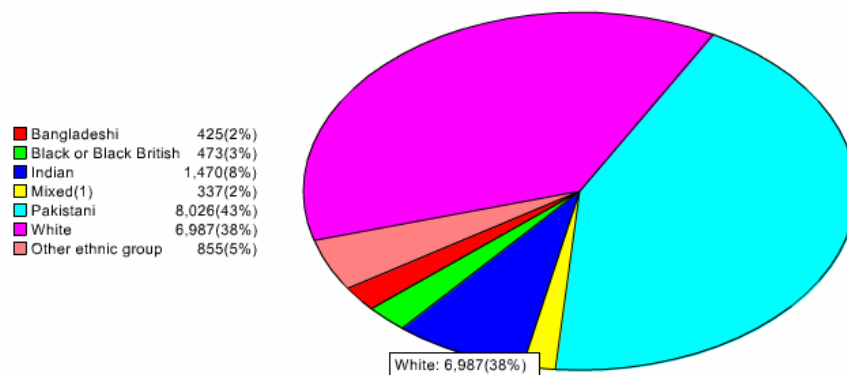
This data comes from the 1991 and 2001 Censuses and shows the diversity of ethnic groups within the Bradford District. By comparing the 1991 Census with the 2001 Census we are able to compare the area over time. The City ward appears to have become more diverse.

### Ethnic Diversity 1991

|       | Number | Percentage |
|-------|--------|------------|
| White | 5,767  | 37.3 %     |
| Asian | 8,625  | 55.8 %     |
| Black | 422    | 2.7 %      |
| Other | 653    | 4.2 %      |

### Ethnic Diversity 2001

|       | Number | Percentage |
|-------|--------|------------|
| White | 6,987  | 37.6 %     |
| Mixed | 337    | 1.8 %      |
| Asian | 9,922  | 53.4 %     |
| Black | 474    | 2.6 %      |
| Other | 855    | 4.6 %      |



## Travel to Work (Census 2001)

This data comes from the 2001 Census. It has details about the people who travel to and from the area to go to work, and their method of getting there.

### Travel from City

#### Totals

| Total People travelling from Area | Distance Travelled (in Km) |                     |                    |  |           |                              |
|-----------------------------------|----------------------------|---------------------|--------------------|--|-----------|------------------------------|
|                                   | Average (mean)             | Maximum             | Standard Deviation | Standard Deviation (of the population) | Variance  | Variance (of the population) |
| 4,332                             | 9                          | 339                 | 36                 | 36                                     | 1,276,117 | 1,275,969                    |
| <b>Method of travel to work</b>   |                            |                     |                    |  |           |                              |
| Works mainly at or from home      | Public Transport           |                     |                    | Bicycle                                | On Foot   | Other                        |
|                                   | Train                      | Bus etc             | Taxi               |  |           |                              |
| 330                               | 139                        | 650                 | 63                 | 41                                     | 1,137     | 33                           |
| <b>By Car</b>                     |                            |                     |                    | <b>Motorcycle etc</b>                  |           |                              |
| <b>As driver</b>                  |                            | <b>As passenger</b> |                    |  |           |                              |
| 1,590                             |                            | 337                 |                    | 6                                      |           |                              |

#### By Local Authority

| Destination Local Authority | Total People travelling from Area | Distance Travelled (in Km) |         |
|-----------------------------|-----------------------------------|----------------------------|---------|
|                             |                                   | Average (mean)             | Maximum |
| Bradford                    | 3,461                             | 2                          | 18      |
| Leeds                       | 400                               | 13                         | 28      |
| Kirklees                    | 99                                | 12                         | 24      |
| Calderdale                  | 73                                | 9                          | 13      |
| Wakefield                   | 25                                | 22                         | 29      |
| Harrogate                   | 24                                | 46                         | 48      |
| Craven                      | 22                                | 27                         | 29      |
| York                        | 15                                | 24                         | 31      |
| Sheffield                   | 15                                | 49                         | 49      |
| Pendle                      | 9                                 | 61                         | 62      |
| Hillingdon                  | 9                                 | 49                         | 53      |
| Barnsley                    | 9                                 | 50                         | 52      |
| Angus                       | 6                                 | 61                         | 62      |
| City of London              | 6                                 | 146                        | 146     |
| Manchester                  | 6                                 | 249                        | 249     |

## Travel to City

### Totals

| Total People travelling to Area | Distance Travelled (in Km) |              |                    |  |          |                              |
|---------------------------------|----------------------------|--------------|--------------------|--|----------|------------------------------|
|                                 | Average (mean)             | Maximum      | Standard Deviation | Standard Deviation (of the population) | Variance | Variance (of the population) |
| 38,782                          | 11                         | 413          | 27                 | 27                                     | 751,713  | 751,708                      |
| <b>Method of travel to work</b> |                            |              |                    |  |          |                              |
| Works mainly at or from home    | Public Transport           |              |                    | Bicycle                                | On Foot  | Other                        |
|                                 | Train                      | Bus etc      | Taxi               |  |          |                              |
| 330                             | 1,683                      | 8,169        | 202                | 232                                    | 2,393    | 68                           |
| By Car                          |                            |              |                    | Motorcycle etc                         |          |                              |
| As driver                       |                            | As passenger |                    |  |          |                              |
| 22,095                          |                            | 3,298        |                    | 243                                    |          |                              |

### By Local Authority

| Origin Local Authority | Total People travelling from Area | Distance Travelled (in Km) |         |
|------------------------|-----------------------------------|----------------------------|---------|
|                        |                                   | Average (mean)             | Maximum |
| Bradford               | 27,136                            | 12                         | 30      |
| Leeds                  | 3,807                             | 13                         | 28      |
| Calderdale             | 2,649                             | 11                         | 26      |
| Kirklees               | 2,119                             | 23                         | 39      |
| Harrogate              | 586                               | 28                         | 45      |
| Craven                 | 338                               | 26                         | 61      |
| Wakefield              | 320                               | 33                         | 43      |
| Hambleton              | 146                               | 48                         | 56      |
| Middlesbrough          | 97                                | 48                         | 60      |
| York                   | 91                                | 33                         | 40      |
| Pendle                 | 73                                | 80                         | 125     |
| Burnley                | 73                                | 28                         | 32      |
| Blyth Valley           | 73                                | 40                         | 52      |
| Halton                 | 70                                | 51                         | 59      |
| Manchester             | 58                                | 12                         | 30      |

Of the people who travel to work from the City, over 44.5% travel by car (36.7% as drivers and 0.1% as passengers), 1.4% by motorcycle and 0.5% travel by other means (including train, buses, taxis, bicycle, on foot and other modes). The remaining 7.6% work predominantly from home.

Over 89% more people travel to the City than those that travel from the City.

Of the people who travel to work in the City, over 65.5% travel by car (57% as drivers and 8.5% as passengers), 0.6% by motorcycle and 32.9% travel by other means (including train, buses, taxis, bicycle, on foot and other modes). The remaining 0.8% of people work predominantly from home.

## Indices of Deprivation 2004 (ID2004)

The Index of Multiple Deprivation 2004 (IMD 2004) is a Super Output Area (SOA) level measure of multiple deprivation. England is divided into 32,482 SOAs, which are small areas containing an average of 1,500 residents. The IMD 2004 project gives a score and rank to each SOA for seven areas of deprivation:

- Income deprivation
- Employment deprivation
- Health deprivation and disability
- Education, skills and training deprivation
- Barriers to Housing and Services
- Living environment deprivation
- Crime

Also, each SOA has been given an overall score and rank which takes into account all seven indices, and this is known as the Index of Multiple Deprivation 2004.

Ranks vary from 1 to 32,482, with 1 being the most deprived. Higher scores indicate that areas are more deprived. When comparing the deprivation of different areas, it is better to look at the rank than the score. Bradford Council has been able to use the Maps and Stats web-based GIS system ([www.mapsandstats.com](http://www.mapsandstats.com)) to combine scores for the SOAs that fall within the wards, and hence estimate the Indices of Deprivation at ward level.

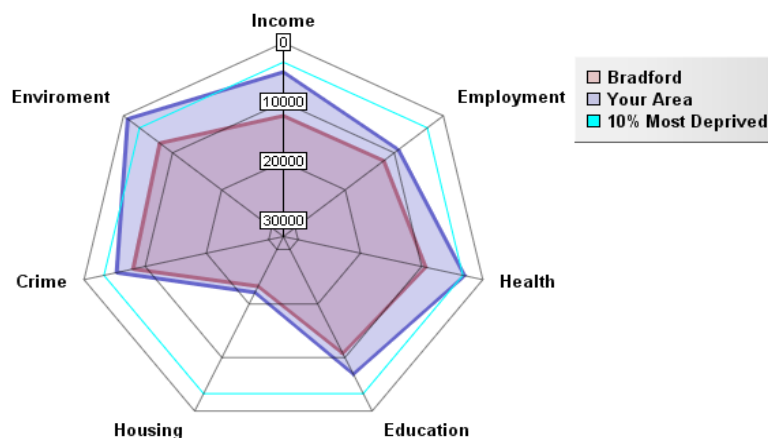
### Index of Multiple Deprivation 2004

|                             | ID 2004 Overall Rank (Average) | ID 2004 Overall Score |
|-----------------------------|--------------------------------|-----------------------|
| E01008228 in Gateshead LA   | 3590                           | 43.71                 |
| <b>City Ward</b>            | <b>3590.79</b>                 | <b>47.42</b>          |
| E01015725 in Luton LA       | 3591                           | 43.7                  |
| <b>Average for Bradford</b> | <b>10656.03</b>                | <b>32.93</b>          |

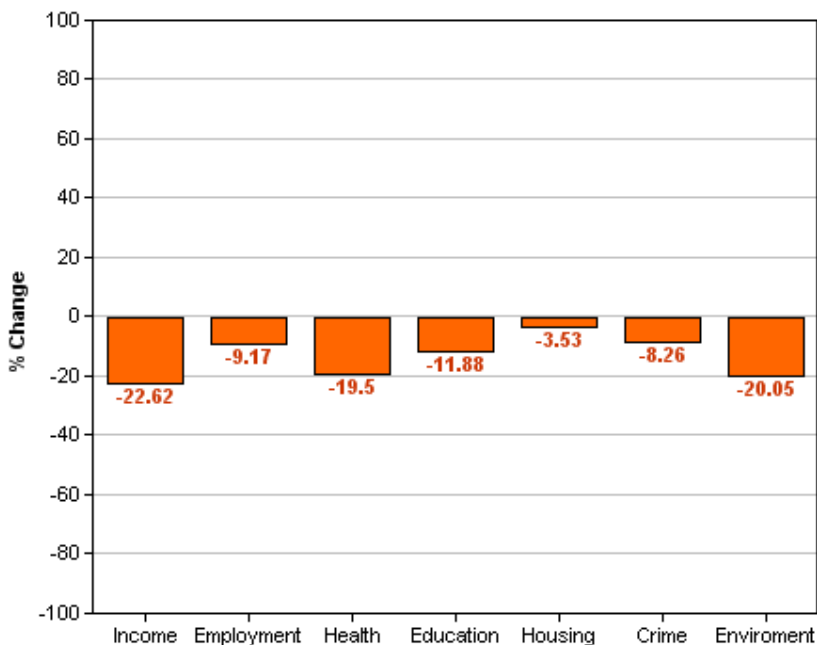
This table shows the average ranks and scores for the City ward. The rows above and below City show which SOAs in England have the most similar ranks to this ward, and are therefore considered to have the most similar levels of deprivation. It is important to note, however, that these areas may be deprived for different reasons.

### Area Rank against Average Bradford Rank

The following radar graph and bar chart indicate that the City ward is significantly more deprived compared to the rest of the District on all domain indices of deprivation. Only in the Housing domain of the Index of Deprivation 2004 is City at a similar level of deprivation to that of the Bradford District, although this is likely to reflect the low level of deprivation within Bradford for this domain. This is due mainly to the urban nature of Bradford, which means that there are amenities relatively close to where people live and is not necessarily due to a high standard of house stock. The difference between the Bradford District average and City is greatest for Income (-22.6), Environment (-22.0), Health (-19.5) and Education (-11.8). This indicates that on Income, Environment, Health and Education the City Ward is significantly more deprived compared to the rest of the district. Health domains for the City Ward indicate they fall into the 10% most deprived areas in the district. The City Ward is most deprived on the Environment domain, which falls into the 3% most deprived area for the district. Overall City is significantly deprived with only Housing being slightly above that of the Bradford District average.



## Percentage Difference between Area Rank and Average Bradford Rank



### Other dataset currently being investigated/acquired

#### Health

Low birth weight  
 Death Rates  
 Smoking attributable health admissions  
 Perception Surveys (Speak-out)

#### Education

%5 A – C GCSE's (Inc. Maths and English)  
 Key Stage Results  
 Adult qualifications  
 Truancy

#### Economy

Benefit measures & Incapacity benefit  
 Income levels (Household)  
 NEET's  
 Business start-up survival rates

#### Crime

Criminal damage  
 Burglary  
 ASB (Needs clarifying)  
 Youth offending  
 Road traffic accidents (RTA)


#### Liveability

House prices  
 Void properties  
 Cleanliness  
 Open spaces  
 Housing condition

#### Stronger Communities

Voting rates

**Plus many other council datasets as they become available through the GIS strategy.**

|   |  |
|---|--|
|  | <p>All 30 Ward profiles and supplements can be found at:<br/> <a href="http://www.bradfordinfo.com/census/WardProfiles.cfm">http://www.bradfordinfo.com/census/WardProfiles.cfm</a></p> <p>This bulletin was produced by the <b>Research and Consultation Service</b>,<br/>             City of Bradford Metropolitan District Council.<br/>             Email: <a href="mailto:stephen.elves@bradford.gov.uk">stephen.elves@bradford.gov.uk</a> Tel: 01274 43 7269<br/>             August 2007</p> |
|---|--|