

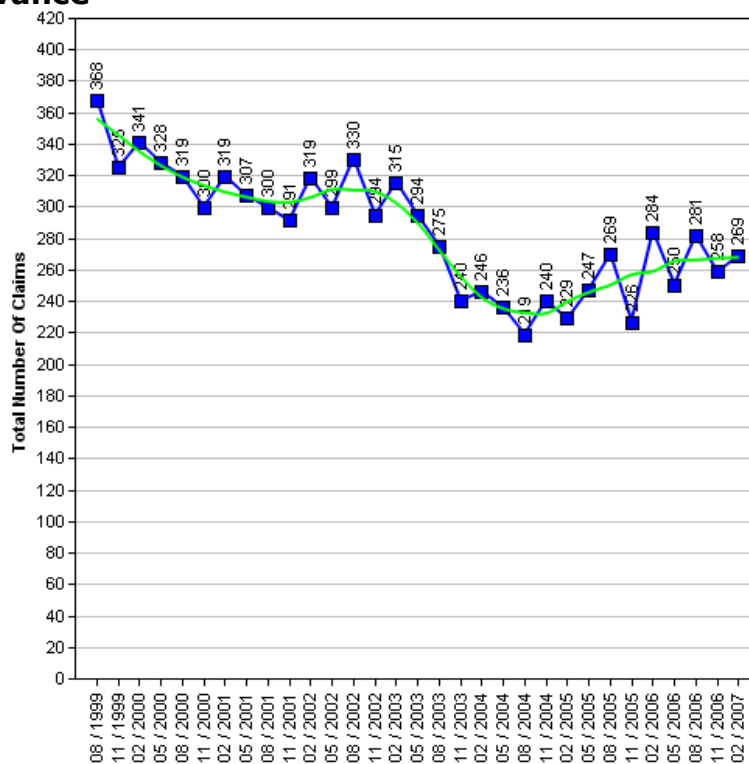
Clayton & Fairweather Green Ward Profile Supplement

The Census is a survey of all people and households in the country that takes place every 10 years. The Census was last carried out in 2001, with results published in 2003. The next Census is due in 2010, with results expected in 2013. Consequently the actual data cannot be updated in intervening years.

Work has been underway for some time to produce a range of alternative datasets for Bradford to supplement the 2001 Census data with more current and relevant information, which will better describe conditions and progress across the District. This supplement provides a taster of that work.

It is the intention to consult Elected Members on themes and priorities. Regular data updates will then be incorporated into the intranet 'Members Information System' supported by improved analysis and narrative. Periodic snapshots in paper document form will continue to be available.

Job Seekers Allowance



The 1991 to 2006 Job Seekers Allowance data give an insight into the number of claimants under pensionable age who are available for, and actively seeking work of at least 40 hours a week.

Job Seekers Allowance Claimants

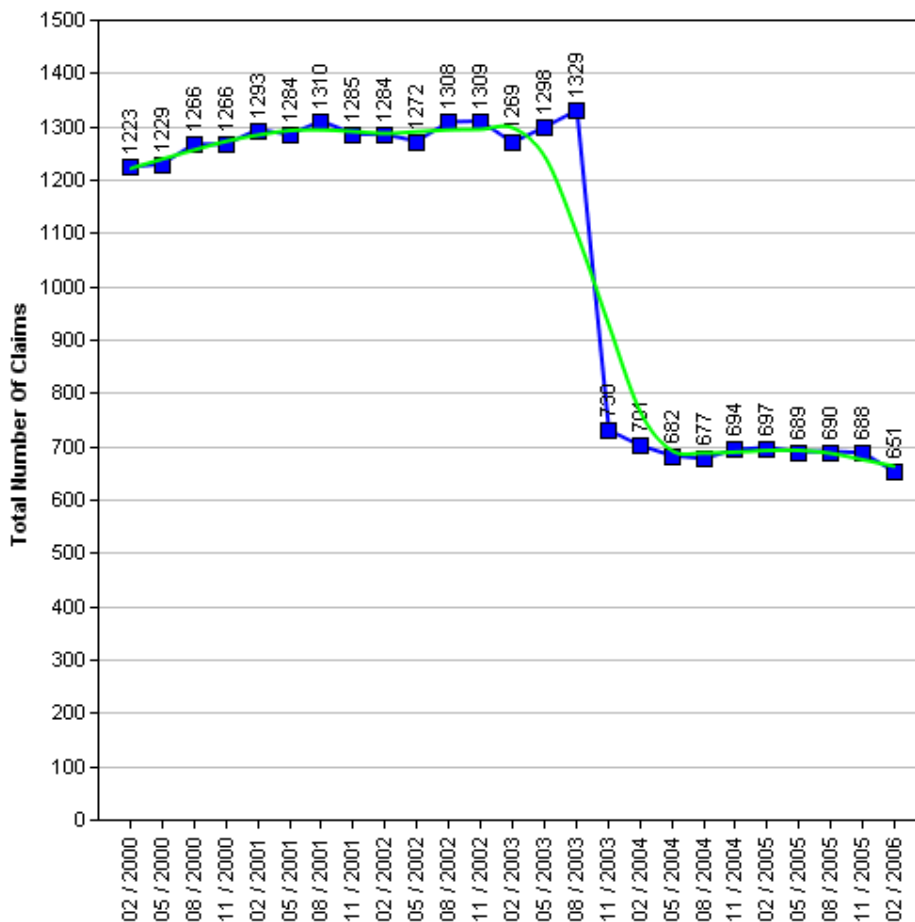
	1999	2000	2001	2002	2003	2004	2005	2006	2007
Quarter (February)	-	341	319	319	315	246	229	284	269
Quarter (May)	-	328	307	299	294	236	247	250	-
Quarter (August)	368	319	300	330	275	219	269	281	-
Quarter (November)	325	300	291	294	240	240	226	258	-



Income Support

The 2000 to 2006 Income Support data give an insight into the number of claimants between the age of 16-59 who have a low income, don't have savings of £16,000 or more, are not working, work on average less than 16 hours a week, or are unable to work because they are:

- A Lone parent
- Registered sick or disabled
- A student and either a lone parent or disabled
- Or caring for someone who is sick or elderly



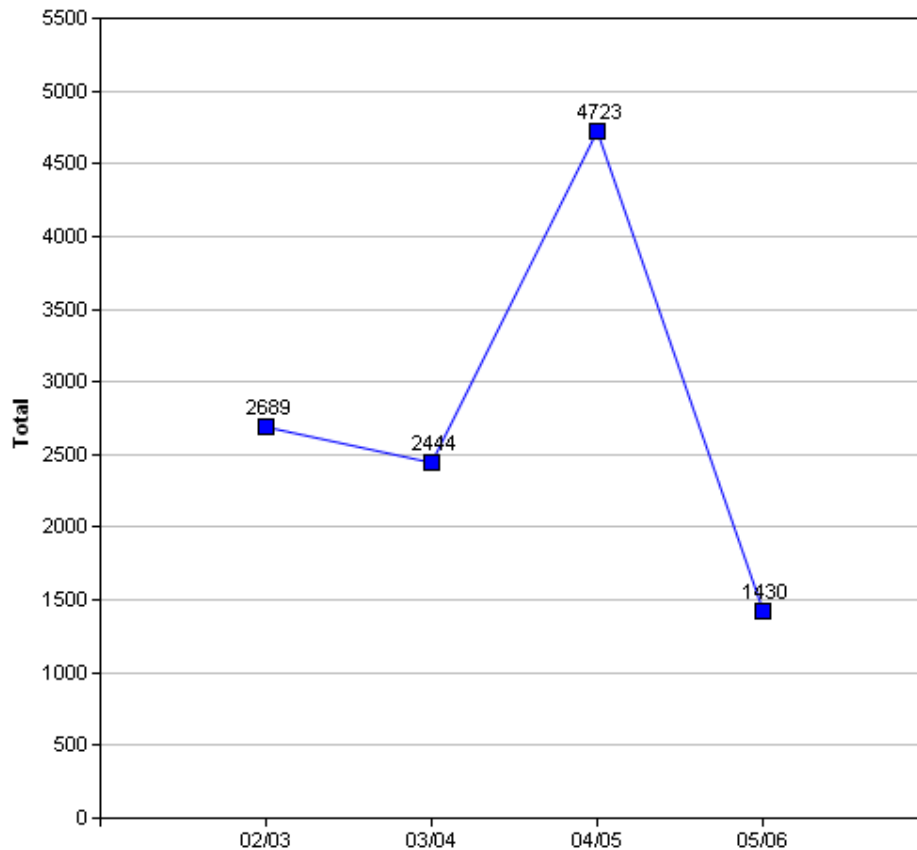
WARNING: In the Income Support table there is a drop in the number of claimants between the months of August 2003 and November 2003. The explanation for this is because "from October 2003, Income Support for pensioners was replaced by 'Pension Credit'." (Source: www.mind.org.uk).

Income Support Claimants

	2000	2001	2002	2003	2004	2005	2006
Quarter 1 (February)	1,223	1,293	1,284	1,269	701	697	651
Quarter 2 (May)	1,229	1,284	1,272	1,298	682	689	-
Quarter 3 (August)	1,266	1,310	1,308	1,329	677	690	-
Quarter 4 (November)	1,266	1,285	1,309	730	694	688	-

Crime

The Crime Data is based on the Crime Domain from the Indices of Deprivation 2004. The Crime Domain consists of 33 categories of recorded crime which are then grouped to form 4 composite indicators: burglary, criminal damage, theft and violence. This report gives an insight into the number of offences committed within the selected area and compares this with the Bradford district. The data is displayed for each year by composite indicator.

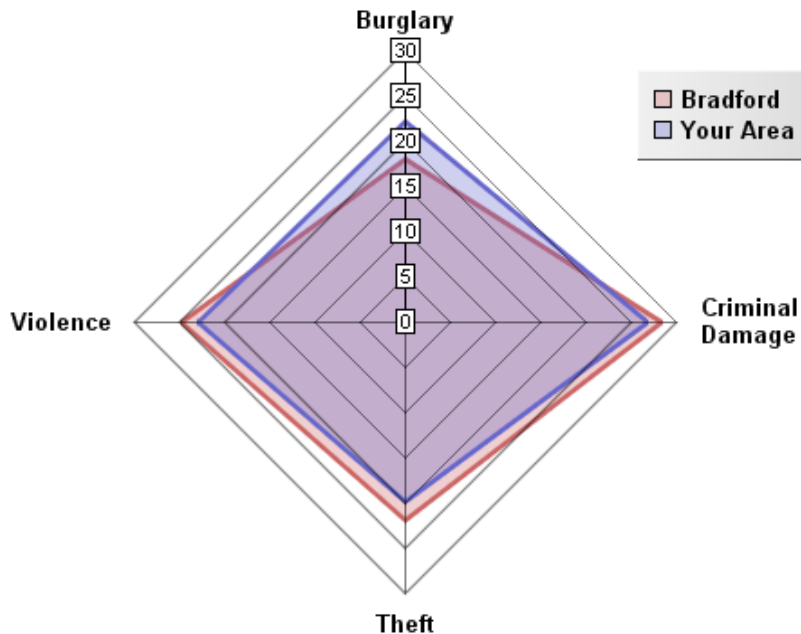


Overall Crimes per Year

Year	Selected Area			Bradford District		
	No.Offences	Change	% Change	No.Offences	Change	% Change
2002/03	2,689			49,264		
2003/04	2,444	-245	-9.1%	48,973	-291	-0.6%
2004/05	4,723	2,279	93.2%	40,747	-8,226	-16.8%
2005/06	1,430	-3,293	-69.7%	43,562	+2,815	+6.9%

The pattern of crime in the Clayton & Fairweatether Green Ward does not seem to have followed the district trend. In 2004/05 numerous district wide initiatives from West Yorkshire Police and the District Crime and Disorder Reduction Partnership yielded significant reductions in crime across most categories and geographical areas. Enquiries with West Yorkshire Police into the apparent 93.2% increase in 2004/05 suggest that there is an issue with the data for this Ward for this period. There has been a 40.7% decrease in crime between 2002 and 2006 for your area, which suggests that the large increase in 2004/05 may be a false increase. It is important to note that ID2004 Crime Domain definition of crime is limited to a subset of crime. A more accurate picture can be obtained by looking at Overall Crime Levels in the district.

05/06 Comparison with District (Rate per 1000 population)

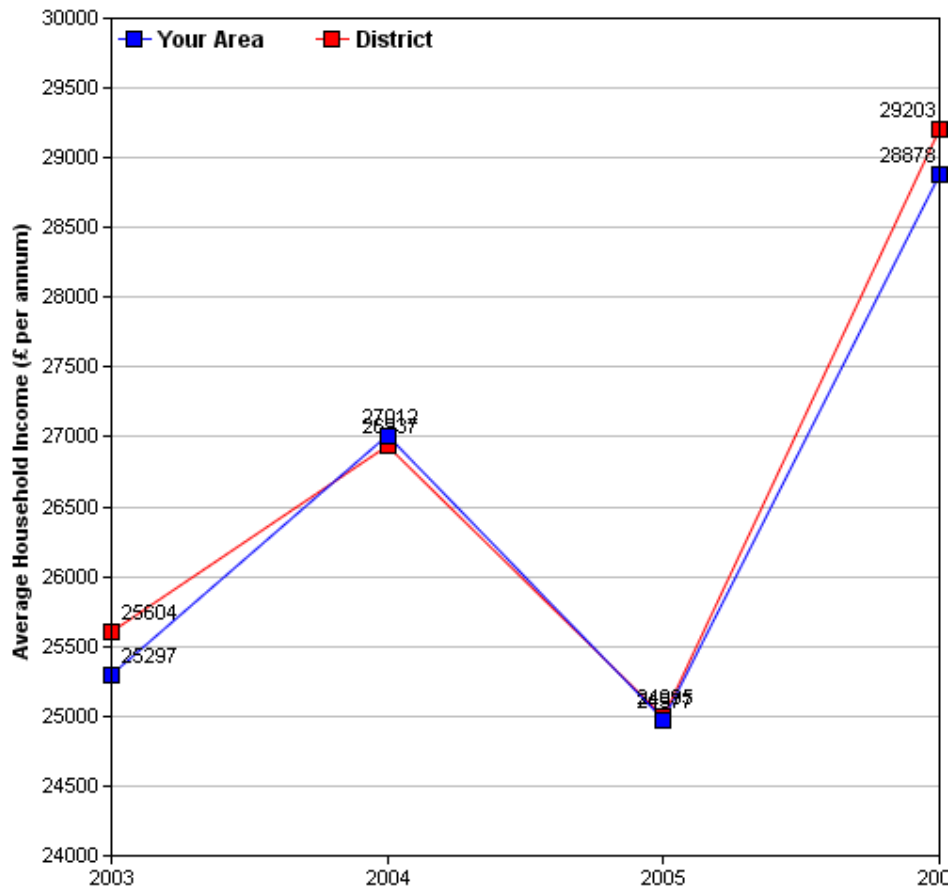


The above crime radar graph compares four variables of crime, per thousand population for your area, with that of the Bradford district. The pink line indicates the Bradford District rate and the blue line represents the rate for your area. The radar graph allows us to see that three crime variables in your area are below those of the district average for Violence, Criminal Damage and Theft. The radar graph also allows you to see which crime variables are closer or further from the district rate, by comparing the gap between the blue and pink lines. Burglary (22.5 per thousand population) for your area is well above that of the district rate (17.5 per thousand population). Criminal damage, theft and Violent crime are all slightly below that of the district average for your area, as the gap between the pink and blue lines are shortest for these variables. Overall, crime rates for Clayton and Fairweather Green are similar to those of the Bradford average, except for Burglary. This reflects the deprivation profile for this ward that is similar to the Bradford District average for most of the deprivation indices.

Income

Information relating to income is derived from data supplied by CACI called 'PayCheck', which provides estimates of mean household income for every postcode in the UK. Unfortunately, it is not possible to use PayCheck data to examine changes in income over time, due to changes in data collection methods. However, it is possible to compare figures from different geographic areas (i.e. Ward and District) for the same time period, as they are derived using the same data collection method.

(For more information on PayCheck data please see www.caci.co.uk.)



Overall Income by Year

	2003	2004	2005	2006
Mean per Annum	£25,296.80	£27,011.79	£24,976.72	£28,877.74
Mean per Annum (District)	£25,604.05	£26,936.70	£24,995.30	£29,203.12

Ethnic Diversity

This data comes from the 1991 and 2001 Census and shows the diversity of ethnic groups within the Bradford District. By comparing the 1991 Census with the 2001 Census we are able to compare the area over time. The Clayton and Fairweather ward appears to have become more diverse.

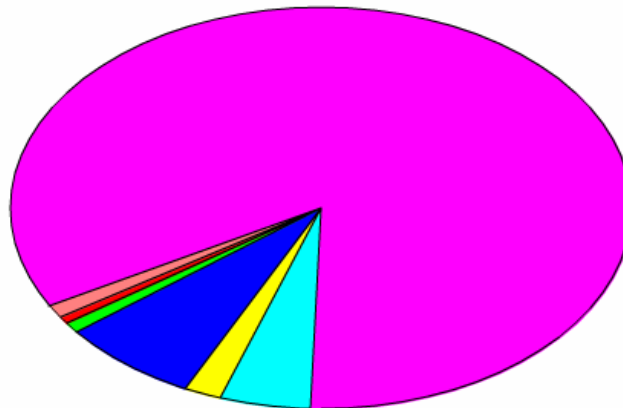
Ethnic Diversity 1991

	Number	Percentage
White	13,168	92.5 %
Asian	796	5.6 %
Black	130	0.9 %
Other	144	1.0 %

Ethnic Diversity 2001

	Number	Percentage
White	13,023	83.5 %
Mixed	296	1.9 %
Asian	1,940	12.4 %
Black	149	1.0 %
Other	189	1.2 %

Bangladeshi	93(1%)
Black or Black British	149(1%)
Indian	1,129(7%)
Mixed(1)	295(2%)
Pakistani	715(5%)
White	13,023(84%)
Other ethnic group	189(1%)



Travel to Work (Census 2001)

This data comes from the 2001 Census. It has details about the people who travel to and from the area to go to work, and their method of getting there.

Travel from Clayton & Fairweather

Total

Total People travelling from Area	Distance Travelled (in Km)					
	Average (mean)	Maximum	Standard Deviation	Standard Deviation (of the population)	Variance	Variance (of the population)
6,855	8	415	29	29	856,794	856,732
Method of travel to work						
Works mainly at or from home	Public Transport			Bicycle	On Foot	Other
	Train	Bus etc	Taxi			
474	82	981	64	60	556	15
By Car				Motorcycle etc		
As driver		As passenger				
3,915		660		42		

By Local Authority

Destination Local Authority	Total People travelling from Area	Distance Travelled (in Km)	
		Average (mean)	Maximum
Bradford	5,677	3	16
Leeds	533	16	32
Kirklees	223	8	21
Calderdale	163	13	23
Wakefield	54	26	40
Harrogate	26	21	49
Craven	12	36	43
York	12	49	51
Sheffield	9	52	53
Pendle	9	33	44
Hillingdon	9	29	29
Barnsley	6	28	29
Angus	6	288	288
City of London	6	91	93
Manchester	6	279	280

Travel to Clayton & Fairweather

Totals

Total People travelling to Area	Distance Travelled (in Km)					
	Average (mean)	Maximum	Standard Deviation	Standard Deviation (of the population)	Variance	Variance (of the population)
3,211	6	305	22	22	478,932	478,869
Method of travel to work						
Works mainly at or from home	Public Transport			Bicycle	On Foot	Other
	Train	Bus etc	Taxi			
474	6	318	18	21	424	12

By Car		Motorcycle etc
As driver	As passenger	
1.601	314	22

By Local Authority

Origin Local Authority	Total People travelling from Area	Distance Travelled (in Km)	
		Average (mean)	Maximum
Bradford	2,843	3	19
Leeds	123	14	25
Calderdale	76	9	16
Kirklees	64	15	28
Harrogate	22	25	34
Craven	15	43	53
Wakefield	10	20	35
Hambleton	6	27	30
Middlesbrough	6	31	31
York	6	52	53
Pendle	3	298	305
Burnley	3	104	104
Blyth Valley	3	78	78
Halton	3	276	276
Manchester	3	57	57

Of the people who travel to work from Clayton and Fairweather, over 66.7% travel by car (57.1% as drivers and 9.6% as passengers), 0.01% by motorcycle and 0.3% travel by other means (including train, buses, taxis, bicycle, on foot and other modes). The remaining 6.9% work predominantly from home.

Over 53% more people travel from Clayton and Fairweather than those that travel to Clayton and Fairweather.

Of the people who travel to work in Heaton, over 9.7% travel by car (5% as drivers and 4.7% as passengers), 0.7% by motorcycle and 24.3% travel by other means (including train, buses, taxis, bicycle, on foot and other modes). The remaining 65.3% work predominantly from home.

Indices of Deprivation 2004 (ID2004)

The Index of Multiple Deprivation 2004 (IMD 2004) is a Super Output Area (SOA) level measure of multiple deprivation. England is divided into 32,482 SOAs, which are small areas containing an average of 1,500 residents. The IMD 2004 project gives a score and rank to each SOA for seven areas of deprivation:

- Income deprivation
- Employment deprivation
- Health deprivation and disability
- Education, skills and training deprivation
- Barriers to Housing and Services
- Living environment deprivation
- Crime

Also, each SOA has been given an overall score and rank which takes into account all seven indices, and this is known as the Index of Multiple Deprivation 2004.

Ranks vary from 1 to 32,482, with 1 being the most deprived. Higher scores indicate that areas are more deprived. When comparing the deprivation of different areas, it is better to look at the rank than the score. Bradford Council has been able to use the Maps and Stats web-based GIS system (www.mapsandstats.com) to combine scores for the SOAs that fall within the wards, and hence estimate the Indices of Deprivation at ward level.

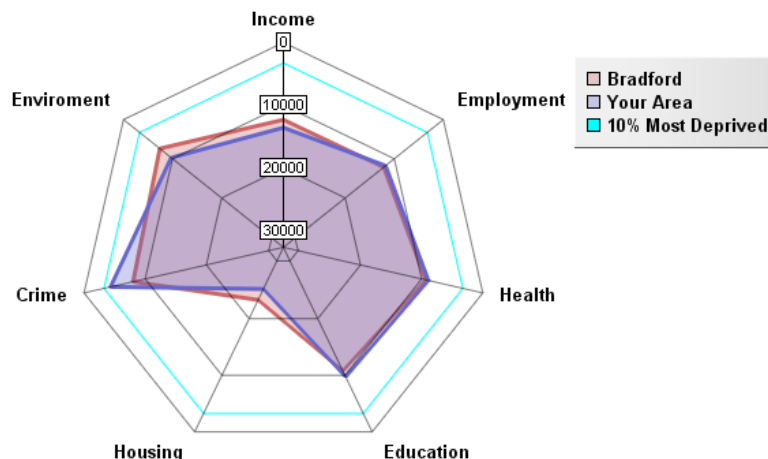
Index of Multiple Deprivation 2004

	ID 2004 Overall Rank (Average)	ID 2004 Overall Score
E01014586 in Bristol, City of LA	10413	25.35
Clayton and Fairweather Green Ward	10413.38	28.95
E01006529 in Liverpool LA	10414	25.35
Average for Bradford	10656.03	32.93

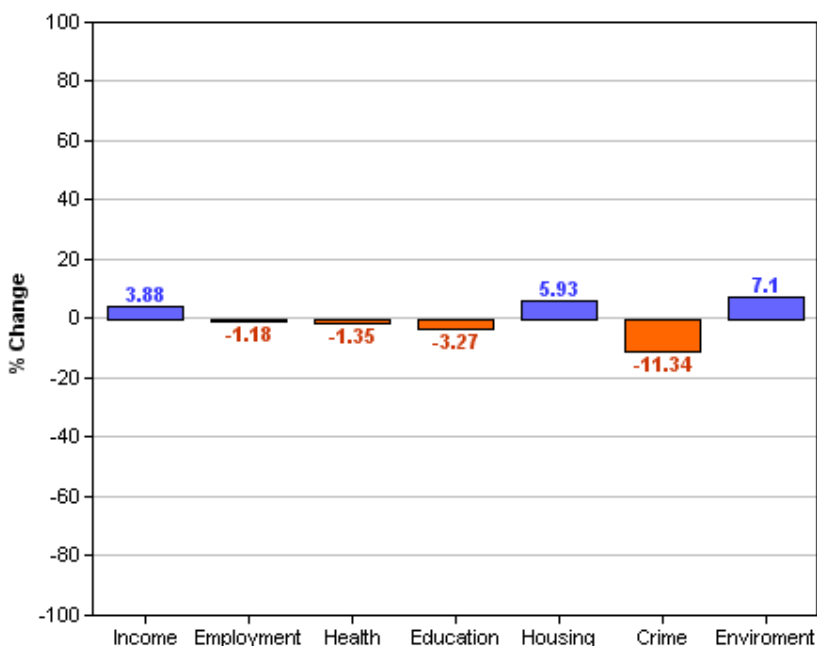
This table shows the average ranks and scores for the Clayton and Fairweather ward. The rows above and below Clayton and Fairweather show which SOAs in England have the most similar ranks to this ward, and are therefore considered to have the most similar levels of deprivation. It is important to note, however, that these areas may be deprived for different reasons.

Area Rank against Average Bradford Rank

The following radar graph and bar chart indicate that the Clayton and Fairweather Green ward has slightly higher levels of deprivation compared to the rest of the District on Education (-3.2), Health (-1.3), Employment (-1.1) and Education domains. Only in the Crime domain of the Index of Deprivation 2004 is Clayton and Fairweather Green experiencing greater levels of deprivation than the Bradford District average (-11.3). The difference between the Bradford District average and Clayton and Fairweather Green ward is greatest for Environment (7.1.) Housing (5.9) and Income (3.8). This indicates that on Income, Environment and Housing domains Clayton and Fairweather Green is less deprived compared to the rest of the district. Overall, the Clayton and Fairweather Green ward has similar levels of deprivation to that of the district average, except for Crime, which is significantly more deprived than the Bradford District.



Percentage Difference between Area Rank and Average Bradford Rank



Other dataset currently being investigated/acquired:

Health

Low birth weight
 Death Rates
 Smoking attributable health admissions
 Perception Surveys (Speak-out)

Education

%5 A – C GCSE's (Inc. Maths and English)
 Key Stage Results
 Adult qualifications
 Truancy

Economy

Benefit measures & Incapacity benefit
 Income levels (Household)
 NEET's
 Business start-up survival rates

Crime

Criminal damage
 Burglary
 ASB (Needs clarifying)
 Youth offending
 Road traffic accidents (RTA)


Liveability

House prices
 Void properties
 Cleanliness
 Open spaces
 Housing condition

Stronger Communities

Voting rates

Plus many other council datasets as they become available through the GIS strategy.

	<p>All 30 Ward profiles and supplements can be found at: http://www.bradfordinfo.com/census/WardProfiles.cfm</p> <p>This bulletin was produced by the Research and Consultation Service, City of Bradford Metropolitan District Council. Email: stephen.elves@bradford.gov.uk Tel: 01274 43 7269 August 2007</p>
---	--