

## Eccleshill Ward Profile Supplement

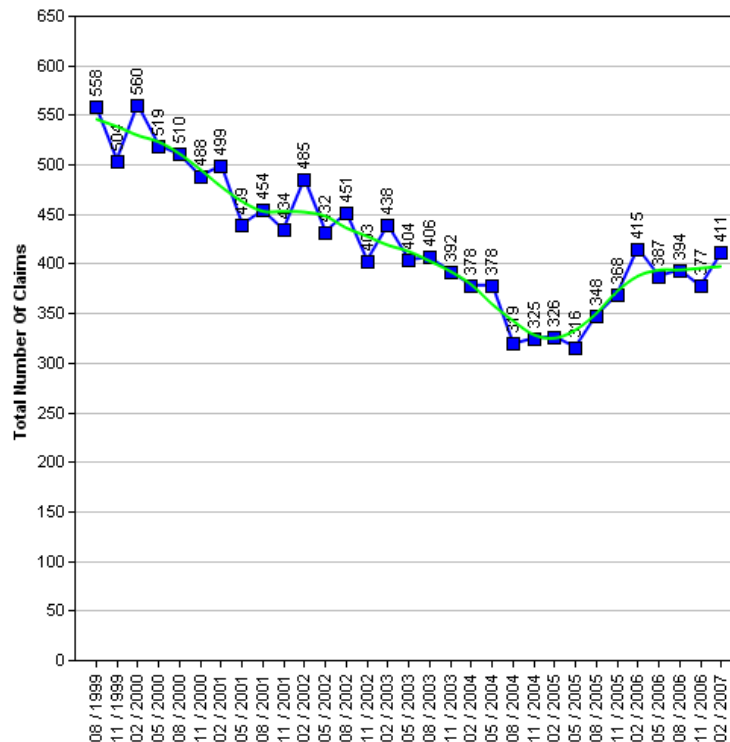
The Census is a survey of all people and households in the country that takes place every 10 years. The Census was last carried out in 2001, with results published in 2003. The next Census is due in 2010, with results expected in 2013. Consequently the actual data cannot be updated in intervening years.

Work has been underway for some time to produce a range of alternative datasets for Bradford to supplement the 2001 Census data with more current and relevant information, which will better describe conditions and progress across the District. This supplement provides a taster of that work.

It is the intention to consult Elected Members on themes and priorities. Regular data updates will then be incorporated into the intranet 'Members Information System' supported by improved analysis and narrative. Periodic snapshots in paper document form will continue to be available.

### Job Seekers Allowance

The 1991 to 2006 Job Seekers Allowance data give an insight into the number of claimants under pensionable age who are available for, and actively seeking work of at least 40 hours a week.



### Job Seekers Allowance Claimants

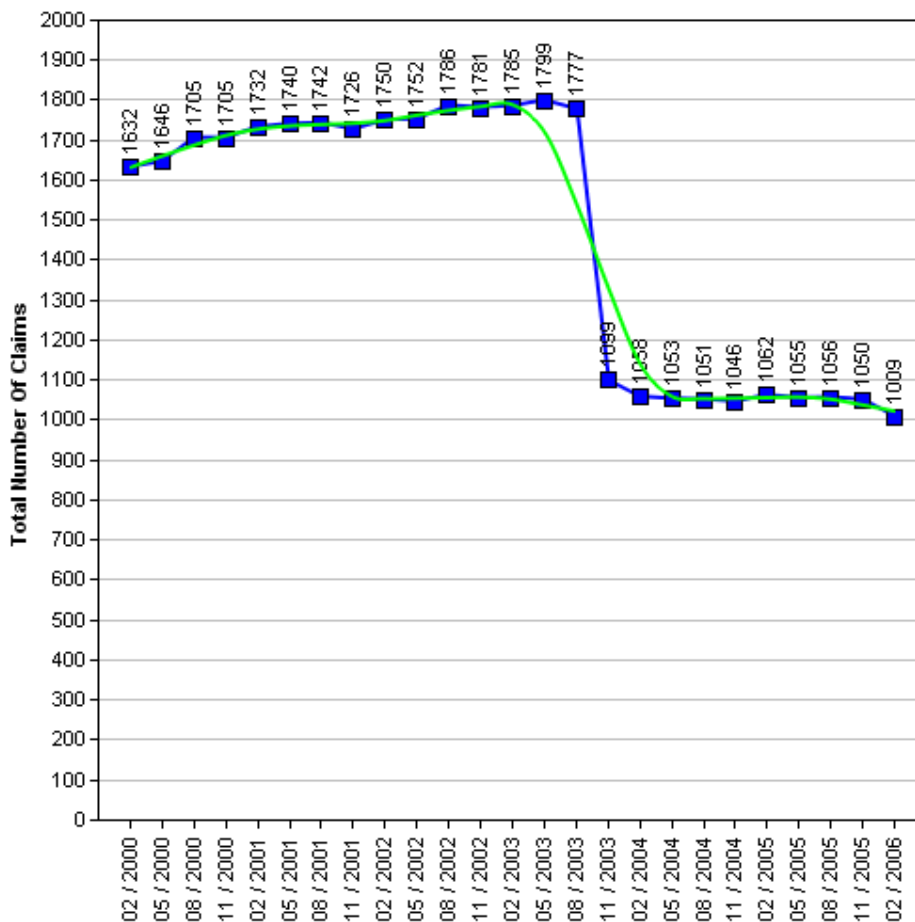
	1999	2000	2001	2002	2003	2004	2005	2006	2007
Quarter 1 (February)		560	499	485	438	378	326	415	411
Quarter 2 (May)		519	439	432	404	378	316	387	
Quarter 3 (August)	558	510	454	451	406	319	348	394	
Quarter 4 (November)	504	488	434	403	392	325	368	377	



## Income Support

The 2000 to 2006 Income Support data give an insight into the number of claimants between the age of 16-59 who have a low income, don't have savings of £16,000 or more, are not working, work on average less than 16 hours a week, or are unable to work because they are:

- A Lone parent
- Registered sick or disabled
- A student and either a lone parent or disabled
- Or caring for someone who is sick or elderly



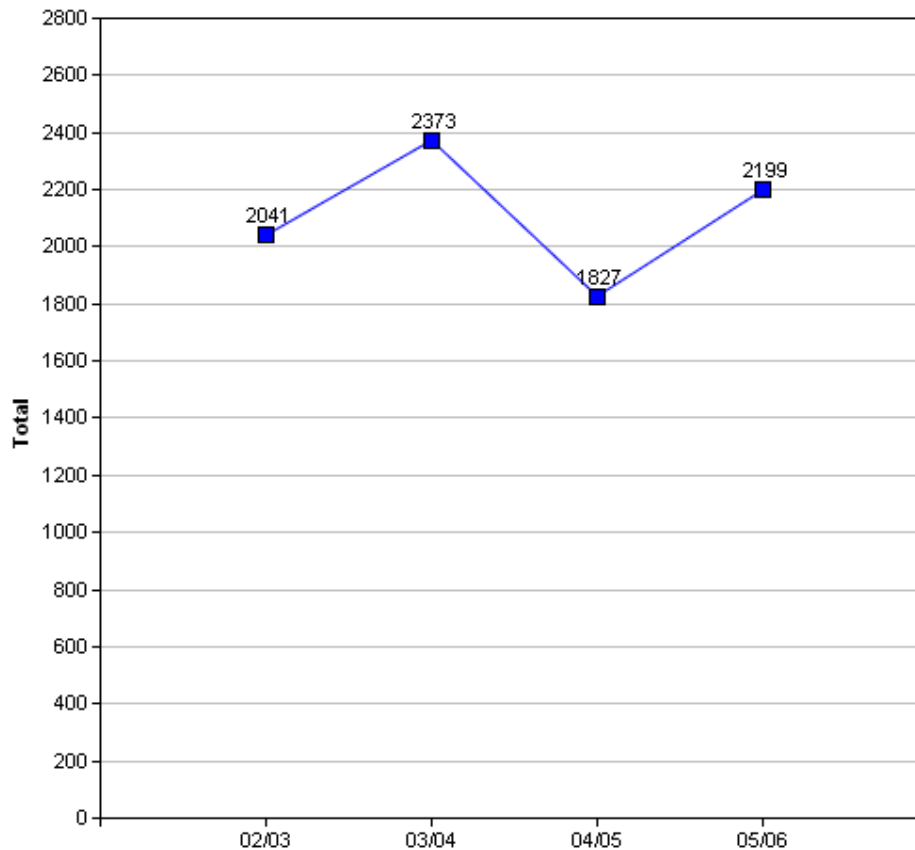
**WARNING:** In the Income Support table there is a drop in the number of claimants between the months of August 2003 and November 2003. The explanation for this is because "from October 2003, Income Support for pensioners was replaced by 'Pension Credit'" (Source: [www.mind.org.uk](http://www.mind.org.uk)).

### Income Support Claimants

	2000	2001	2002	2003	2004	2005	2006
Quarter 1 (February)	1,632	1,732	1,750	1,785	1,058	1,062	1,009
Quarter 2 (May)	1,646	1,740	1,752	1,799	1,053	1,055	-
Quarter 3 (August)	1,705	1,742	1,786	1,777	1,051	1,056	-
Quarter 4 (November)	1,705	1,726	1,781	1,099	1,046	1,050	-

## Crime

The Crime data is based on the Crime Domain from the Indices of Deprivation 2004. The Crime Domain consists of 33 categories of recorded crime which are then grouped to form 4 composite indicators: burglary, criminal damage, theft and violence. This report gives an insight into the number of offences committed within the selected area and compares this with the Bradford district. The data is displayed for each year by composite indicator.



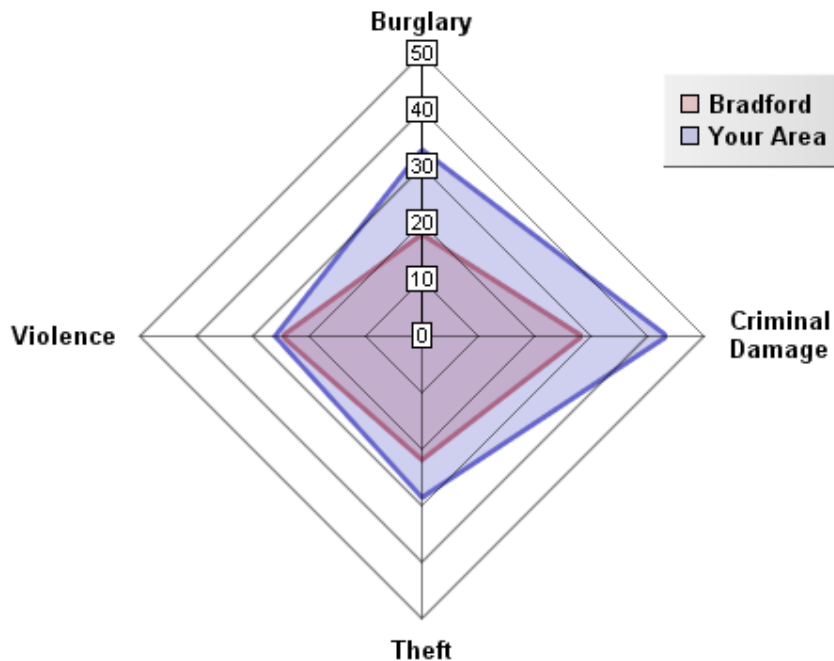
### Overall Crimes per Year

Year	Selected Area			Bradford District		
	No.Offences	Change	% Change	No.Offences	Change	% Change
2002/03	2,041			49,264		
2003/04	2,373	+332	+16.3%	48,973	-291	-0.6%
2004/05	1,827	-546	-23.0%	40,747	-8,226	-16.8%
2005/06	2,199	+372	+20.4%	43,562	+2,815	+6.9%

In 2004/05 the number of offences decreased significantly in your area by 23.0%, above that of the district average. This reduction has broadly followed a similar trend to the district. In 2004/05 numerous district wide initiatives from West Yorkshire Police and the District Crime and Disorder Reduction Partnership yielded significant reductions in crime across most categories. This was an exceptional year for crime reduction and such significant reductions have proven to be unsustainable in the following years. There has been an overall increase in offences in your area of 7.7% during the period of 2002 to 2006. This is due to there being unsustainably low levels of crime in the ward in 2002 and the significant increase in 2005/06.

It is important to note that ID2004 Crime Domain definition of crime is limited to a subset of crime. A more accurate picture can be obtained by looking at Overall Crime Levels in the district.

## 05/06 Comparison with District (Rate per 1000 population)

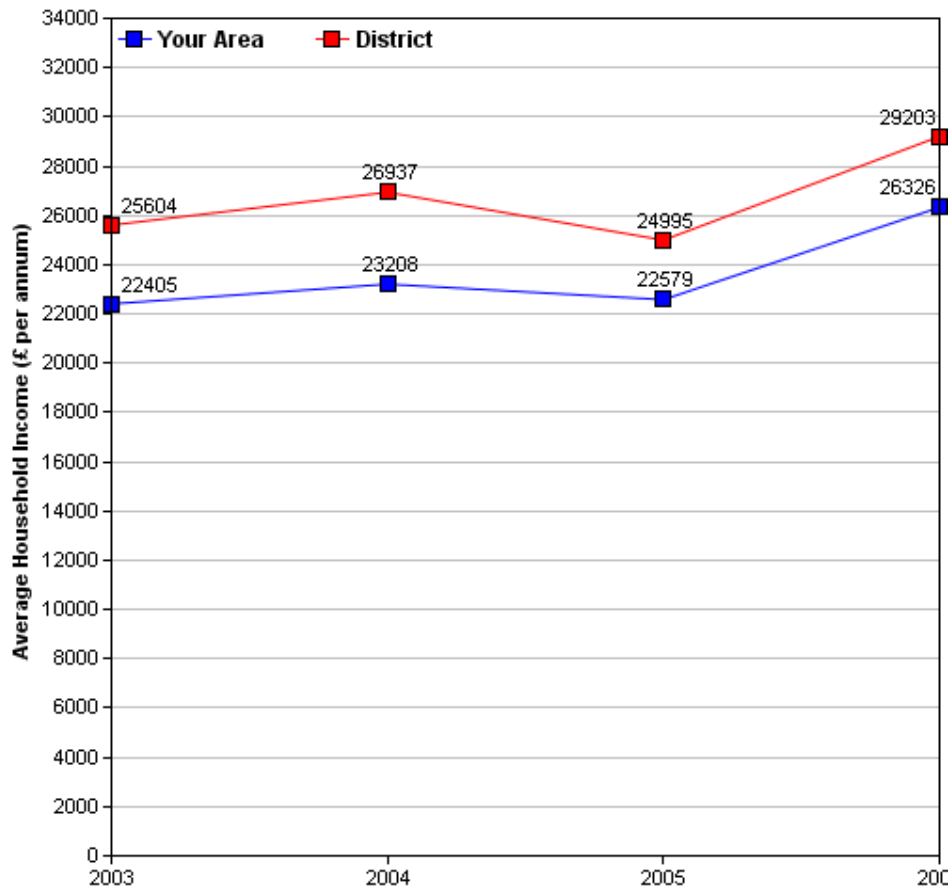


The above crime radar graph compares four variables of crime, per thousand population for your area, with that of the Bradford district. The pink line indicates the Bradford District average rate and the blue line represents the rate for your area. The radar graph allows us to see that all four crime variables in your area are well above those of the district average. The radar map also allows you to see which crime variables are closer or further from the district rate, by comparing the gap between the blue and pink lines. The radar graph indicates that for your area Burglary, criminal damage and theft significantly exceed the District average. Only the violent crime variable is similar to that of the district average, as the gap between the pink and blue lines are shortest for this variable. The gaps between the district rate and your area are longer for Burglary and criminal damage, indicating more frequency of these crimes per thousand population in your area compared to the district rate. High crime levels for the Eccleshill ward reflect the general higher deprivation and unemployment levels of the ward.

## Income

Information relating to income is derived from data supplied by CACI called 'PayCheck', which provides estimates of mean household income for every postcode in the UK. Unfortunately, it is not possible to use PayCheck data to examine changes in income over time, due to changes in data collection methods. However, it is possible to compare figures from different geographic areas (i.e. Ward and District) for the same time period, as they are derived using the same data collection method.

(For more information on PayCheck data please see [www.caci.co.uk](http://www.caci.co.uk).)



### Overall Income by Year

	2003	2004	2005	2006
Mean per Annum	£22,405.81	£23,207.54	£22,579.28	£26,326.42
Mean per Annum (District)	£25,604.05	£26,936.70	£24,995.30	£29,203.12

## Ethnic Diversity

This data comes from the 1991 and 2001 Censuses and shows the diversity of ethnic groups within the Bradford District. By comparing the 1991 Census with the 2001 Census we are able to compare the area over time. At both the 1991 (97%) and 2001 (94.8%) Census the Eccleshill ward was almost completely White.

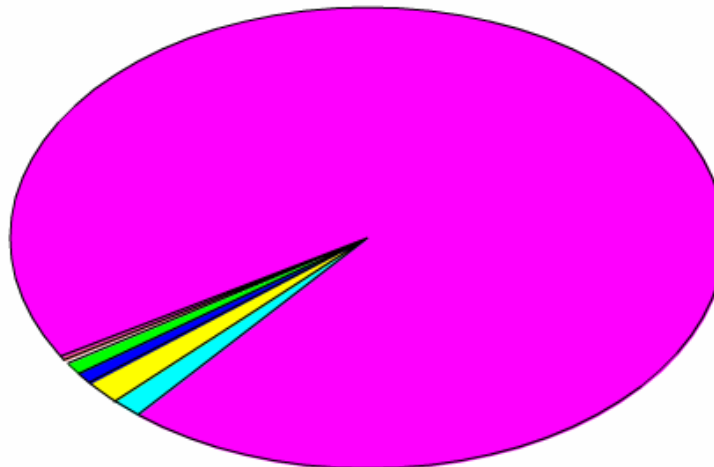
### Ethnic Diversity 1991

	Number	Percentage
White	18,573	97%
Asian	229	1.2%
Black	202	1.1%
Other	148	0.8%

### Ethnic Diversity 2001

	Number	Percentage
White	15,899	94.8%
Mixed	271	1.6%
Asian	381	2.3%
Black	157	0.9%
Other	67	0.4%

■ Bangladeshi	0(0%)
■ Black or Black British	157(1%)
■ Indian	150(1%)
■ Mixed(1)	270(2%)
■ Pakistani	229(1%)
■ White	15,898(95%)
■ Other ethnic group	67(0%)



## Travel to Work (Census 2001)

This data comes from the 2001 Census. It has details about the people who travel to and from the area to go to work, and their method of getting there.

### Travel from Eccleshill

#### Total

Total People travelling from Area	Distance Travelled (in Km)					
	Average (mean)	Maximum	Standard Deviation	Standard Deviation (of the population)	Variance	Variance (of the population)
7,059	6	339	20	20	395,636	395,606
<b>Method of travel to work</b>						
Works mainly at or from home	Public Transport			Bicycle	On Foot	Other
	Train	Bus etc	Taxi			
467	52	1,078	72	55	815	11
<b>By Car</b>		<b>Motorcycle etc</b>				
As driver	As passenger					
3,703	747	58				

#### By Local Authority

Destination Local Authority	Total People travelling from Area	Distance Travelled (in Km)	
		Average (mean)	Maximum
Bradford	5,637	3	19
Leeds	970	9	26
Kirklees	144	13	30
Calderdale	70	14	20
Wakefield	65	21	28
Harrogate	34	26	46
Craven	29	26	39
York	10	33	39
Sheffield	9	46	48
Pendle	8	151	156
Hillingdon	6	109	110
Barnsley	6	50	52
Angus	5	103	103
City of London	5	32	34
Manchester	3	32	34

## Travel to Eccleshill

### Total

Total People travelling to Area	Distance Travelled (in Km)					
	Average (mean)	Maximum	Standard Deviation	Standard Deviation (of the population)	Variance	Variance (of the population)
3,695	6	338	18	18	322,565	322,523
<b>Method of travel to work</b>						
Works mainly at or from home	Public Transport			Bicycle	On Foot	Other
	Train	Bus etc	Taxi			
467	15	292	40	40	646	3
<b>By Car</b>		<b>Motorcycle etc</b>				
As driver	As passenger					
1,850	315	25				

### By Local Authority

Origin Local Authority	Total People travelling from Area	Distance Travelled (in Km)	
		Average (mean)	Maximum
Bradford	3,098	3	19
Leeds	287	8	27
Calderdale	107	16	30
Kirklees	60	14	21
Harrogate	41	26	47
Craven	22	23	30
Wakefield	12	24	33
Hambleton	12	30	33
Middlesbrough	3	54	54
York	3	89	89
Pendle	3	62	62
Burnley	3	48	48
Blyth Valley	3	31	31
Halton	3	30	30
Manchester	3	89	89

Of the people who travel to work from Eccleshill, over 63% travel by car (52.5% as drivers and 0.1% as passengers), 8.2% by motorcycle and 0.3% travel by other means (including train, buses, taxis, bicycle, on foot and other modes). The remaining 6.6% work predominantly from home.

Over 48% more people travel from Eccleshill than those that travel to Eccleshill.

Of the people who travel to work in Eccleshill, over 58.6% travel by car (50.1% as drivers and 8.5% as passengers), 0.7% by motorcycle and 28% travel by other means (including train, buses, taxis, bicycle, on foot and other modes). The remaining 12.6% work predominantly from home.

## Indices of Deprivation 2004 (ID2004)

The Index of Multiple Deprivation 2004 (IMD 2004) is a Super Output Area (SOA) level measure of multiple deprivation. England is divided into 32,482 SOAs, which are small areas containing an average of 1,500 residents. The IMD 2004 project gives a score and rank to each SOA for seven areas of deprivation:

- Income deprivation
- Employment deprivation
- Health deprivation and disability
- Education, skills and training deprivation
- Barriers to Housing and Services
- Living environment deprivation
- Crime

Also, each SOA has been given an overall score and rank which takes into account all seven indices, and this is known as the Index of Multiple Deprivation 2004.

Ranks vary from 1 to 32,482, with 1 being the most deprived. Higher scores indicate that areas are more deprived. When comparing the deprivation of different areas, it is better to look at the rank than the score. Bradford Council has been able to use the Maps and Stats web-based GIS system ([www.mapsandstats.com](http://www.mapsandstats.com)) to combine scores for the SOAs that fall within the wards, and hence estimate the Indices of Deprivation at ward level.

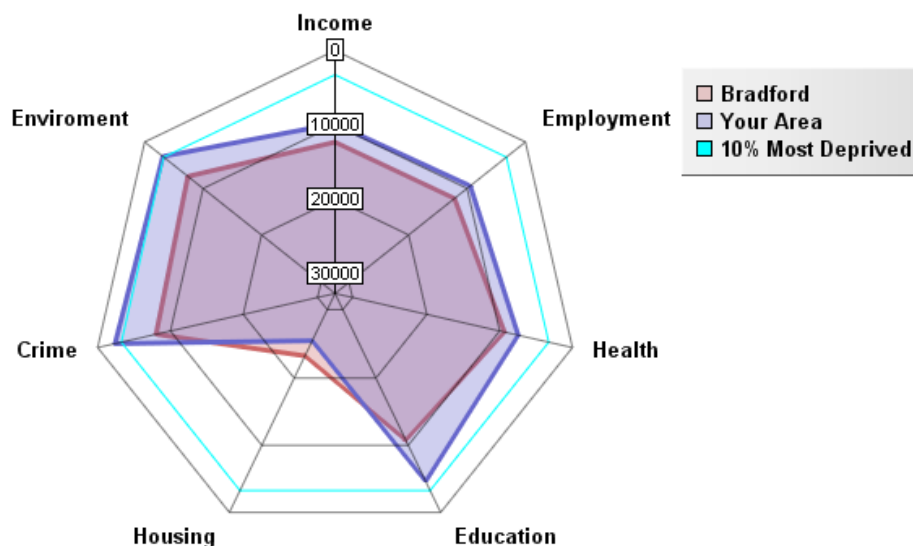
### Index of Multiple Deprivation 2004

	ID 2004 Overall Rank (Average)	ID 2004 Overall Score
E01010347 in Walsall LA	6400	34.5
<b>Eccleshill Ward</b>	<b>6400.08</b>	<b>40.3</b>
E01003164 in Lambeth LA	6401	34.49
<b>Average for Bradford</b>	<b>10656.03</b>	<b>32.93</b>

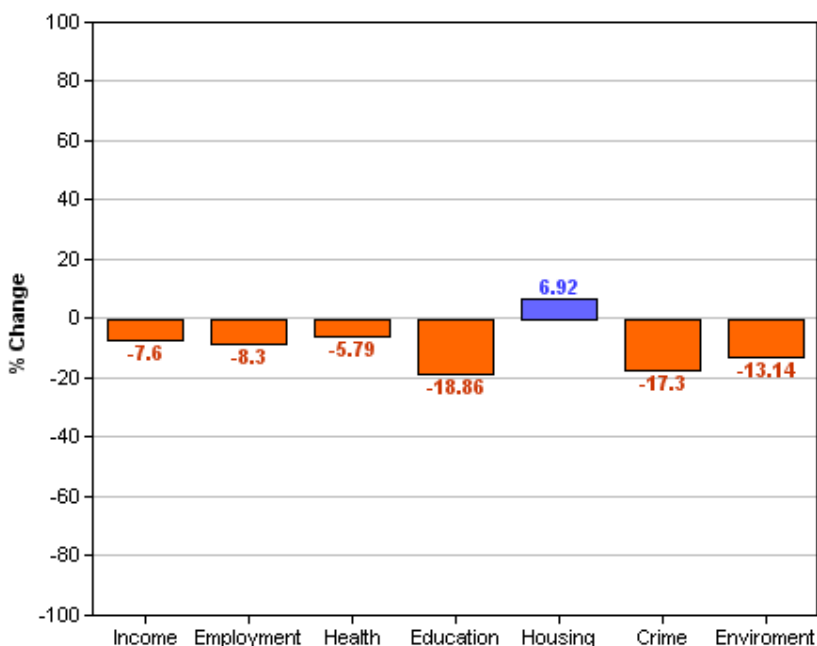
This table shows the average ranks and scores for the Eccleshill ward. The rows above and below Eccleshill show which SOAs in England have the most similar ranks to this ward, and are therefore considered to have the most similar levels of deprivation. It is important to note, however, that these areas may be deprived for different reasons.

### Area Rank against Average Bradford

The following radar graph and bar chart below indicates that your area has higher levels of deprivation for all domains, except housing, when compared to the Bradford Average. The percentage difference between your area and that of the Bradford District is greatest for Education (-18.8) and Crime (-17.3). This indicates that for your area, Education is significantly deprived when compared to the Bradford District average. Environment and Crime domains enter the 10% most deprived levels of deprivation for your area and the Bradford district.



## Percentage Difference between Area Rank and Average Bradford Rank



### Other dataset currently being investigated / acquired:

#### Health

Low birth weight  
 Death Rates  
 Smoking attributable health admissions  
 Perception Surveys (Speak-out)

#### Education

%5 A – C GCSE's (Inc. Maths and English)  
 Key Stage Results  
 Adult qualifications  
 Truancy

#### Economy

Benefit measures & Incapacity benefit  
 Income levels (Household)  
 NEET's  
 Business start-up survival rates

#### Crime

Criminal damage  
 Burglary  
 ASB (Needs clarifying)  
 Youth offending  
 Road traffic accidents (RTA)


#### Liveability

House prices  
 Void properties  
 Cleanliness  
 Open spaces  
 Housing condition

#### Stronger Communities

Voting rates

**Plus many other council datasets as they become available through the GIS strategy.**

	<p>All 30 Ward profiles and supplements can be found at:  <a href="http://www.bradfordinfo.com/census/WardProfiles.cfm">http://www.bradfordinfo.com/census/WardProfiles.cfm</a></p> <p>This bulletin was produced by the <b>Research and Consultation Service</b>,              City of Bradford Metropolitan District Council.              Email: <a href="mailto:stephen.elves@bradford.gov.uk">stephen.elves@bradford.gov.uk</a> Tel: 01274 43 7269              August 2007</p>
---	--