

## Ilkley Ward Profile Supplement

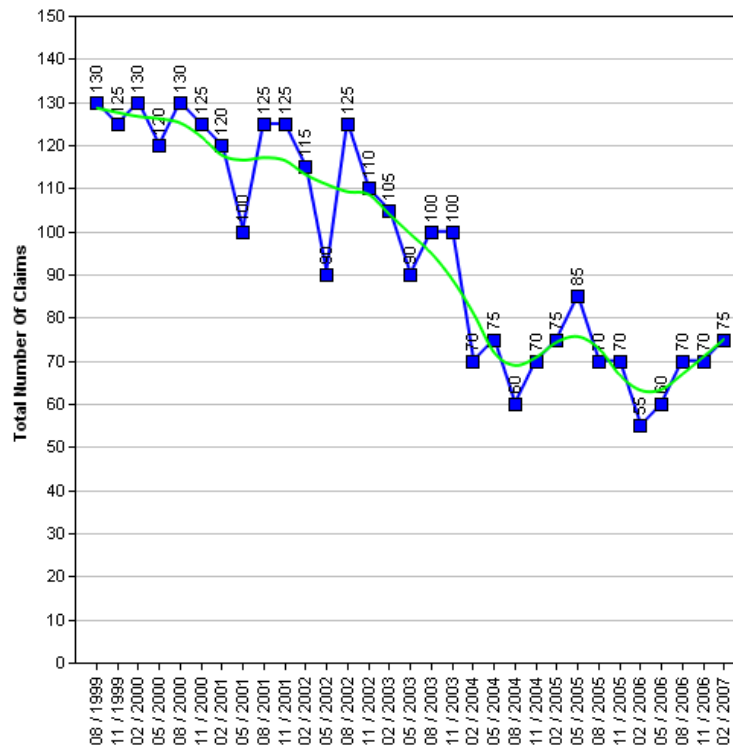
The Census is a survey of all people and households in the country that takes place every 10 years. The Census was last carried out in 2001, with results published in 2003. The next Census is due in 2010, with results expected in 2013. Consequently the actual data cannot be updated in intervening years.

Work has been underway for some time to produce a range of alternative datasets for Bradford to supplement the 2001 Census data with more current and relevant information, which will better describe conditions and progress across the District. This supplement provides a taster of that work.

It is the intention to consult Elected Members on themes and priorities. Regular data updates will then be incorporated into the intranet 'Members Information System' supported by improved analysis and narrative. Periodic snapshots in paper document form will continue to be available.

### Job Seekers Allowance

The 1991 to 2006 Job Seekers Allowance data give an insight into the number of claimants under pensionable age who are available for, and actively seeking work of at least 40 hours a week.



### Job Seekers Allowance Claimants

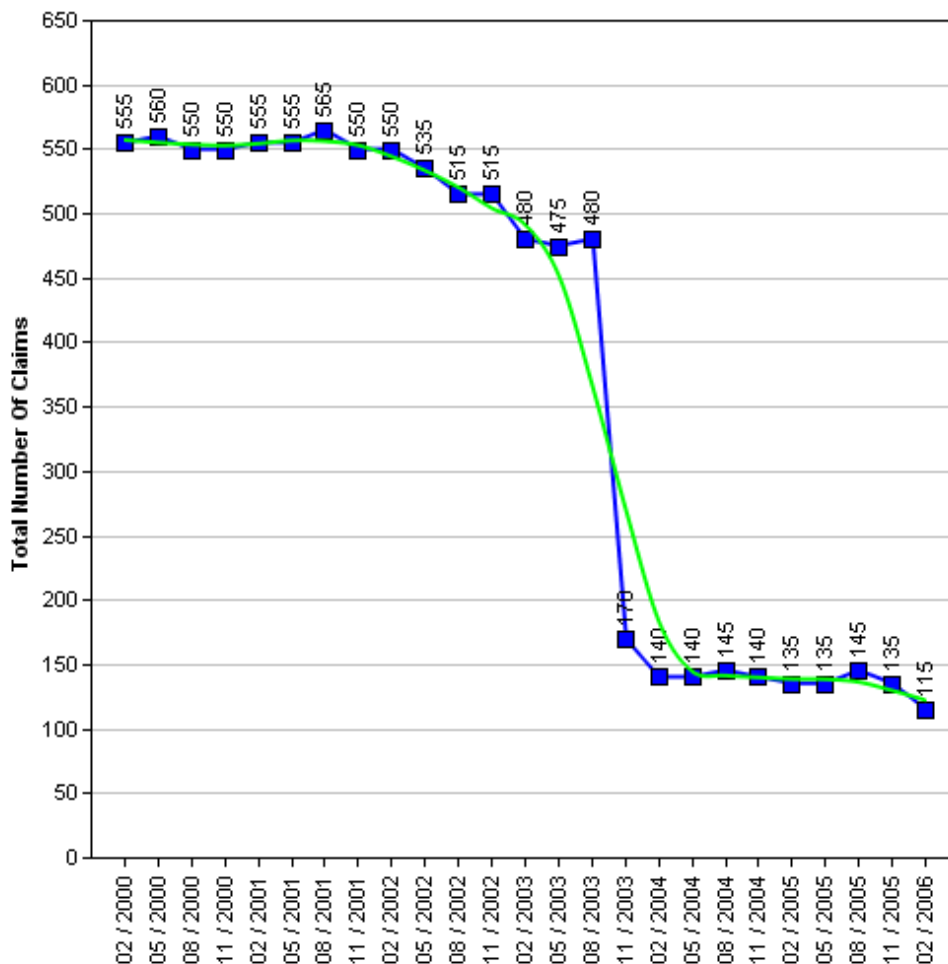
	1999	2000	2001	2002	2003	2004	2005	2006	2007
Quarter 1 (February)	-	130	120	115	105	70	75	55	75
Quarter 2 (May)	-	120	100	90	90	75	85	60	-
Quarter 3 (August)	130	130	125	125	100	60	70	70	-
Quarter 4 (November)	125	125	125	110	100	70	70	70	-



## Income Support

The 2000 to 2006 Income Support data give an insight into the number of claimants between the age of 16-59 who have a low income, don't have savings of £16,000 or more, are not working, work on average less than 16 hours a week, or are unable to work because they are:

- A Lone parent
- Registered sick or disabled
- A student and either a lone parent or disabled
- Or caring for someone who is sick or elderly



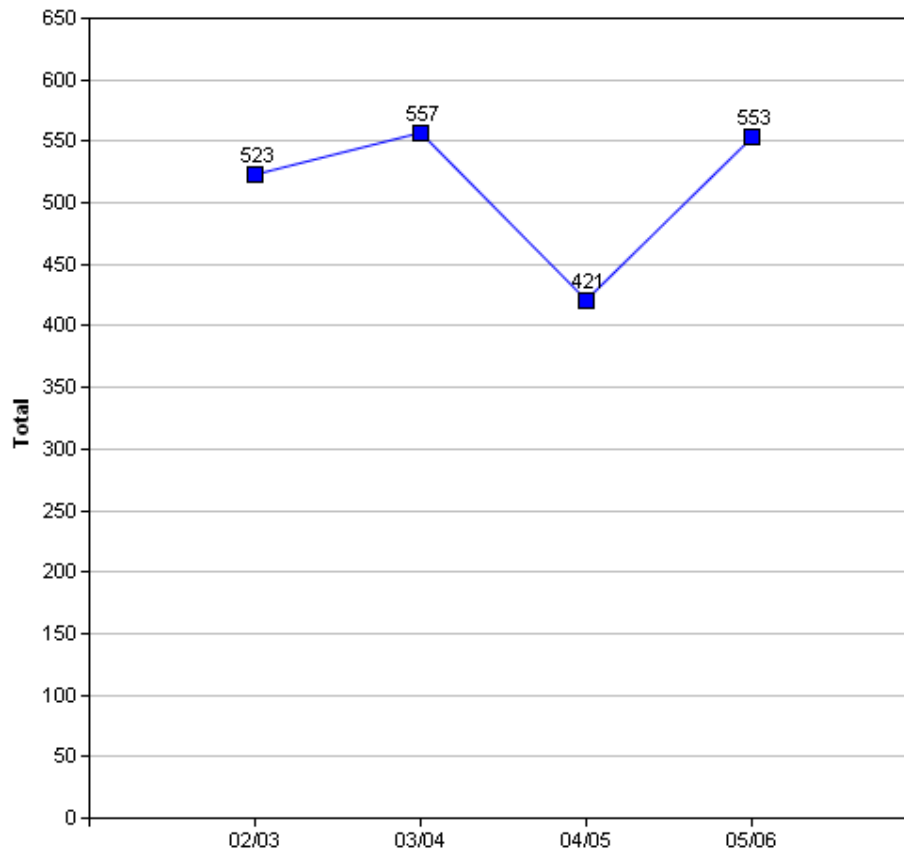
**WARNING:** In the Income Support table there is a drop in the number of claimants between the months of August 2003 and November 2003. The explanation for this is because "from October 2003, Income Support for pensioners was replaced by 'Pension Credit'" (Source: [www.mind.org.uk](http://www.mind.org.uk)).

### Income Support Claimants

	2000	2001	2002	2003	2004	2005	2006
Quarter 1 (February)	-	555	550	480	140	135	115
Quarter 2 (May)	555	555	535	475	140	135	-
Quarter 3 (August)	560	565	515	480	145	145	-
Quarter 4 (November)	550	550	515	170	140	135	-

## Crime

The Crime Data is based on the Crime Domain from the Indices of Deprivation 2004. The Crime Domain consists of 33 categories of recorded crime which are then grouped to form 4 composite indicators: burglary, criminal damage, theft and violence. This report gives an insight into the number of offences committed within the selected area and compares this with the Bradford district. The data is displayed for each year by composite indicator.

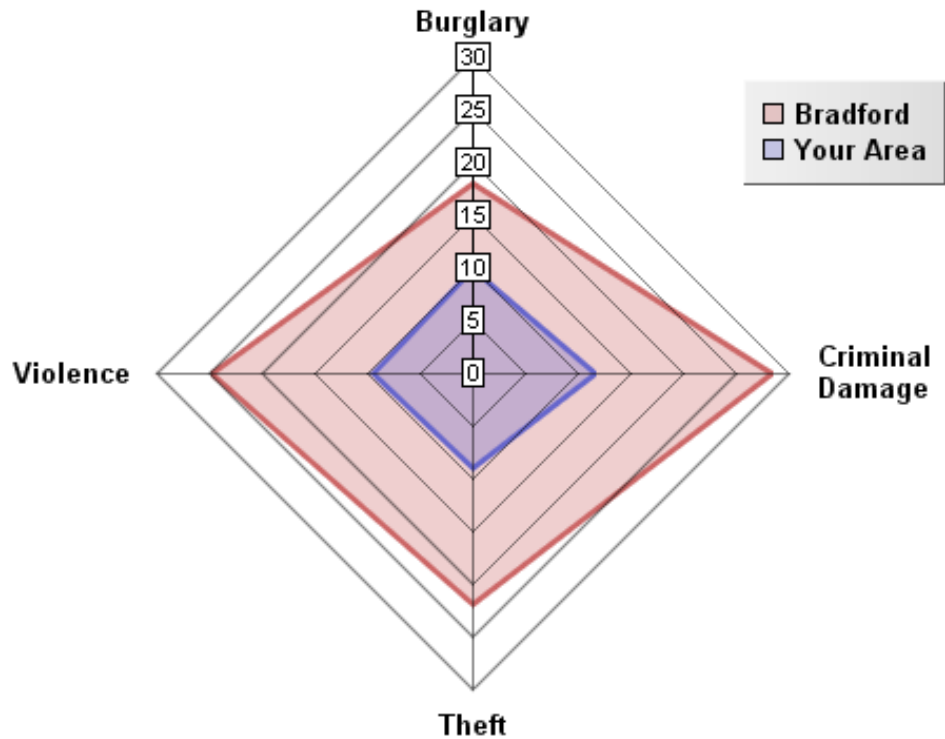


### Overall Crimes per Year

Year	Selected Area			Bradford District		
	No.Offences	Change	% Change	No.Offences	Change	% Change
2002/03	523			49,264		
2003/04	557	+34	+6.5%	48,973	+291	+0.6%
2004/05	421	-136	-24.4%	40,747	+8,226	+16.8%
2005/06	553	132	31.4%	43,562	-2,815	-6.9%

The pattern of crime in the Ilkley Ward has broadly followed a similar trend to the district. In 2004/05 numerous district wide initiatives from West Yorkshire Police and the District Crime and Disorder Reduction Partnership yielded significant reductions in crime across most categories. This was an exceptional year for crime reduction and such significant reductions have proven to be unsustainable in the following years. However, there has been a 5.7% increase in crime between 2002 and 2006, which is mainly due to the unsustainably low levels of crime in this ward in 2002. It is important to note that ID2004 Crime Domain definition of crime is limited to a subset of crime. A more accurate picture can be obtained by looking at Overall Crime Levels in the district.

### 05/06 Comparison with District (Rate per 1000 population)

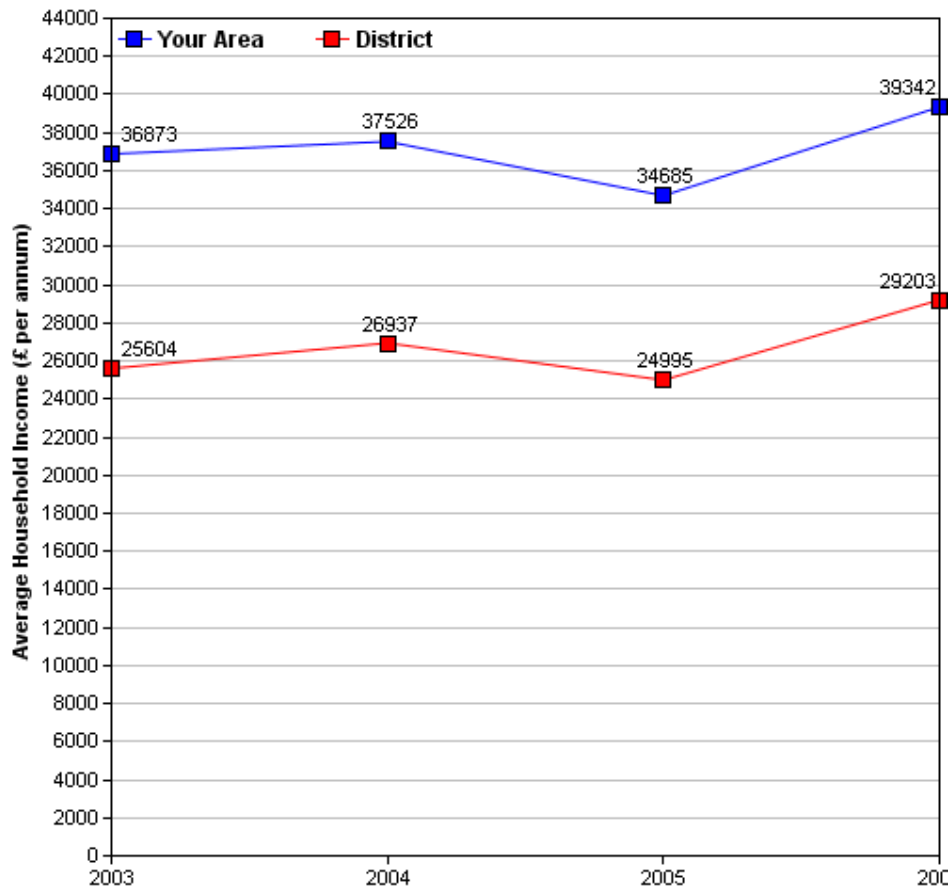


The above crime radar graph compares four variables of crime, per thousand population for your area, with that of the Bradford district. The pink line indicates the Bradford District rate and the blue line represents the rate for your area. The radar graph allows us to see that all crime variables in your area are significantly below those of the district. The radar graph also allows you to see which crime variables are closer or further from the district rate, by comparing the gap between the blue and pink lines. Theft (9 per thousand population) for your area is below the district rate (23 per thousand population). The gaps between the district rate and your area are longer for all crime categories meaning none of the categories are anywhere near the District rate per thousand population. This indicates that these crime rate variables are less frequent in your area compared to the district rate. These rates may well reflect the overall rural characteristic of Ilkley and the general higher incomes and lower levels of deprivation compared to other wards in the district.

## Income

Information relating to income is derived from data supplied by CACI called 'PayCheck', which provides estimates of mean household income for every postcode in the UK. Unfortunately, it is not possible to use PayCheck data to examine changes in income over time, due to changes in data collection methods. However, it is possible to compare figures from different geographic areas (i.e. Ward and District) for the same time period, as they are derived using the same data collection method.

(For more information on PayCheck data please see [www.caci.co.uk](http://www.caci.co.uk).)



### Overall Income by Year

	2003	2004	2005	2006
Mean per Annum	£36,873.29	£37,525.98	£34,685.10	£39,341.70
Mean per Annum (District)	£25,604.05	£26,936.70	£24,995.30	£29,203.12

## Ethnic Diversity

This data comes from the 1991 and 2001 Censuses and shows the diversity of ethnic groups within the Bradford District. By comparing the 1991 Census with the 2001 Census we are able to compare the area over time. At both the 1991 (99.0%) and 2001 (98.0%) Census Ilkley was almost completely White.

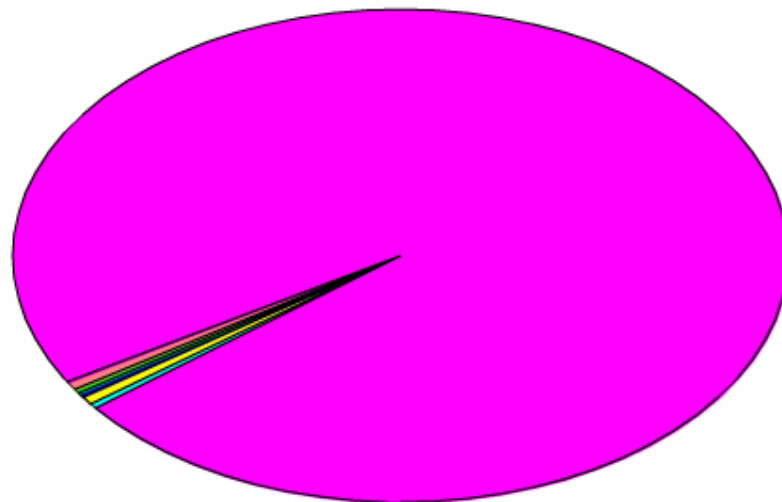
### Ethnic Diversity 1991

	Number	Percentage
White	13,324	99.0 %
Asian	43	0.3 %
Black	20	0.1 %
Other	69	0.5 %

### Ethnic Diversity 2001

	Number	Percentage
White	13,551	98.0 %
Mixed	94	0.7 %
Asian	85	0.6 %
Black	26	0.2 %
Other	66	0.5 %

■ Bangladeshi	15(0%)
■ Black or Black British	26(0%)
■ Indian	47(0%)
■ Mixed(1)	94(1%)
■ Pakistani	21(0%)
■ White	13,550(98%)
■ Other ethnic group	66(0%)



## Travel to Work (Census 2001)

This data comes from the 2001 Census. It has details about the people who travel to and from the area to go to work, and their method of getting there.

### Travel from Ilkley

#### Totals

Total People travelling from Area	Distance Travelled (in Km)					
	Average (mean)	Maximum	Standard Deviation	Standard Deviation (of the population)	Variance	Variance (of the population)
5,981	15	329	40	40	1,604,665	1,604,538
<b>Method of travel to work</b>						
Works mainly at or from home	Public Transport			Bicycle	On Foot	Other
	Train	Bus etc	Taxi			
736	758	111	27	45	723	39
<b>By Car</b>				<b>Motorcycle etc</b>		
<b>As driver</b>		<b>As passenger</b>				
3,244		247		27		

#### By Local Authority

Destination Local Authority	Total People travelling from Area	Distance Travelled (in Km)	
		Average (mean)	Maximum
Bradford	3,629	4	21
Leeds	1,590	19	36
Craven	195	14	34
Harrogate	129	15	36
Kirklees	48	27	32
Wakefield	36	34	44
Calderdale	30	24	27
Manchester	27	59	71
Pendle	21	27	31
Hillingdon	15	285	287
York	15	50	50
Westminster	12	291	292
Sheffield	12	65	69
Hambleton	12	46	54
Hammersmith and Fulham	9	291	295

## Travel to Ilkley

### Totals

Total People travelling to Area	Distance Travelled (in Km)					
	Average (mean)	Maximum	Standard Deviation	Standard Deviation (of the population)	Variance	Variance (of the population)
5,482	8	278	18	18	327,878	327,854
<b>Method of travel to work</b>						
Works mainly at or from home	Public Transport			Bicycle	On Foot	Other
	Train	Bus etc	Taxi			
736	240	282	30	33	720	21
<b>By Car</b>				<b>Motorcycle etc</b>		
<b>As driver</b>		<b>As passenger</b>				
3,022		370		24		

### By Local Authority

Origin Local Authority	Total People travelling from Area	Distance Travelled (in Km)	
		Average (mean)	Maximum
Bradford	4,079	4	22
Leeds	798	14	35
Craven	255	15	44
Harrogate	113	15	26
Kirklees	42	27	39
Pendle	36	24	29
Calderdale	27	24	29
Wakefield	27	38	50
York	12	48	51
Newcastle upon Tyne	9	120	123
Birmingham	6	167	172
Hambleton	6	43	43
Sheffield	6	65	65
Sefton	6	94	94
Selby	6	44	50

Of the people who travel to work from Ilkley, over 58.4% travel by car (54.2% as drivers and 4.1% as passengers), 4.5% by motorcycle and 0.3% travel by other means (including train, buses, taxis, bicycle, on foot and other modes). The remaining 12.3% work predominantly from home.

Over 9% more people travel from Ilkley than those that travel to Ilkley.

Of the people who travel to work in Ilkley, over 61.9% travel by car (55.1% as drivers and 6.8% as passengers), 0.4% by motorcycle and 24.2% travel by other means (including train, buses, taxis, bicycle, on foot and other modes). The remaining 13.4% work predominantly from home.

## Indices of Deprivation 2004 (ID2004)

The Index of Multiple Deprivation 2004 (IMD 2004) is a Super Output Area (SOA) level measure of multiple deprivation. England is divided into 32,482 SOAs, which are small areas containing an average of 1,500 residents. The IMD 2004 project gives a score and rank to each SOA for seven areas of deprivation:

- Income deprivation
- Employment deprivation
- Health deprivation and disability
- Education, skills and training deprivation
- Barriers to Housing and Services
- Living environment deprivation
- Crime

Also, each SOA has been given an overall score and rank which takes into account all seven indices, and this is known as the Index of Multiple Deprivation 2004.

Ranks vary from 1 to 32,482, with 1 being the most deprived. Higher scores indicate that areas are more deprived. When comparing the deprivation of different areas, it is better to look at the rank than the score. Bradford Council has been able to use the Maps and Stats web-based GIS system ([www.mapsandstats.com](http://www.mapsandstats.com)) to combine scores for the SOAs that fall within the wards, and hence estimate the Indices of Deprivation at ward level.

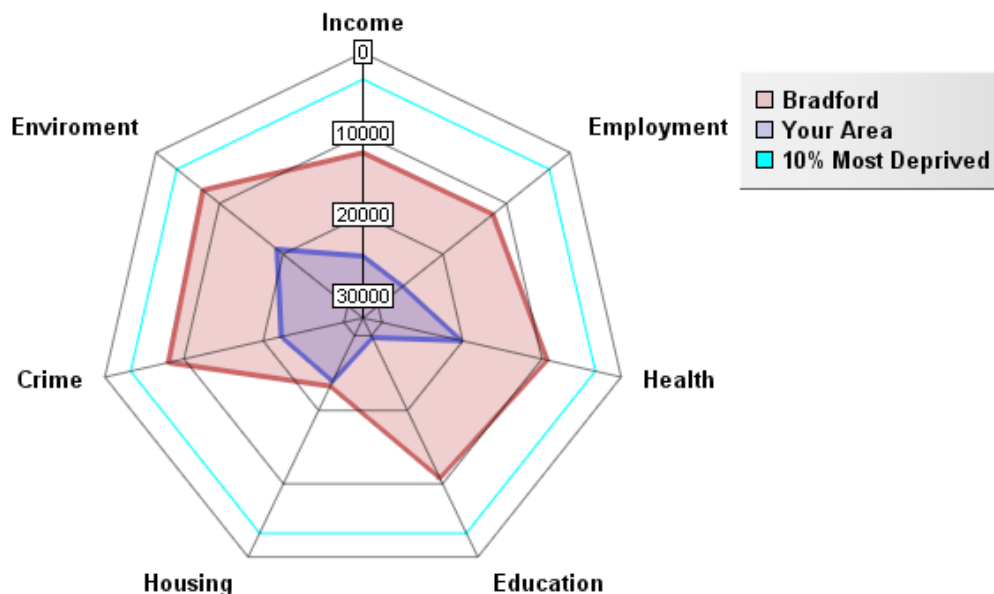
### Index of Multiple Deprivation 2004

	ID 2004 Overall Rank (Average)	ID 2004 Overall Score
E01016674 in Wokingham LA	26876	7.65
<b>Ilkley Ward</b>	<b>26876.14</b>	<b>7.50</b>
E01021734 in Colchester LA	26877	7.65
<b>Average for Bradford</b>	<b>10656.03</b>	<b>32.93</b>

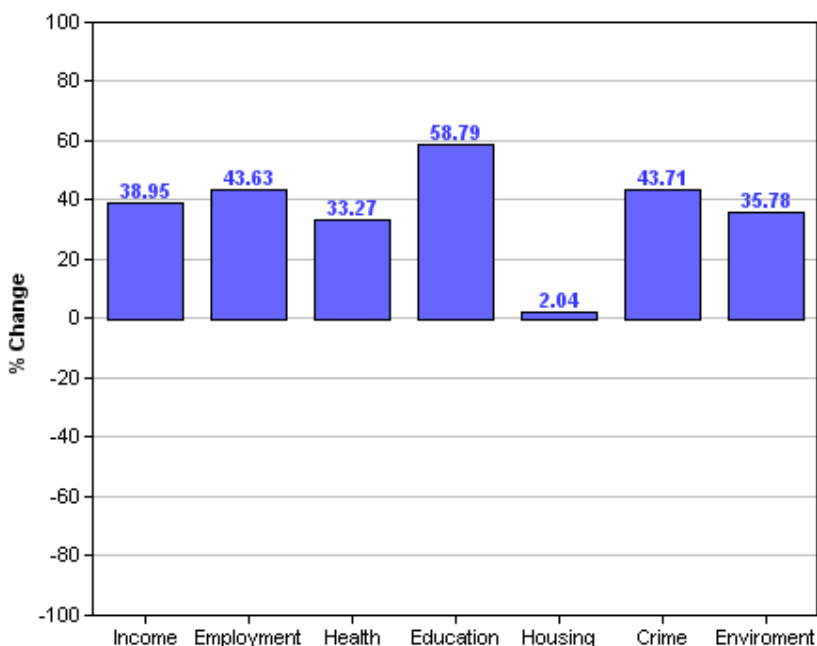
This table shows the average ranks and scores for the Ilkley ward. The rows above and below Ilkley show which SOAs in England have the most similar ranks to this ward, and are therefore considered to have the most similar levels of deprivation. It is important to note, however, that these areas may be deprived for different reasons.

### Area Rank against Average Bradford Rank

Ilkley is relatively less deprived compared to the rest of the District average, only in the Housing domain in the Index of Deprivation 2004 is Ilkley at a similar level of deprivation, although this is likely due to the low level of deprivation within Bradford for this domain. Overall Ilkley is significantly less deprived on all domains compared with the District. Ilkley is least deprived in Education (58.7), Crime (43.7) and Employment (43.6).



## Percentage Difference between Area Rank and Average Bradford Rank



### Other datasets currently being investigated / acquired:

#### Health

Low birth weight  
 Death Rates  
 Smoking attributable health admissions  
 Perception Surveys (Speak-out)

#### Education

%5 A – C GCSE's (Inc. Maths and English)  
 Key Stage Results  
 Adult qualifications  
 Truancy

#### Economy

Benefit measures & Incapacity benefit  
 Income levels (Household)  
 NEET's  
 Business start-up survival rates

#### Crime

Criminal damage  
 Burglary  
 ASB (Needs clarifying)  
 Youth offending  
 Road traffic accidents (RTA)


#### Liveability

House prices  
 Void properties  
 Cleanliness  
 Open spaces  
 Housing condition

#### Stronger Communities

Voting rates

**Plus many other council datasets as they become available through the GIS strategy.**

	<p>All 30 Ward profiles and supplements can be found at:  <a href="http://www.bradfordinfo.com/census/WardProfiles.cfm">http://www.bradfordinfo.com/census/WardProfiles.cfm</a></p> <p>This bulletin was produced by the <b>Research and Consultation Service</b>,              City of Bradford Metropolitan District Council.              Email: <a href="mailto:stephen.elves@bradford.gov.uk">stephen.elves@bradford.gov.uk</a> Tel: 01274 43 7269              August 2007</p>
---	--