

## Little Horton Ward Profile Supplement

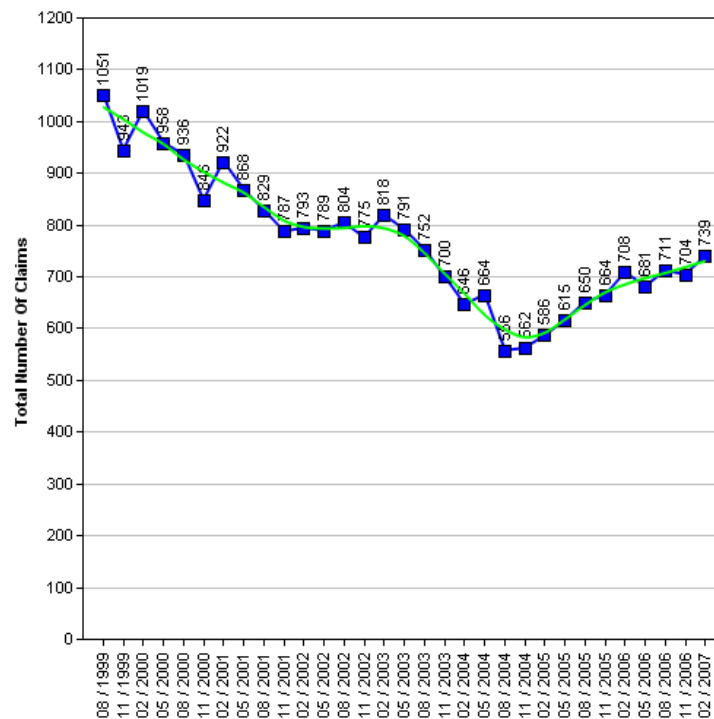
The Census is a survey of all people and households in the country that takes place every 10 years. The Census was last carried out in 2001, with results published in 2003. The next Census is due in 2010, with results expected in 2013. Consequently the actual data cannot be updated in intervening years.

Work has been underway for some time to produce a range of alternative datasets for Bradford to supplement the 2001 Census data with more current and relevant information, which will better describe conditions and progress across the District. This supplement provides a taster of that work.

It is the intention to consult Elected Members on themes and priorities. Regular data updates will then be incorporated into the intranet 'Members Information System' supported by improved analysis and narrative. Periodic snapshots in paper document form will continue to be available.

### Job Seekers Allowance

The 1991 to 2006 Job Seekers Allowance data give an insight into the number of claimants under pensionable age who are available for and actively seeking work of at least 40 hours a week.



### Job Seekers Allowance Claimants

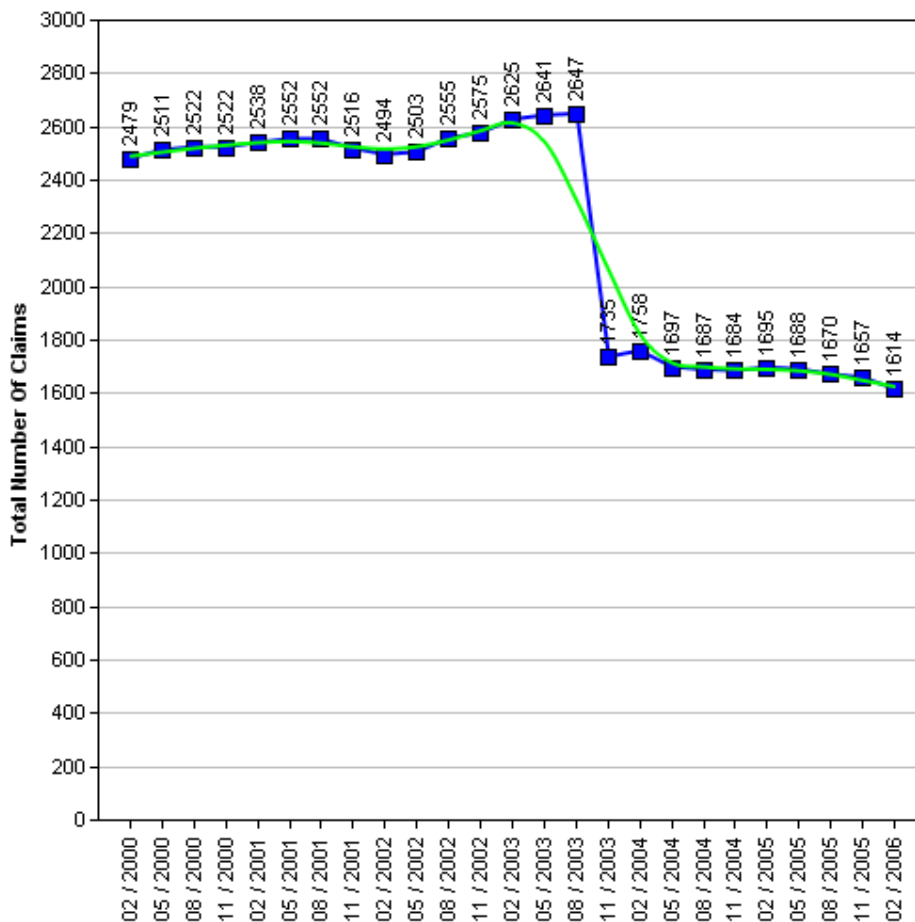
	1999	2000	2001	2002	2003	2004	2005	2006	2007
Quarter 1 (February)	-	1,019	922	793	818	646	586	708	739
Quarter 2 (May)	-	958	868	789	791	664	615	681	-
Quarter 3 (August)	1,051	936	829	804	752	556	650	711	-
Quarter 4 (November)	943	846	787	775	700	562	664	704	-



## Income Support

The 2000 to 2006 Income Support data give an insight into the number of claimants between the age of 16-59 who have a low income, don't have savings of £16,000 or more, are not working, work on average less than 16 hours a week, or are unable to work because they are:

- A Lone parent
- Registered sick or disabled
- A student and either a lone parent or disabled
- Or caring for someone who is sick or elderly



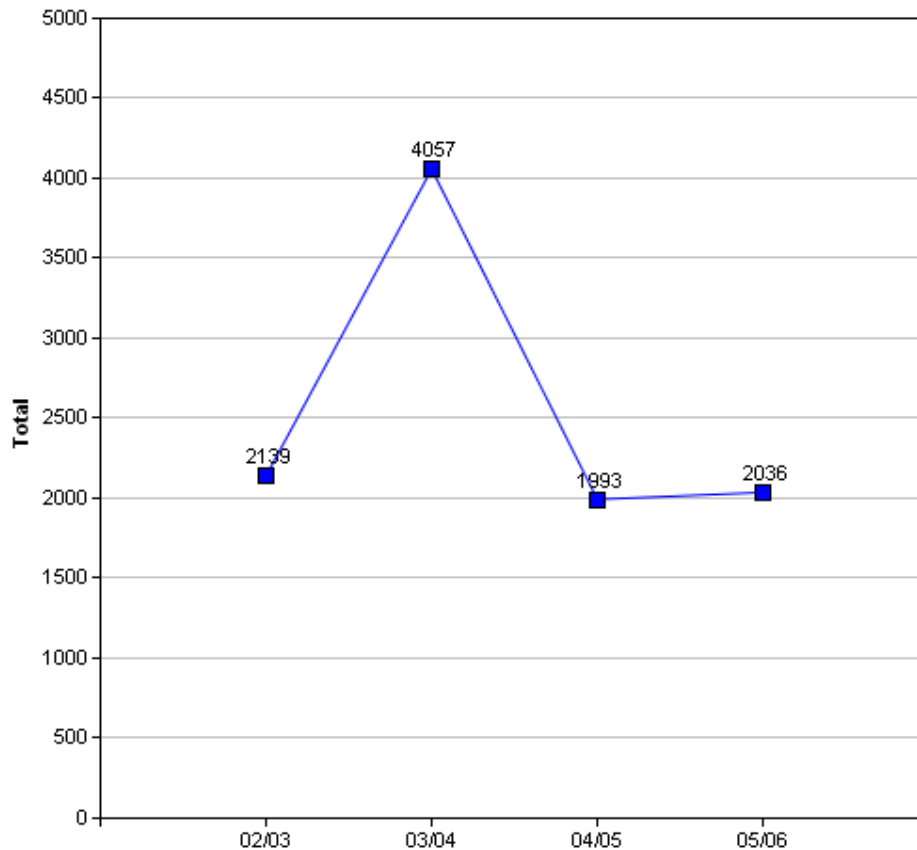
**WARNING:** In the Income Support table there is a drop in the number of claimants between the months of August 2003 and November 2003. The explanation for this is because "from October 2003, Income Support for pensioners was replaced by 'Pension Credit'" (Source: [www.mind.org.uk](http://www.mind.org.uk)).

## Income Support Claimants

	2000	2001	2002	2003	2004	2005	2006
Quarter 1 (February)	-	2,538	2,494	2,625	1,758	1,695	1614
Quarter 2 (May)	2,479	2,552	2,503	2,641	1,697	1,688	-
Quarter 3 (August)	2,511	2,552	2,555	2,647	1,687	1,670	-
Quarter 4 (November)	2,522	2,516	2,575	1,735	1,684	1,657	-

## Crime

The Crime data is based on the Crime Domain from the Indices of Deprivation 2004. The Crime Domain consists of 33 categories of recorded crime which are then grouped to form 4 composite indicators: burglary, criminal damage, theft and violence. This report gives an insight into the number of offences committed within the selected area and compares this with the Bradford district. The data is displayed for each year by composite indicator.

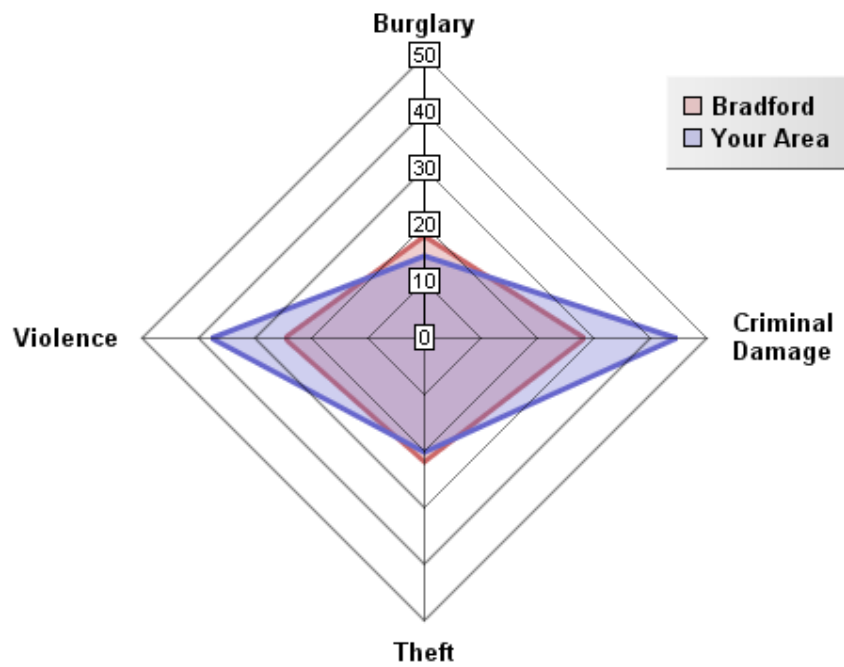


### Overall Crimes per Year

Year	Selected Area			Bradford District		
	No.Offences	Change	% Change	No.Offences	Change	% Change
2002/03	2,139			49,264		
2003/04	4,057	+1,918	+89.7%	48,973	-291	-0.59%
2004/05	1,993	-2,064	-50.9%	40,747	-8,226	-16.80%
2005/06	2,036	+43	+2.2%	43,562	+2,815	+6.91%

The pattern of crime in the Little Horton Ward has broadly followed a similar trend to the district, except that there was a "blip" in 2003/04. In 2004/05 numerous district wide initiatives from West Yorkshire Police and the District Crime and Disorder Reduction Partnership yielded significant reductions in crime across most categories. This was an exceptional year for crime reduction and such significant reductions have proven to be unsustainable in the following years. There has still been a 4.8% decrease in crime between 2002 and 2006. It is important to note that ID2004 Crime Domain definition of crime is limited to a subset of crime. A more accurate picture can be obtained by looking at Overall Crime Levels in the district.

### 05/06 Comparison with District (Rate per 1000 population)

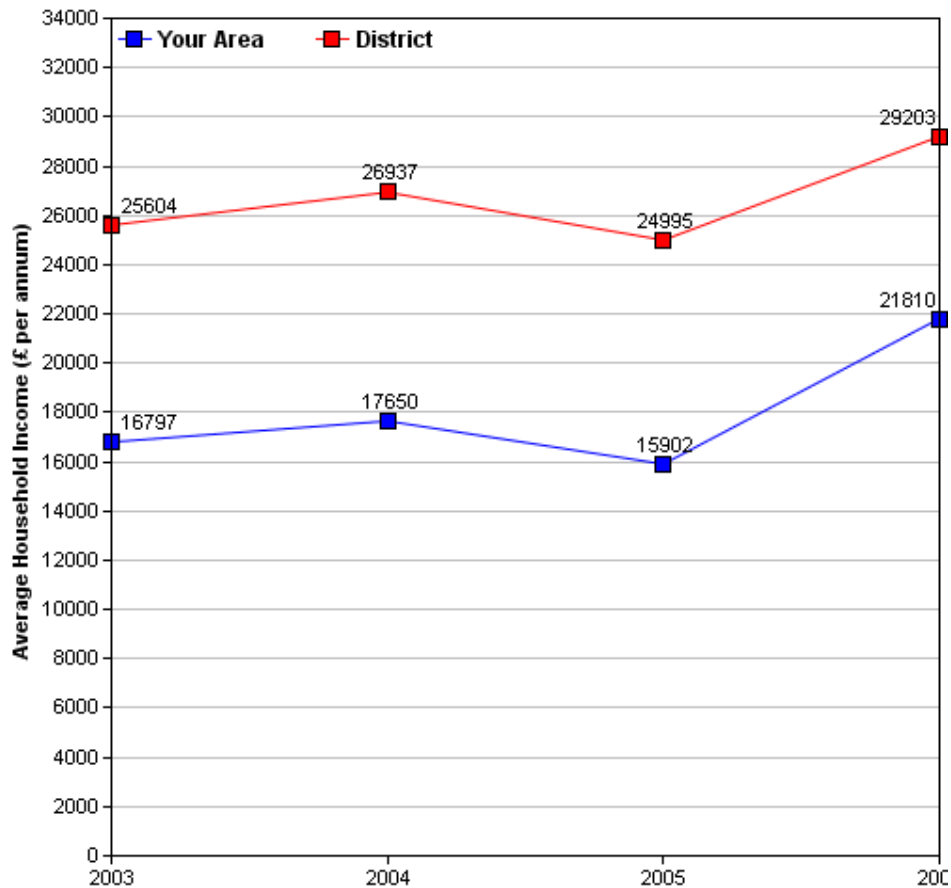


The above crime radar graph compares four variables of crime, per thousand population for your area, with that of the Bradford District. The pink line indicates the Bradford District rate per thousand population and the blue line represents the per thousand population rate for your area. The radar graph allows us to see that all two of the crime variables (Theft and Burglary) in your area are below those of the district average. The radar graph also allows you to see which crime variables are closer or further from the district rate, by comparing the gap between the blue and pink lines. Burglary (15 per thousand population) for your area is well below the district rate (20 per thousand population). Theft is closer to the district average, as the gap between the pink and blue lines are shortest for this variable, when compared to the other crime variables for your area. The gaps between the district rate and your area are longer for Criminal Damage and Violence. This indicates that these crime variables are significantly higher in your area compared to the district rate. These rates may well reflect the urban characteristic and higher levels of deprivation experienced by the Little Horton ward.

## Income

Information relating to income is derived from data supplied by CACI called 'PayCheck', which provides estimates of mean household income for every postcode in the UK. Unfortunately, it is not possible to use PayCheck data to examine changes in income over time, due to changes in data collection methods. However, it is possible to compare figures from different geographic areas (i.e. Ward and District) for the same time period, as they are derived using the same data collection method.

(For more information on PayCheck data please see [www.caci.co.uk](http://www.caci.co.uk).)



### Overall Income by Year

	2003	2004	2005	2006
Mean per Annum	£16,797.07	£17,649.64	£15,902.31	£21,810.12
Mean per Annum (District)	£25,604.05	£26,936.70	£24,995.30	£29,203.12

## Ethnic Diversity

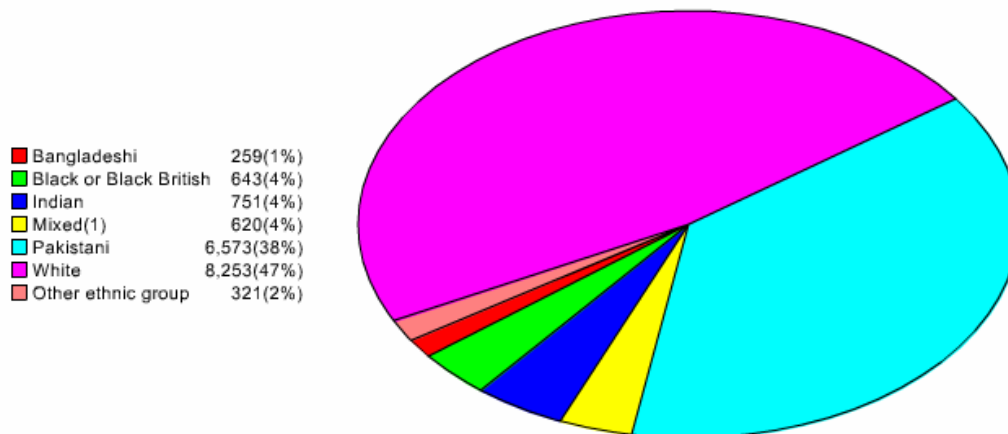
This data comes from the 1991 and 2001 Censuses and shows the diversity of ethnic groups within the Bradford District. By comparing the 1991 Census with the 2001 Census we are able to compare the area over time. The Little Horton ward appears to have become more diverse.

### Ethnic Diversity 1991

	Number	Percentage
White	11,284	63.1%
Asian	5,127	28.7%
Black	888	5%
Other	586	3.3%

### Ethnic Diversity 2001

	Number	Percentage
White	8,254	47.4%
Mixed	620	3.6%
Asian	7,584	43.5%
Black	644	3.7%
Other	321	1.8%



## Travel to Work (Census 2001)

This data comes from the 2001 Census. It has details about the people who travel to and from the area to go to work and their method of getting there.

### Travel from Little Horton

#### Totals

Total People travelling from Area	Distance Travelled (in Km)					
	Average (mean)	Maximum	Standard Deviation	Standard Deviation (of the population)	Variance	Variance (of the population)
4,772	6	331	20	20	383,656	383,616
<b>Method of travel to work</b>						
Works mainly at or from home	Public Transport			Bicycle	On Foot	Other
	Train	Bus etc	Taxi			
288	60	972	56	36	784	31
<b>By Car</b>				<b>Motorcycle etc</b>		
<b>As driver</b>		<b>As passenger</b>				
2,035		476		30		

#### By Local Authority

Destination Local Authority	Total People travelling from Area	Distance Travelled (in Km)	
		Average (mean)	Maximum
Bradford	4008	2	22
Leeds	411	12	33
Kirklees	137	10	26
Calderdale	66	8	23
Wakefield	24	24	31
Craven	8	23	26
Harrogate	7	31	38
Doncaster	7	50	51
Richmondshire	7	66	67
Oldham	6	33	35
Manchester	6	46	47
Selby	6	44	46
Sheffield	4	46	47
Preston	3	60	65
Pendle	3	29	30

## Travel to Little Horton

### Totals

Total People travelling to Area	Distance Travelled (in Km)					
	Average (mean)	Maximum	Standard Deviation	Standard Deviation (of the population)	Variance	Variance (of the population)
3,841	8	361	18	18	332,845	332,825
<b>Method of travel to work</b>						
Works mainly at or from home	Public Transport			Bicycle	On Foot	Other
	Train	Bus etc	Taxi			
288	30	378	34	35	434	16
<b>By Car</b>				<b>Motorcycle etc</b>		
<b>As driver</b>		<b>As passenger</b>				
2,255		334		31		

### By Local Authority

Origin Local Authority	Total People travelling from Area	Distance Travelled (in Km)	
		Average (mean)	Maximum
Bradford	2,899	4	21
Leeds	263	11	35
Kirklees	259	11	29
Calderdale	191	9	22
Wakefield	61	21	35
Craven	29	25	39
Harrogate	19	29	43
Doncaster	12	47	51
York	12	49	53
Barnsley	9	31	55
Selby	9	38	52
Rotherham	7	48	54
Sheffield	6	42	53
Bolton	6	53	53
East Riding of Yorkshire	6	87	87

Of the people who travel to work from Little Horton, over 52.6% travel by car (42.6% as drivers and 10% as passengers), 6.3% by motorcycle and 0.4% travel by other means (including train, buses, taxis, bicycle, on foot and other modes). The remaining 6% work predominantly from home.

Over 20% more people travel from Little Horton than those that travel to Little Horton.

Of the people who travel to work in Little Horton, over 67.4% travel by car (58.7% as drivers and 8.7% as passengers), 0.8% by motorcycle and 24.1% travel by other means (including train, buses, taxis, bicycle, on foot and other modes). The remaining 7.5% work predominantly from home.

## Indices of Deprivation 2004 (ID2004)

The Index of Multiple Deprivation 2004 (IMD 2004) is a Super Output Area (SOA) level measure of multiple deprivation. England is divided into 32,482 SOAs, which are small areas containing an average of 1,500 residents. The IMD 2004 project gives a score and rank to each SOA for seven areas of deprivation:

- Income deprivation
- Employment deprivation
- Health deprivation and disability
- Education, skills and training deprivation
- Barriers to Housing and Services
- Living environment deprivation
- Crime

Also, each SOA has been given an overall score and rank which takes into account all seven indices, and this is known as the Index of Multiple Deprivation 2004.

Ranks vary from 1 to 32,482, with 1 being the most deprived. Higher scores indicate that areas are more deprived. When comparing the deprivation of different areas, it is better to look at the rank than the score. Bradford Council has been able to use the Maps and Stats web-based GIS system ([www.mapsandstats.com](http://www.mapsandstats.com)) to combine scores for the SOAs that fall within the wards, and hence estimate the Indices of Deprivation at ward level.

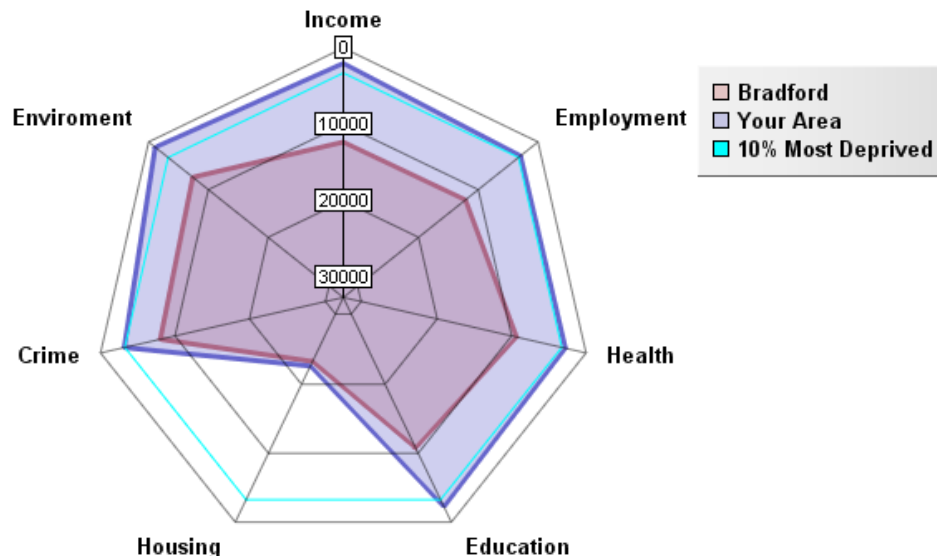
### Index of Multiple Deprivation 2004

	ID 2004 Overall Rank (Average)	ID 2004 Overall Score
E01032471 in Wyre Forest LA	1728	53.28
<b>Little Horton Ward</b>	<b>1728.88</b>	<b>58.2</b>
E01020112 in North Devon LA	1729	53.28
<b>Average for Bradford</b>	<b>10656.03</b>	<b>32.93</b>

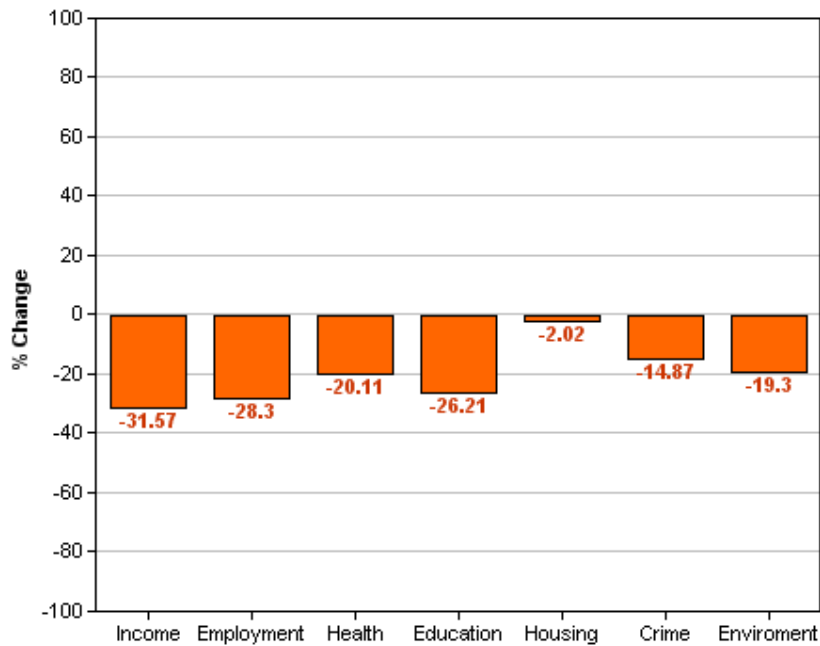
This table shows the average ranks and scores for the Little Horton ward. The rows above and below Little Horton show which SOAs in England have the most similar ranks to this ward, and are therefore considered to have the most similar levels of deprivation. It is important to note, however, that these areas may be deprived for different reasons.

### Area Rank against Average Bradford

The below radar graph and bar chart indicates that for all deprivation domains indicated your area falls into the 10% most deprived in the Bradford District. Only the Housing domain for your area is similar to the Bradford District average (-2.0). This is a reflection of the urban nature of this area. The deprivation difference between your area and the Bradford District is greatest for the following: Income (-31.7) Employment (-28.3) and Education (-26.1). Overall, Little Horton is a deprived area the district.



## Percentage Difference between Area Rank and Average Bradford Rank



### Other dataset currently being investigated / acquired:

#### Health

Low birth weight  
 Death Rates  
 Smoking attributable health admissions  
 Perception Surveys (Speak-out)

#### Education

%5 A – C GCSE's (Inc. Maths and English)  
 Key Stage Results  
 Adult qualifications  
 Truancy

#### Economy

Benefit measures & Incapacity benefit  
 Income levels (Household)  
 NEET's  
 Business start-up survival rates

#### Crime

Criminal damage  
 Burglary  
 ASB (Needs clarifying)  
 Youth offending  
 Road traffic accidents (RTA)


#### Liveability

House prices  
 Void properties  
 Cleanliness  
 Open spaces  
 Housing condition

#### Stronger Communities

Voting rates

**Plus many other council datasets as they become available through the GIS strategy.**

	<p>All 30 Ward profiles and supplements can be found at:  <a href="http://www.bradfordinfo.com/census/WardProfiles.cfm">http://www.bradfordinfo.com/census/WardProfiles.cfm</a></p> <p>This bulletin was produced by the <b>Research and Consultation Service</b>,              City of Bradford Metropolitan District Council.              Email: <a href="mailto:stephen.elves@bradford.gov.uk">stephen.elves@bradford.gov.uk</a> Tel: 01274 43 7269              August 2007</p>
---	--