

Manningham Ward Profile Supplement

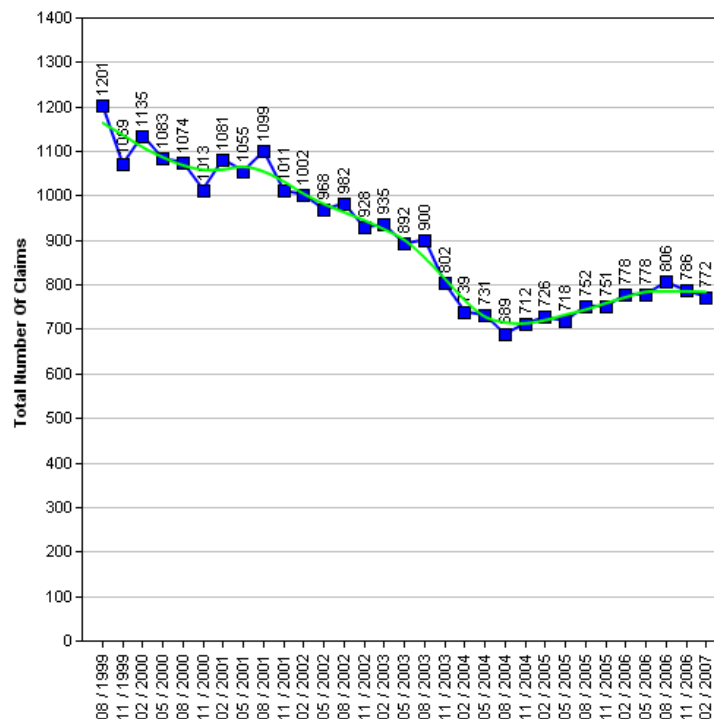
The Census is a survey of all people and households in the country that takes place every 10 years. The Census was last carried out in 2001, with results published in 2003. The next Census is due in 2010, with results expected in 2013. Consequently the actual data cannot be updated in intervening years.

Work has been underway for some time to produce a range of alternative datasets for Bradford to supplement the 2001 Census data with more current and relevant information, which will better describe conditions and progress across the District. This supplement provides a taster of that work.

It is the intention to consult Elected Members on themes and priorities. Regular data updates will then be incorporated into the intranet 'Members Information System' supported by improved analysis and narrative. Periodic snapshots in paper document form will continue to be available.

Job Seekers Allowance

The 1991 to 2006 Job Seekers Allowance data give an insight into the number of claimants under pensionable age who are available for and actively seeking work of at least 40 hours a week.



Job Seekers Allowance Claimants

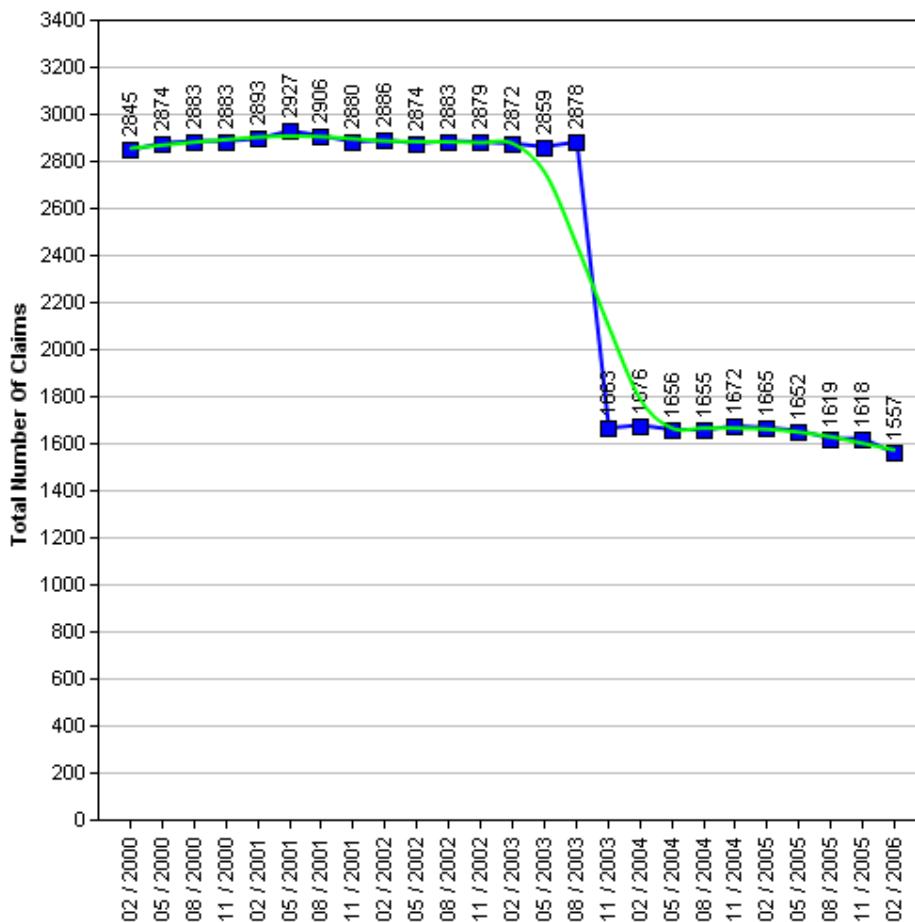
	1999	2000	2001	2002	2003	2004	2005	2006	2007
Quarter 1 (February)	-	1,135	1,081	1,002	935	739	726	778	772
Quarter 2 (May)	-	1,083	1,055	968	892	731	718	778	-
Quarter 3 (August)	1,201	1,074	1,099	982	900	689	752	806	-
Quarter 4 (November)	1,069	1,013	1,011	928	802	712	751	786	-



Income Support

The 2000 to 2006 Income Support data give an insight into the number of claimants between the age of 16-59 who have a low income, don't have savings of £16,000 or more, are not working, work on average less than 16 hours a week, or are unable to work because they are:

- A Lone parent
- Registered sick or disabled
- A student and either a lone parent or disabled
- Or caring for someone who is sick or elderly



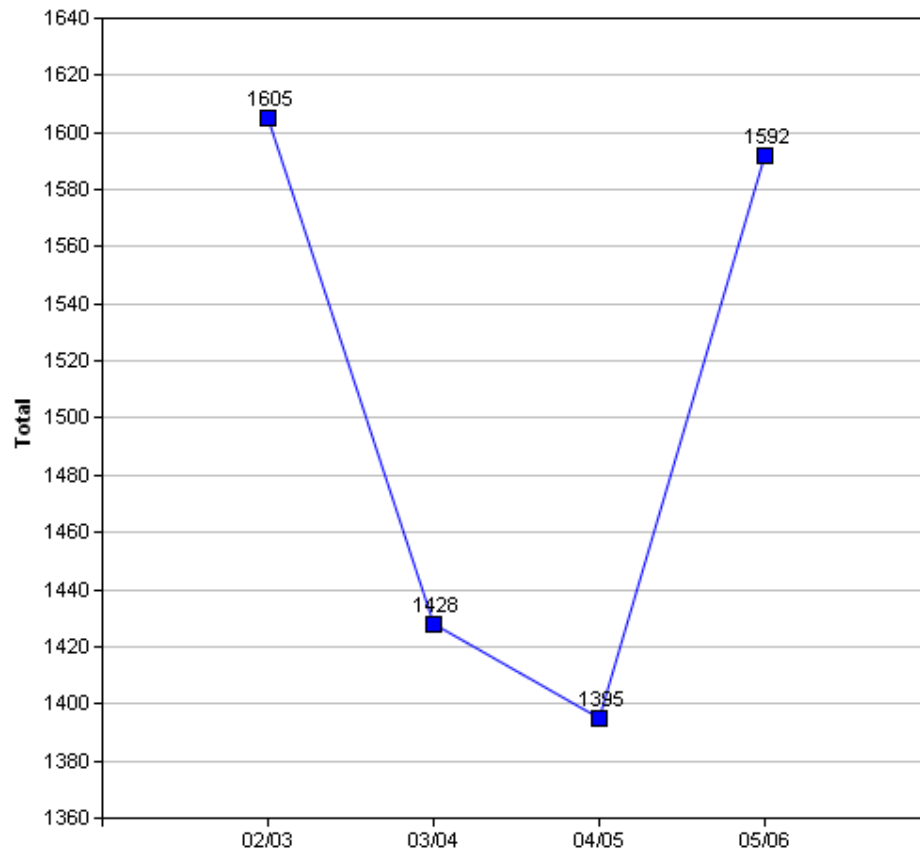
WARNING: In the Income Support table there is a drop in the number of claimants between the months of August 2003 and November 2003. The explanation for this is because "from October 2003, Income Support for pensioners was replaced by 'Pension Credit'" (Source: www.mind.org.uk).

Income Support Claimants

	2000	2001	2002	2003	2004	2005	2006
Quarter 1 (February)	-	2,893	2,886	2,872	1,676	1,665	1,557
Quarter 2 (May)	2,845	2,927	2,874	2,859	1,656	1,652	-
Quarter 3 (August)	2,874	2,906	2,883	2,878	1,655	1,619	-
Quarter 4 (November)	2,883	2,880	2,879	1,663	1,672	1,618	-

Crime

The Crime data is based on the Crime Domain from the Indices of Deprivation 2004. The Crime Domain consists of 33 categories of recorded crime which are then grouped to form 4 composite indicators: burglary, criminal damage, theft and violence. This report gives an insight into the number of offences committed within the selected area and compares this with the Bradford district. The data is displayed for each year by composite indicator.

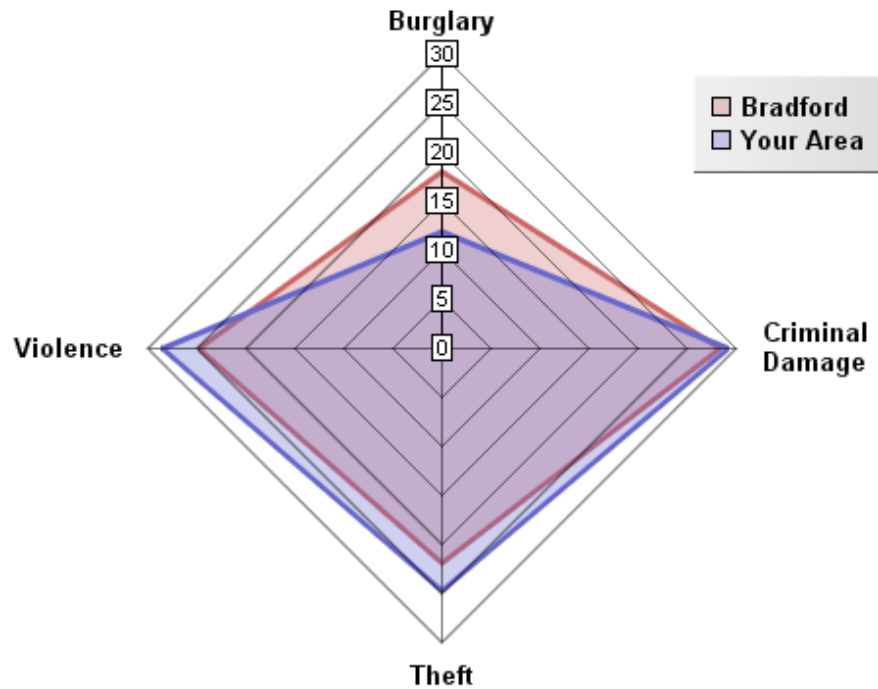


Overall Crimes per Year

Year	Selected Area			Bradford District		
	No.Offences	Change	% Change	No.Offences	Change	% Change
2002/03	1,605			49,264		
2003/04	1,428	-177	-11.0%	48,973	-291	-0.6%
2004/05	1,395	-33	-2.3%	40,747	-8226	-16.8%
2005/06	1,592	+197	+14.1%	43,562	+2815	+6.9%

The pattern of crime in the Manningham Ward has broadly followed a similar trend to the district. In 2004/05 numerous district wide initiatives from West Yorkshire Police and the District Crime and Disorder Reduction Partnership yielded significant reductions in crime across most categories. This was an exceptional year for crime reduction and such significant reductions have proven to be unsustainable in the following years. There has still been a 1% decrease in crime between 2002 and 2006. It is important to note that ID2004 Crime Domain definition of crime is limited to a subset of crime. A more accurate picture can be obtained by looking at Overall Crime Levels in the district.

05/06 Comparison with District (Rate per 1000 population)

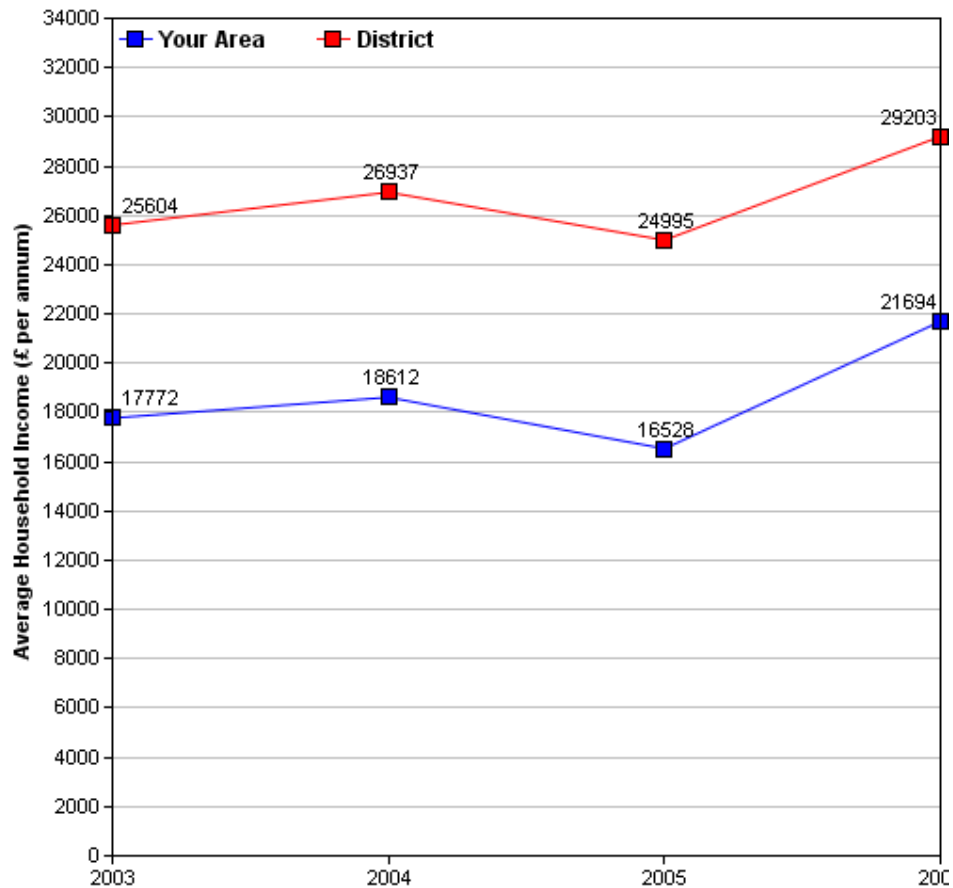


The above crime radar graph compares four variables of crime, per thousand population for your area, with that of the Bradford district. The pink line indicates the Bradford District rate per thousand population and the blue line represents the per thousand population rate for your area. The radar graph allows us to see that only one crime variable (Burglary) in your area is below that of the district average. The radar graph also allows you to see which crime variables are closer or further from the district rate, by comparing the gap between the blue and pink lines. Criminal Damage in Manningham is similar to the district average and Violence and Theft are higher. Theft and Violence are higher in your area than the Bradford District, this may well reflect the urban characteristic and high levels of deprivation in the Manningham ward.

Income

Information relating to income is derived from data supplied by CACI called 'PayCheck', which provides estimates of mean household income for every postcode in the UK. Unfortunately, it is not possible to use PayCheck data to examine changes in income over time, due to changes in data collection methods. However, it is possible to compare figures from different geographic areas (i.e. Ward and District) for the same time period, as they are derived using the same data collection method.

(For more information on PayCheck data please see www.caci.co.uk.)



Overall Income by Year

	2003	2004	2005	2006
Mean per Annum	£17,772.20	£18,611.69	£16,527.67	£21,693.89
Mean per Annum (District)	£25,604.05	£26,936.70	£24,995.30	£29,203.12

Ethnic Diversity

This data come from the 1991 and 2001 Censuses and shows the diversity of ethnic groups within the Bradford District. By comparing the 1991 Census with the 2001 Census we are able to compare the area over time. The Manningham ward has become less diverse. This appears to be because there has been an increase in the percentage of Asians; from 61.5% (1991) to 72.1% (2001) and a decrease of Whites; from 31.9% (1991) to 21% (2001).

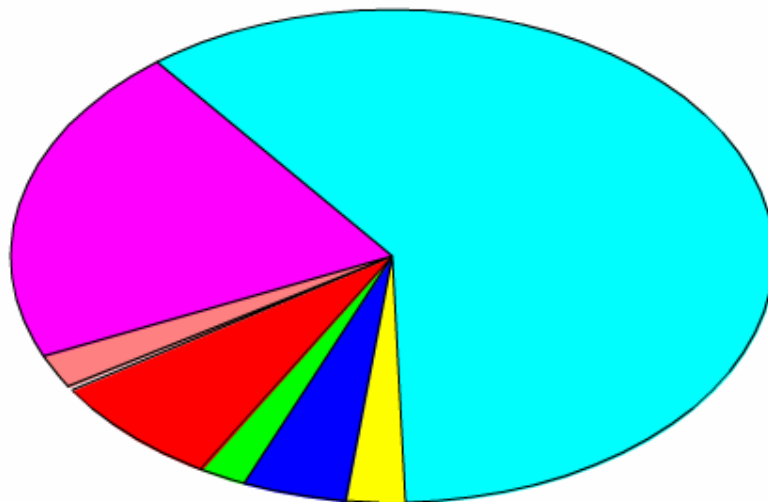
Ethnic Diversity 1991

	Number	Percentage
White	5,349	31.9%
Asian	10,320	61.5%
Black	578	3.4%
Other	539	3.2%

Ethnic Diversity 2001

	Number	Percentage
White	3,538	21%
Mixed	430	2.0%
Asian	12,149	72.1%
Black	340	2%
Other	382	2.3%

■ Bangladeshi	1,259(7%)
■ Black or Black British	339(2%)
■ Indian	771(5%)
■ Mixed(1)	429(3%)
■ Pakistani	10,117(60%)
■ White	3,537(21%)
■ Other ethnic group	382(2%)



Travel to Work (Census 2001)

This data comes from the 2001 Census. It has details about the people who travel to and from the area to go to work and their method of getting there.

Travel from Manningham

Totals

Total People travelling from Area	Distance Travelled (in Km)					
	Average (mean)	Maximum	Standard Deviation	Standard Deviation (of the population)	Variance	Variance (of the population)
3,583	7	329	22	22	467,903	467,843
Method of travel to work						
Works mainly at or from home	Public Transport			Bicycle	On Foot	Other
	Train	Bus etc	Taxi			
315	87	580	45	33	620	9
By Car				Motorcycle etc		
As driver		As passenger				
1,528		352		3		

By Local Authority

Destination Local Authority	Total People travelling from Area	Distance Travelled (in Km)	
		Average (mean)	Maximum
Bradford	2900	2	17
Leeds	347	13	26
Kirklees	93	14	24
Calderdale	42	12	18
Wakefield	37	29	35
Craven	21	23	44
Harrogate	15	29	40
Sheffield	10	51	52
St. Helens	6	75	75
Hambleton	6	50	55
Birmingham	6	144	148
North West Leicestershire	6	117	118
Bury	6	46	46
Barnsley	6	41	43
York	6	49	49

Travel to Manningham

Totals

Total People travelling to Area	Distance Travelled (in Km)					
	Average (mean)	Maximum	Standard Deviation	Standard Deviation (of the population)	Variance	Variance (of the population)
8,141	8	416	18	18	319,843	319,830
Method of travel to work						
Works mainly at or from home	Public Transport			Bicycle	On Foot	Other
	Train	Bus etc	Taxi			
315	128	1142	58	72	665	16
By Car				Motorcycle etc		
As driver		As passenger				
4,935		762		45		

By Local Authority

Origin Local Authority	Total People travelling from Area	Distance Travelled (in Km)	
		Average (mean)	Maximum
Bradford	6,395	4	19
Leeds	685	11	30
Kirklees	334	14	26
Calderdale	262	12	19
Wakefield	79	26	39
Harrogate	65	29	43
Craven	60	26	60
York	23	51	55
Doncaster	21	53	57
Pendle	17	28	31
Rotherham	16	50	62
Ryedale	11	69	75
Sheffield	11	48	53
Barnsley	10	36	39
Coventry	10	151	151

Of the people who travel to work from Manningham, over 52.5% travel by car (42.6% as drivers and 9.8% as passengers), 8.4% by motorcycle and 0.4% travel by other means (including train, buses, taxis, bicycle, on foot and other modes). The remaining 8.8% work predominantly from home.

Over 56% more people travel to Manningham than those that travel from Manningham.

Of the people who travel to work in Manningham, over 70% travel by car (60.6% as drivers and 9.4% as passengers), 0.6% by motorcycle and 25.6% travel by other means (including train, buses, taxis, bicycle, on foot and other modes). The remaining 3.9% work predominantly from home.

Indices of Deprivation 2004 (ID2004)

The Index of Multiple Deprivation 2004 (IMD 2004) is a Super Output Area (SOA) level measure of multiple deprivation. England is divided into 32,482 SOAs, which are small areas containing an average of 1,500 residents. The IMD 2004 project gives a score and rank to each SOA for seven areas of deprivation:

- Income deprivation
- Employment deprivation
- Health deprivation and disability
- Education, skills and training deprivation
- Barriers to Housing and Services
- Living environment deprivation
- Crime

Also, each SOA has been given an overall score and rank which takes into account all seven indices, and this is known as the Index of Multiple Deprivation 2004.

Ranks vary from 1 to 32,482, with 1 being the most deprived. Higher scores indicate that areas are more deprived. When comparing the deprivation of different areas, it is better to look at the rank than the score. Bradford Council has been able to use the Maps and Stats web-based GIS system (www.mapsandstats.com) to combine scores for the SOAs that fall within the wards, and hence estimate the Indices of Deprivation at ward level.

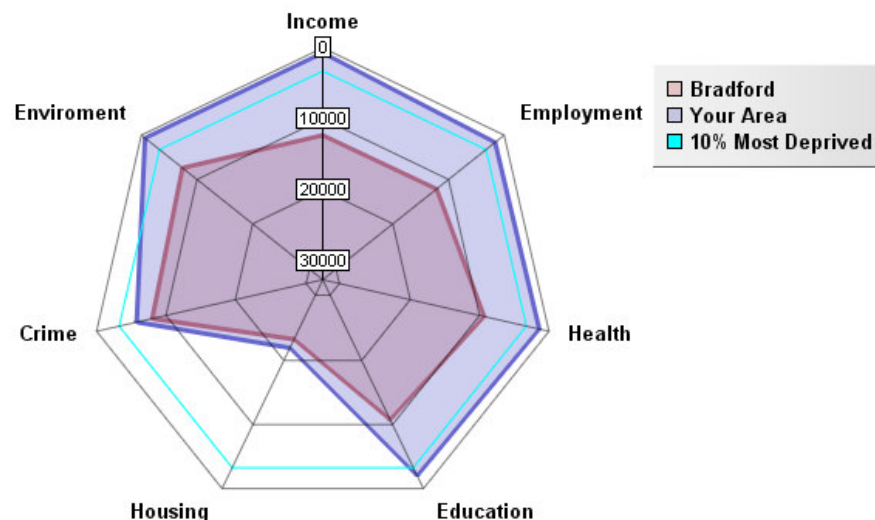
Index of Multiple Deprivation 2004

	ID 2004 Overall Rank (Average)	ID 2004 Overall Score
E01008106 in Sheffield LA	755	62.09
Manningham Ward	755.57	64.96
E01005385 in Oldham LA	756	62.07
Average for Bradford	10656.03	32.93

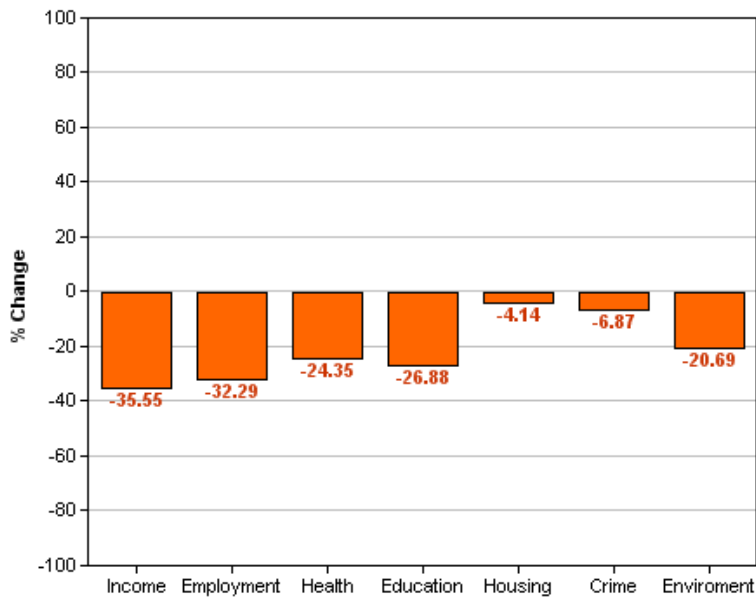
This table shows the average ranks and scores for the Manningham ward. The rows above and below Manningham show which SOAs in England have the most similar ranks to this ward, and are therefore considered to have the most similar levels of deprivation. It is important to note, however, that these areas may be deprived for different reasons.

Area Rank against Average Bradford Rank

The below radar graph and bar chart indicate deprivation scores for your area compared to the Bradford District average. On all measures Manningham is considered more deprived when compared to the Bradford District average, in fact much of the ward would be considered to be in the 2% most deprived for Income and Education for the country. The Housing Domain score is nearest to that of the Bradford District average score for your area. This indicates that for Housing, your area is only slightly above that of the district average. However, all other indices for your area, except crime and Housing, fall well within the 10% most deprived. Income (-35.5) and Employment (-32.2) have the lowest scores and the highest gap between the district average and that of the ward.



Percentage Difference between Area Rank and Average Bradford Rank



Other dataset currently being investigated / acquired:

Health

Low birth weight
 Death Rates
 Smoking attributable health admissions
 Perception Surveys (Speak-out)

Education

%5 A – C GCSE's (Inc. Maths and English)
 Key Stage Results
 Adult qualifications
 Truancy

Economy

Benefit measures & Incapacity benefit
 Income levels (Household)
 NEET's
 Business start-up survival rates

Crime

Criminal damage
 Burglary
 ASB (Needs clarifying)
 Youth offending
 Road traffic accidents (RTA)


Liveability

House prices
 Void properties
 Cleanliness
 Open spaces
 Housing condition

Stronger Communities

Voting rates

Plus many other council datasets as they become available through the GIS strategy.

	<p>All 30 Ward profiles and supplements can be found at: http://www.bradfordinfo.com/census/WardProfiles.cfm</p> <p>This bulletin was produced by the Research and Consultation Service, City of Bradford Metropolitan District Council. Email: stephen.elves@bradford.gov.uk Tel: 01274 43 7269 August 2007</p>
---	--