

## Queensbury Ward Profile Supplement

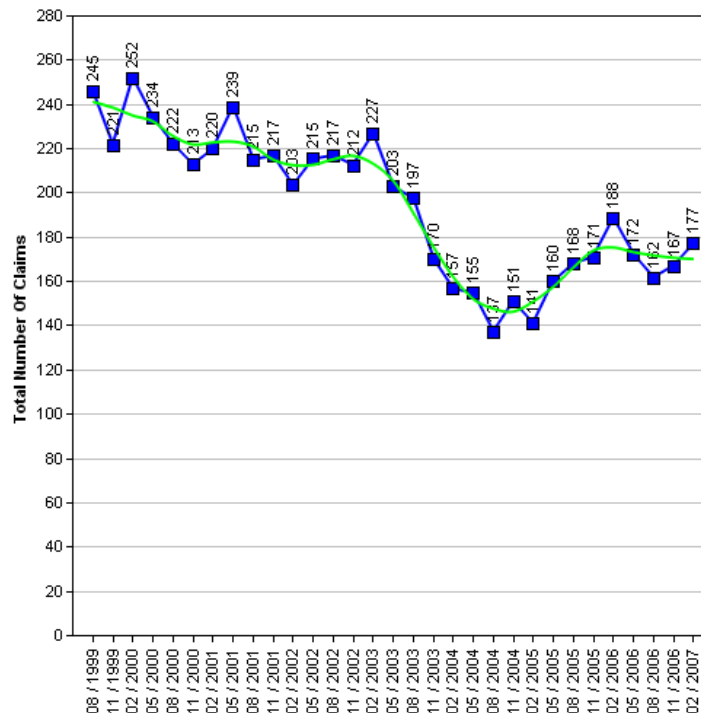
The Census is a survey of all people and households in the country that takes place every 10 years. The Census was last carried out in 2001, with results published in 2003. The next Census is due in 2010, with results expected in 2013. Consequently the actual data cannot be updated in intervening years.

Work has been underway for some time to produce a range of alternative datasets for Bradford to supplement the 2001 Census data with more current and relevant information, which will better describe conditions and progress across the District. This supplement provides a taster of that work.

It is the intention to consult Elected Members on themes and priorities. Regular data updates will then be incorporated into the intranet 'Members Information System' supported by improved analysis and narrative. Periodic snapshots in paper document form will continue to be available.

### Job Seekers Allowance

The 1991 to 2006 Job Seekers Allowance data give an insight into the number of claimants under pensionable age who are available for, and actively seeking work of at least 40 hours a week.



### Job Seekers Allowance Claimants

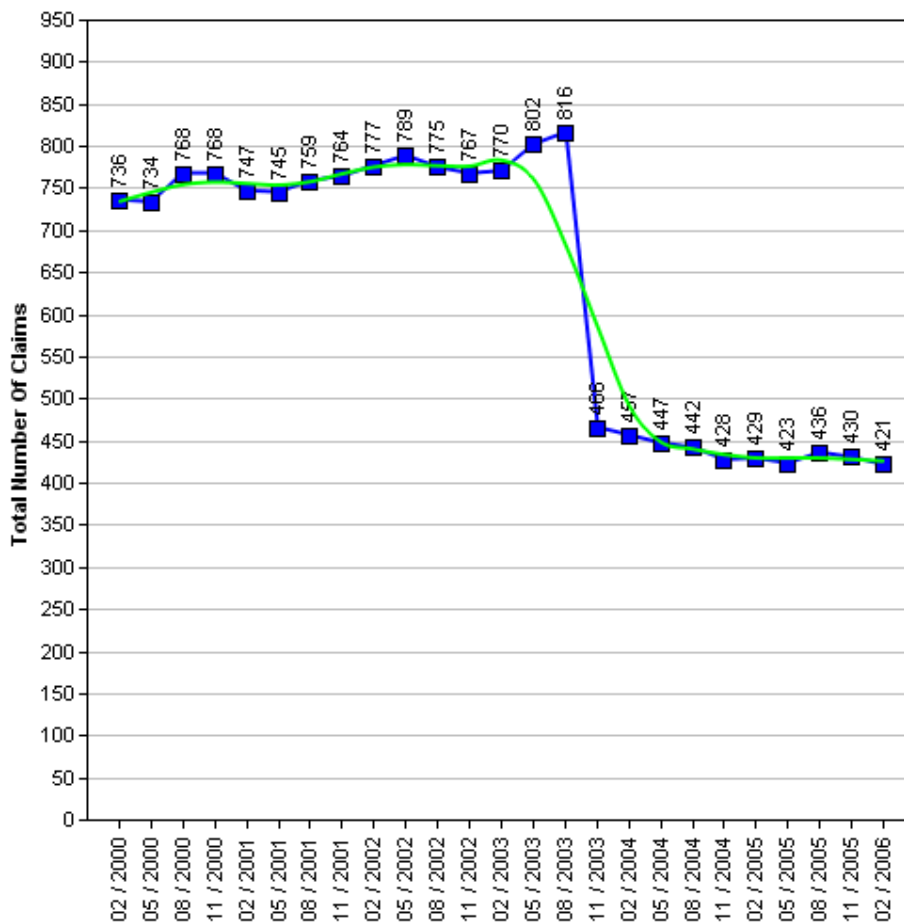
	1999	2000	2001	2002	2003	2004	2005	2006	2007
Quarter 1 (February)	-	252	220	203	227	157	141	188	177
Quarter 2 (May)	-	234	239	215	203	155	160	172	-
Quarter 3 (August)	245	222	215	217	197	137	168	162	-
Quarter 4 (November)	221	213	217	212	170	151	171	167	-



## Income Support

The 2000 to 2006 Income Support data give an insight into the number of claimants between the age of 16-59 who have a low income, don't have savings of £16,000 or more, are not working, work on average less than 16 hours a week, or are unable to work because they are:

- A Lone parent
- Registered sick or disabled
- A student and either a lone parent or disabled
- Or caring for someone who is sick or elderly



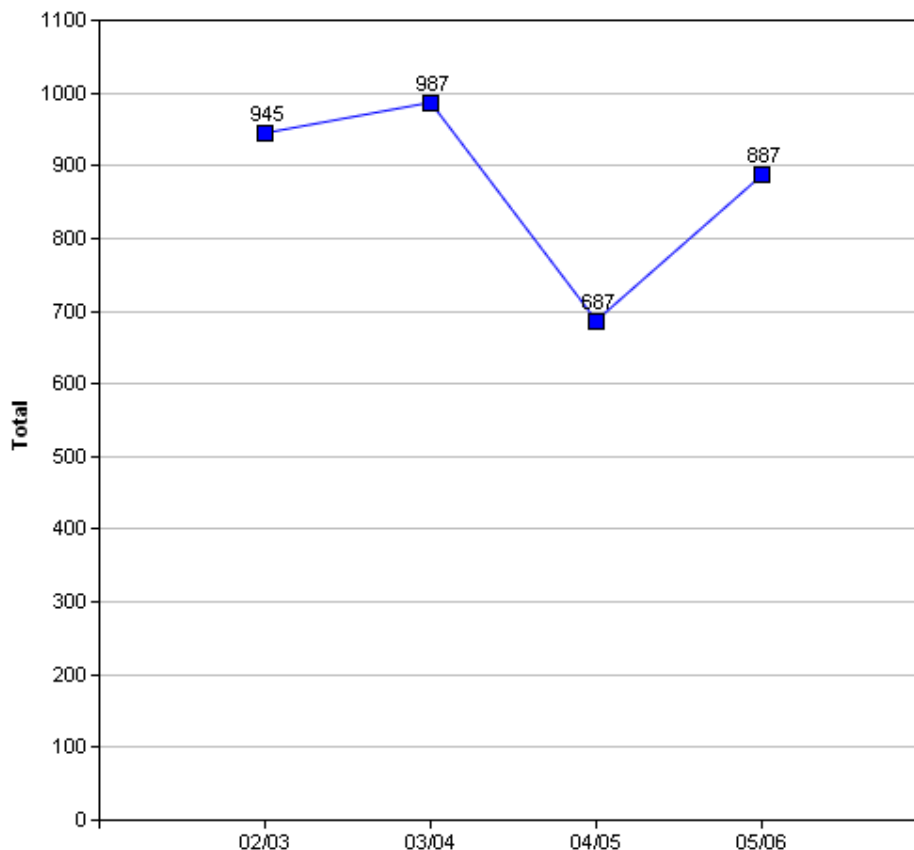
**WARNING:** In the Income Support table there is a drop in the number of claimants between the months of August 2003 and November 2003. The explanation for this is because "from October 2003, Income Support for pensioners was replaced by 'Pension Credit'." (Source: [www.mind.org.uk](http://www.mind.org.uk)).

### Income Support Claimants

	2000	2001	2002	2003	2004	2005	2006
Quarter 1 (February)	-	747	777	770	457	429	421
Quarter 2 (May)	736	745	789	802	447	423	-
Quarter 3 (August)	734	759	775	816	442	436	-
Quarter 4 (November)	768	764	767	466	428	430	-

## Crime

The Crime data is based on the Crime Domain from the Indices of Deprivation 2004. The Crime Domain consists of 33 categories of recorded crime which are then grouped to form 4 composite indicators: burglary, criminal damage, theft and violence. This report gives an insight into the number of offences committed within the selected area and compares this with the Bradford district. The data is displayed for each year by composite indicator.

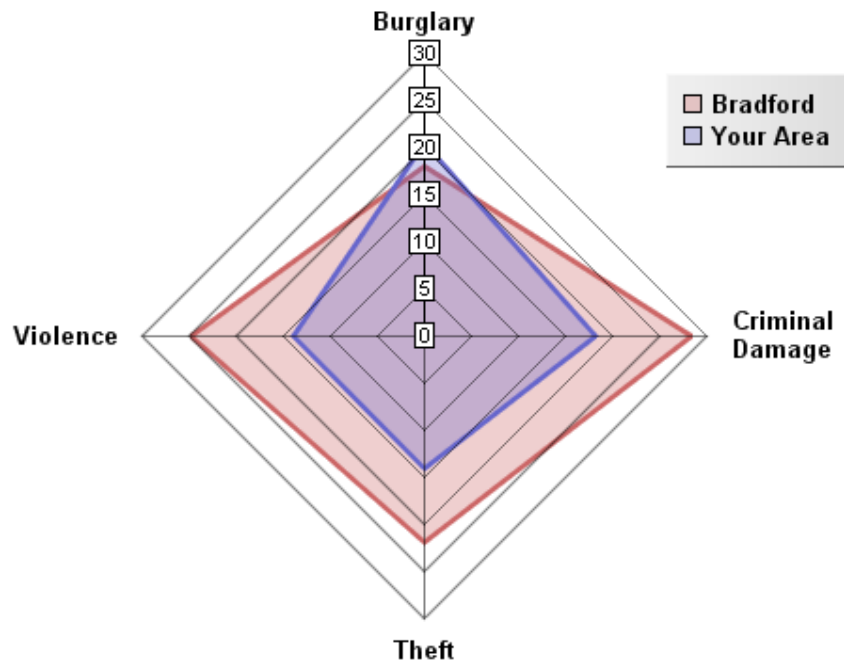


### Overall Crimes per Year

Year	Selected Area			Bradford District		
	No.Offences	Change	% Change	No.Offences	Change	% Change
2002/03	945			49,264		
2003/04	987	+42	+4.4%	48,973	-291	-0.6%
2004/05	687	-300	-30.4%	40,747	-8,226	-16.8%
2005/06	887	+200	+29.1%	43,562	+2,815	+6.9%

The pattern of crime in the Queensbury Ward has broadly followed a similar trend to the district. In 2004/05 numerous district wide initiatives from West Yorkshire Police and the District Crime and Disorder Reduction Partnership yielded significant reductions in crime across most categories. This was an exceptional year for crime reduction and such significant reductions have proven to be unsustainable in the following years. There has still been a 6.1% decrease in crime between 2002 and 2006. It is important to note that ID2004 Crime Domain definition of crime is limited to a subset of crime. A more accurate picture can be obtained by looking at Overall Crime Levels in the district.

### 05/06 Comparison with District (Rate per 1000 population)

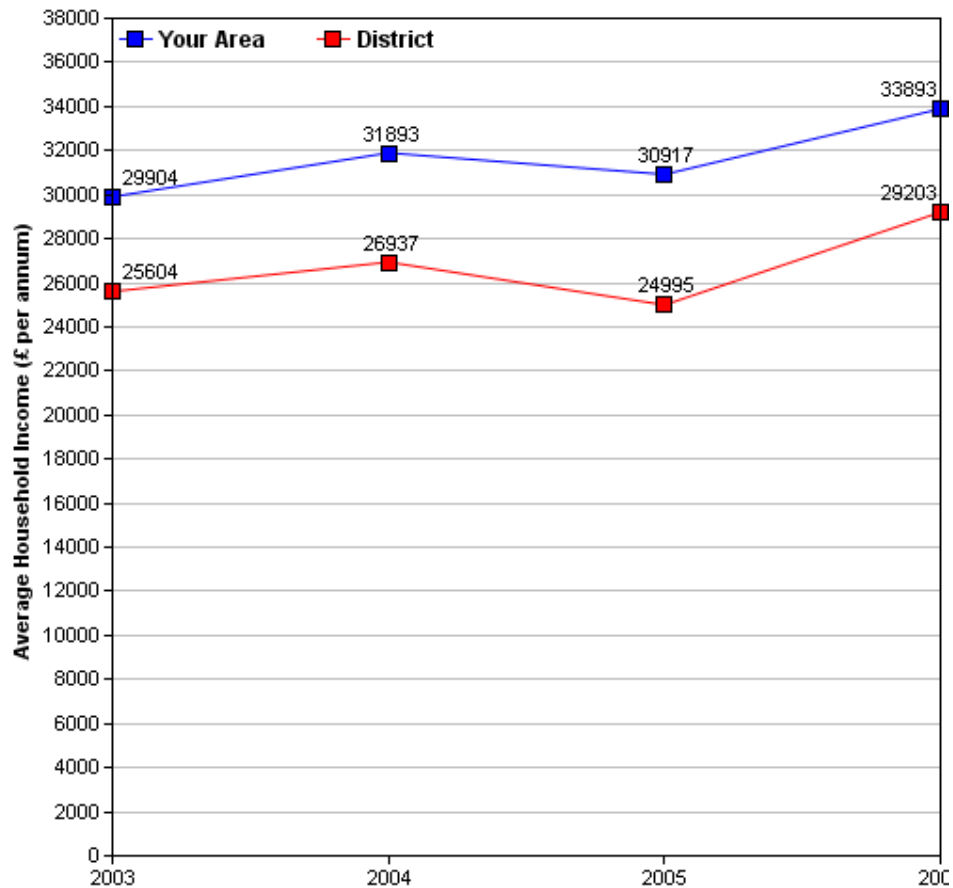


The above crime radar graph compares four variables of crime, per thousand population for your area, with that of the Bradford district. The pink line indicates the Bradford District rate per thousand population and the blue line represents the rate for your area. The radar graph allows us to see that Theft, Violence and Criminal Damage variables in your area are well below those of the district average. The radar graph also allows you to see which crime variables are closer or further from the district rate, by comparing the gap between the blue and pink lines. Burglary is closest to the district average rate for your area as the gap between the pink and blue lines are shortest for this variable. The crime levels may well reflect the semi-rural characteristic and low deprivation levels experienced by this area.

## Income

Information relating to income is derived from data supplied by CACI called 'PayCheck', which provides estimates of mean household income for every postcode in the UK. Unfortunately, it is not possible to use PayCheck data to examine changes in income over time, due to changes in data collection methods. However, it is possible to compare figures from different geographic areas (i.e. Ward and District) for the same time period, as they are derived using the same data collection method.

(For more information on PayCheck data please see [www.caci.co.uk](http://www.caci.co.uk).)



### Overall Income by Year

	2003	2004	2005	2006
Mean per Annum	£29,904.02	£31,892.95	£30,917.20	£33,892.66
Mean per Annum (District)	£25,604.05	£26,936.70	£24,995.30	£29,203.12

## Ethnic Diversity

This data comes from the 1991 and 2001 Censuses and shows the diversity of ethnic groups within the Bradford District. By comparing the 1991 Census with the 2001 Census we are able to compare the area over time. The figures suggest that Queensbury became slightly more diverse between 1991 and 2001.

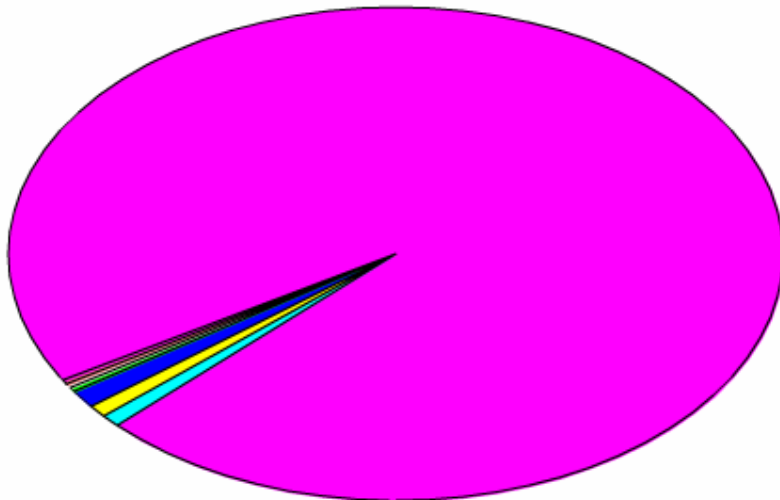
### Ethnic Diversity 1991

	Number	Percentage
White	11,895	98.9%
Asian	70	0.6%
Black	27	0.2%
Other	39	0.3%

### Ethnic Diversity 2001

	Number	Percentage
White	12,824	96.3%
Mixed	119	0.9%
Asian	272	2%
Black	52	0.4%
Other	45	0.3%

■ Bangladeshi	7(0%)
■ Black or Black British	52(0%)
■ Indian	150(1%)
■ Mixed(1)	119(1%)
■ Pakistani	114(1%)
■ White	12,823(96%)
■ Other ethnic group	45(0%)



## Travel to Work (Census 2001)

This data comes from the 2001 Census. It has details about the people who travel to and from the area to go to work and their method of getting there.

### Travel from Queensbury

#### Totals

Total People travelling from Area	Distance Travelled (in Km)					
	Average (mean)	Maximum	Standard Deviation	Standard Deviation (of the population)	Variance	Variance (of the population)
6,883	9	362	25	25	606,968	606,929
<b>Method of travel to work</b>						
Works mainly at or from home	Public Transport			Bicycle	On Foot	Other
	Train	Bus etc	Taxi			
557	45	882	21	23	361	6
<b>By Car</b>				<b>Motorcycle etc</b>		
<b>As driver</b>		<b>As passenger</b>				
4,311		577		94		

#### By Local Authority

Destination Local Authority	Total People travelling from Area	Distance Travelled (in Km)	
		Average (mean)	Maximum
Bradford	4961	5	18
Calderdale	853	6	17
Leeds	544	17	39
Kirklees	238	13	22
Wakefield	68	25	35
Craven	15	20	25
Rotherham	15	50	55
Harrogate	12	36	47
Hambleton	9	64	68
Doncaster	9	56	60
Sheffield	9	51	54
North Lincolnshire	9	81	81
Rochdale	9	26	28
Salford	8	43	45
Bury	6	38	39

## Travel to Queensbury

### Totals

Total People travelling to Area	Distance Travelled (in Km)					
	Average (mean)	Maximum	Standard Deviation	Standard Deviation (of the population)	Variance	Variance (of the population)
2,609	5	201	12	12	142,200	142,178
<b>Method of travel to work</b>						
Works mainly at or from home	Public Transport			Bicycle	On Foot	Other
	Train	Bus etc	Taxi			
557	15	147	12	15	252	4
By Car				Motorcycle etc		
As driver	As passenger					
1,409	184			15		

### By Local Authority

Origin Local Authority	Total People travelling from Area	Distance Travelled (in Km)	
		Average (mean)	Maximum
Bradford	2,047	2	19
Calderdale	315	6	17
Kirklees	87	13	22
Leeds	76	16	36
Wakefield	27	31	40
Craven	12	30	59
Rotherham	9	48	52
Oldham	8	27	29
Doncaster	6	50	53
Ribble Valley	3	38	38
Pendle	3	23	23
Milton Keynes	3	201	201
Burnley	3	30	30
Wigan	3	60	60
Barnsley	3	29	29

Of the people who travel to work from Queensbury, over 71% travel by car (62.6% as drivers and 8.4% as passengers), 1.4% by motorcycle and 0.2% travel by other means (including train, buses, taxis, bicycle, on foot and other modes). The remaining 8.1% work predominantly from home.

Over 62% more people travel from Queensbury than those that travel to Queensbury.

Of the people who travel to work in Queensbury, over 61.1% travel by car (54% as drivers and 7% as passengers), 0.6% by motorcycle and 17.1% travel by other means (including train, buses, taxis, bicycle, on foot and other modes). The remaining 21.4% work predominantly from home.

## Indices of Deprivation 2004 (ID2004)

The Index of Multiple Deprivation 2004 (IMD 2004) is a Super Output Area (SOA) level measure of multiple deprivation. England is divided into 32,482 SOAs, which are small areas containing an average of 1,500 residents. The IMD 2004 project gives a score and rank to each SOA for seven areas of deprivation:

- Income deprivation
- Employment deprivation
- Health deprivation and disability
- Education, skills and training deprivation
- Barriers to Housing and Services
- Living environment deprivation
- Crime

Also, each SOA has been given an overall score and rank which takes into account all seven indices, and this is known as the Index of Multiple Deprivation 2004.

Ranks vary from 1 to 32,482, with 1 being the most deprived. Higher scores indicate that areas are more deprived. When comparing the deprivation of different areas, it is better to look at the rank than the score. Bradford Council has been able to use the Maps and Stats web-based GIS system ([www.mapsandstats.com](http://www.mapsandstats.com)) to combine scores for the SOAs that fall within the wards, and hence estimate the Indices of Deprivation at ward level.

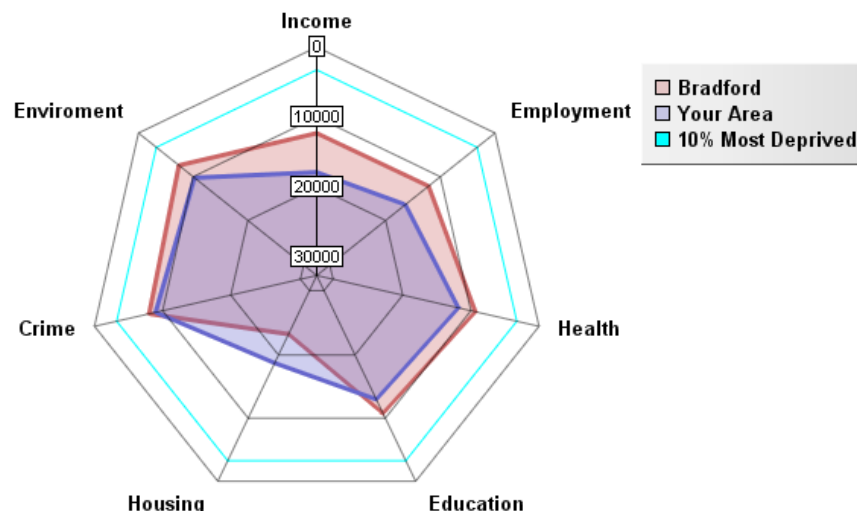
### Index of Multiple Deprivation 2004

	ID 2004 Overall Rank (Average)	ID 2004 Overall Score
E01008951 in Birmingham LA	14373	19.33
<b>Queensbury Ward</b>	<b>14373.35</b>	<b>21.28</b>
E01007623 in Doncaster LA	14374	19.33
<b>Average for Bradford</b>	<b>10656.03</b>	<b>32.93</b>

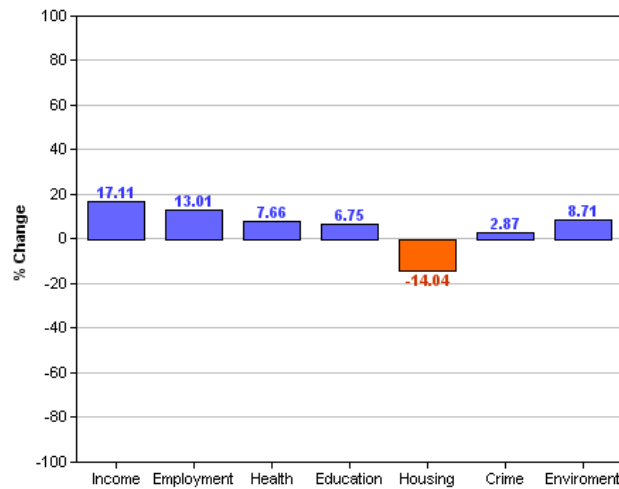
This table shows the average ranks and scores for the Queensbury ward. The rows above and below Queensbury show which SOAs in England have the most similar ranks to this ward, and are therefore considered to have the most similar levels of deprivation. It is important to note, however, that these areas may be deprived for different reasons.

### Area Rank against Average Bradford Rank

The following radar graph and bar chart for Queensbury indicate a slightly lower level of deprivation than the district average for the Environment, Employment, Health and Education domains. It is significantly less deprived in the Income domain (see the income data above for evidence of this), is close to average in the Crime Domain and is considered quite deprived compared to the district average in the Housing domain; this is almost certainly due to its relatively rural character, which is likely to mean that GP's, supermarkets, etc. are comparatively further away from people's homes who live in the ward than compared with the bulk of the district's population. The greatest difference between the District average and your area is the Income domain (17.1). Overall, your area is less deprived on all domains, except Housing.



## Percentage Difference between Area Rank and Average Bradford Rank



### Other dataset currently being investigated/acquired

#### Health

Low birth weight  
 Death Rates  
 Smoking attributable health admissions  
 Perception Surveys (Speak-out)

#### Education

%5 A – C GCSE's (Inc. Maths and English)  
 Key Stage Results  
 Adult qualifications  
 Truancy

#### Economy

Benefit measures & Incapacity benefit  
 Income levels (Household)  
 NEET's  
 Business start-up survival rates

#### Crime

Criminal damage  
 Burglary  
 ASB (Needs clarifying)  
 Youth offending  
 Road traffic accidents (RTA)


#### Liveability

House prices  
 Void properties  
 Cleanliness  
 Open spaces  
 Housing condition

#### Stronger Communities

Voting rates

**Plus many other council datasets as they become available through the GIS strategy.**

	<p>All 30 Ward profiles and supplements can be found at:  <a href="http://www.bradfordinfo.com/census/WardProfiles.cfm">http://www.bradfordinfo.com/census/WardProfiles.cfm</a></p> <p>This bulletin was produced by the <b>Research and Consultation Service</b>,              City of Bradford Metropolitan District Council.              Email: <a href="mailto:stephen.elves@bradford.gov.uk">stephen.elves@bradford.gov.uk</a> Tel: 01274 43 7269              August 2007</p>
---	--